

## Why use S J Smith Estate Agents?

### Here's some of our reviews to tell you why!

**Hours:** 8am–7pm Monday to Friday, 8am–5pm Saturday and 10am–2pm Sunday.

**Phone:** Ashford 01784 243 333 – Staines 01784 779 100

**Email:** [ashford@sjsmithestateagents.co.uk](mailto:ashford@sjsmithestateagents.co.uk) - [staines@sjsmithestateagents.co.uk](mailto:staines@sjsmithestateagents.co.uk)



#### **Sajid Abbasi**

I have used SJSmith Estate agents for last 7 years, both as buyer and landlord. They always come across as professional, courteous, and understanding to customer's needs. I continue to use their services and have no complaints.



#### **Abigail P**

Our overall experience with s j smith has been great. Everyone we have dealt with has been brilliant and can't thank you enough especially Nicola who has kept us updated and constantly chased the chain for us after a difficult chain and original one falling through. Thank you!!



#### **Robert Boyce**

Great service from Amir and the team! We tried to sell through an online agent with no success.... We signed up with SJSmith and then 3 days later we had an offer! Highly recommend!



#### **Lincoln Williamson**

My partner and I recently bought our first home from S J Smith and from start to finish they were excellent. From arranging a viewing, to keeping us updated throughout the whole process and being able to answer all our questions and queries in a very timely manner. There was a number of difficulties with the sale, however Nicola went above and beyond in helping these difficulties get resolved, keep us in the loop, offer support and guidance and ensure that the sale happened as quick as possible. If not for Nicola, I honestly don't think the sale would have gone ahead! Thank-you Nicola and thank you S J Smith!



#### **Katie Jameson**

Great service, kept up to date throughout the whole process as the first time selling a home.



#### **Louise Cambray**

We bought and sold through SJ Smith and can't recommend them enough. Everyone at the office is great but we knew we were in safe hands with Louis from the off. He was so knowledgeable and took the time to listen to what was important to us. He was always available to talk things through and help solve any issues. Nothing was ever too much trouble, and he continually went over and above - genuinely a really nice guy! Nicola was also amazing, so efficient and made what was a very difficult process as painless as possible. We are very grateful to both of them for all of their help!



6 Station Approach  
Ashford  
Middlesex  
TW15 2QN

t: 01784 243333  
e: [ashford@sjsmithestateagents.co.uk](mailto:ashford@sjsmithestateagents.co.uk)  
[www.sjsmithestateagents.co.uk](http://www.sjsmithestateagents.co.uk)



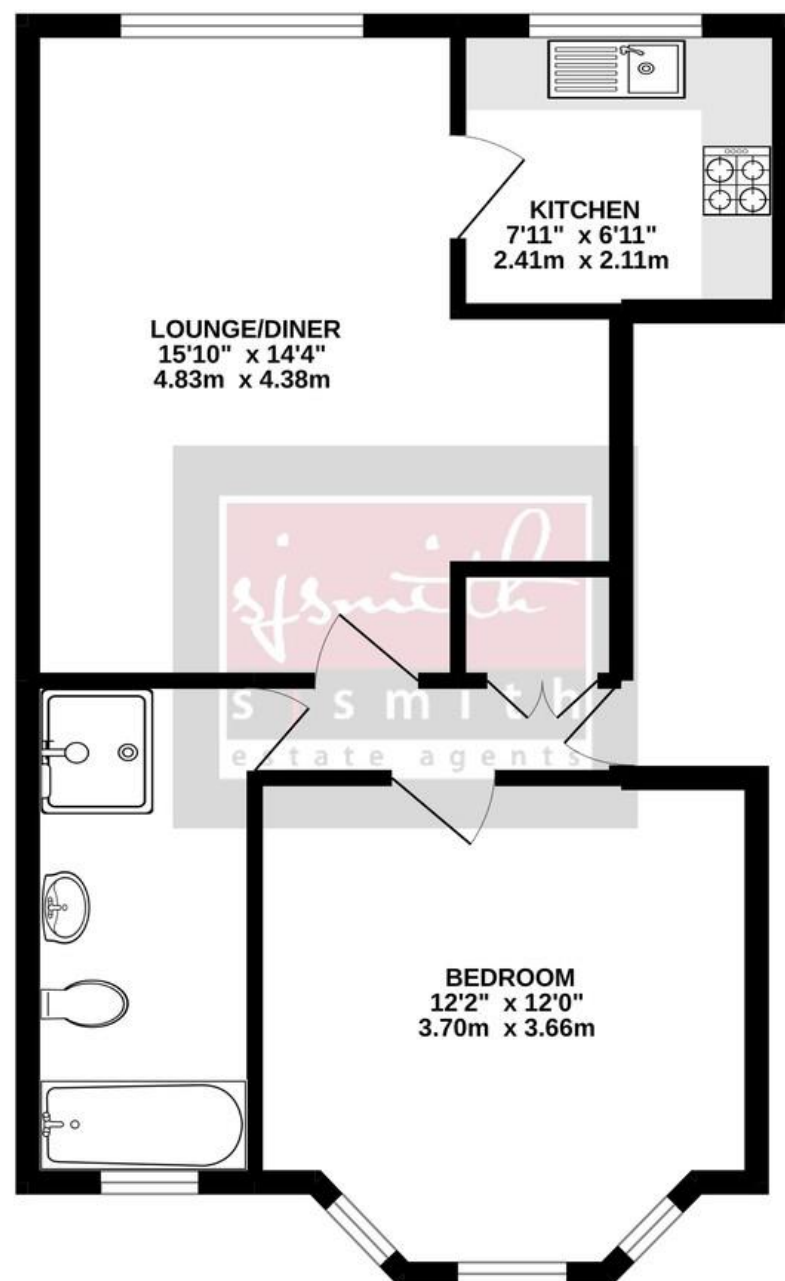
### **7 Ashcombe Close, Ashford, Surrey TW15 3GD** **£237,500 - Leasehold**

Set within this gated development just a short distance from the amenities of Ashford High Street including the main line station is this well presented, spacious, bright and airy first floor apartment with uninterrupted views out to the communal gardens and orchards from the main sitting room. Further benefits include allocated parking, long lease and no onward chain! The entrance hallway gives access to the main rooms and storage cupboard. The main bedroom sits immediately on your left-hand side as you enter the apartment, the bedroom is a particularly good size and benefits from adequate room for bedroom furnishings which include free standing wardrobes and a small desk and a large bay window giving ample light to the room. The main reception room is open plan with separate areas for sitting and dining, the dining area is defined by a small alcove which comfortably accommodates dining table and four chairs. The kitchen sits just off the lounge and has modern fitted work tops and units with integrated washing machine, cooker and gas hob. The bathroom boasts a four-piece white suite with separate shower cubicle and bath. The block is surrounded by well-maintained communal grounds and the flat further benefits from Double glazed windows and gas central heating.



- GATED DEVELOPMENT
- NO ONWARD CHAIN
- FIRST FLOOR APARTMENT
- MODERN KITCHEN
- FOUR PIECE BATHROOM
- EPC RATING C

GROUND FLOOR  
477 sq.ft. (44.3 sq.m.) approx.



TOTAL FLOOR AREA : 477 sq.ft. (44.3 sq.m.) approx.

Whilst every attempt has been made to ensure the accuracy of the floorplan contained here, measurements of doors, windows, rooms and any other items are approximate and no responsibility is taken for any error, omission or mis-statement. This plan is for illustrative purposes only and should be used as such by any prospective purchaser. The services, systems and appliances shown have not been tested and no guarantee as to their operability or efficiency can be given.  
Made with Metropix ©2022



### Council Tax

Spelthorne Borough Council, Tax Band C being £1,895.12 for 2022/23

Council tax bands can be reassessed by local authorities at any point, the council tax band is only taken at point of listing and should not be relied on as current banding

### Lease and service charge information, all to be confirmed via solicitors;

Tenure: Leasehold, years remaining TBC

Service Charge: TBC

Ground rent: TBC

**Agent note** Under Consumer Protection Regulations we have endeavoured to make these details as reliable and as accurate as possible. The accuracy is not guaranteed and does not form part of any contract as the details are prepared as a general guide. We have not carried out a detailed survey or tested any appliances, specific fittings, or services (gas/electric). Room sizes should not be relied upon for carpets or furnishing nor should internal photos as these are intended as a guide only and may have changed since. It should not be assumed that any furniture/fittings are included. Lease, ground rent, maintenance or any other charges have been provided by the vendor and their accuracy cannot be guaranteed. We always advise a buyer should obtain verification on points via a solicitor.