

Why use S J Smith Estate Agents? Here's some of our reviews to tell you why!

Hours: 8am–7pm Monday to Friday, 8am-5pm Saturday and 10am-2pm Sunday.

Phone: Ashford 01784 243 333 – Staines 01784 779 100

Email: ashford@sjsmithestateagents.co.uk - staines@sjsmithestateagents.co.uk



Sajid Abbasi

I have used SJSmith Estate agents for last 7 years, both as buyer and landlord. They always come across as professional, courteous, and understanding to customer's needs. I continue to use their services and have no complaints.



Abigail P

Our overall experience with s j smith has been great. Everyone we have dealt with has been brilliant and can't thank you enough especially Nicola who has kept us updated and constantly chased the chain for us after a difficult chain and original one falling through. Thank you!!



Robert Boyce

Great service from Amir and the team! We tried to sell through an online agent with no success.... We signed up with SJSmith and then 3 days later we had an offer! Highly recommend!



Lincoln Williamson

My partner and I recently bought our first home from S J Smith and from start to finish they were excellent. From arranging a viewing, to keeping us updated throughout the whole process and being able to answer all our questions and queries in a very timely manner. There was a number of difficulties with the sale, however Nicola went above and beyond in helping these difficulties get resolved, keep us in the loop, offer support and guidance and ensure that the sale happened as quick as possible. If not for Nicola, I honestly don't think the sale would have gone ahead! Thank-you Nicola and thank you S J Smith!



Katie Jameson

Great service, kept up to date throughout the whole process as the first time selling a home.



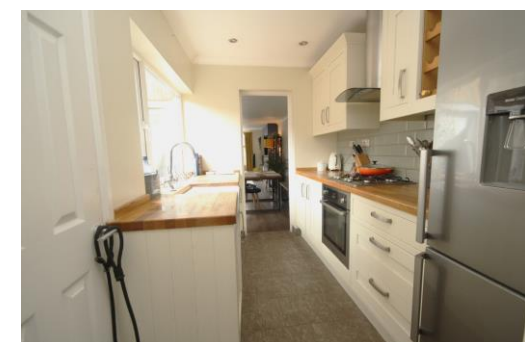
Louise Cambray

We bought and sold through SJ Smith and can't recommend them enough. Everyone at the office is great but we knew we were in safe hands with Louis from the off. He was so knowledgeable and took the time to listen to what was important to us. He was always available to talk things through and help solve any issues. Nothing was ever too much trouble, and he continually went over and above - genuinely a really nice guy! Nicola was also amazing, so efficient and made what was a very difficult process as painless as possible. We are very grateful to both of them for all of their help!



10A Clarence Street
Staines Upon Thames
Middlesex
TW18 4SP

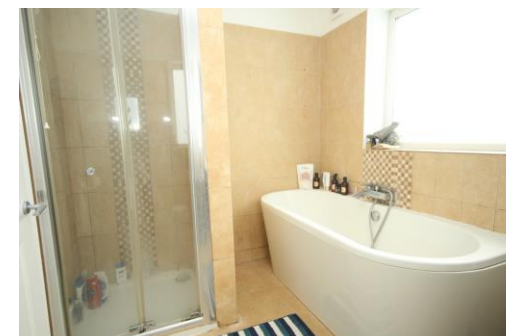
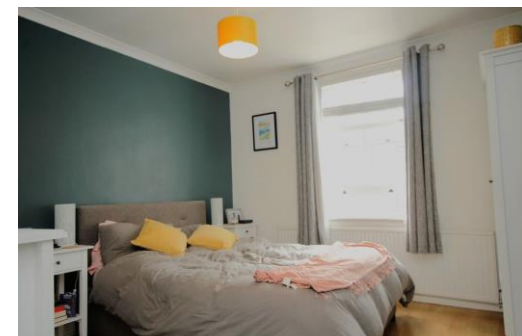
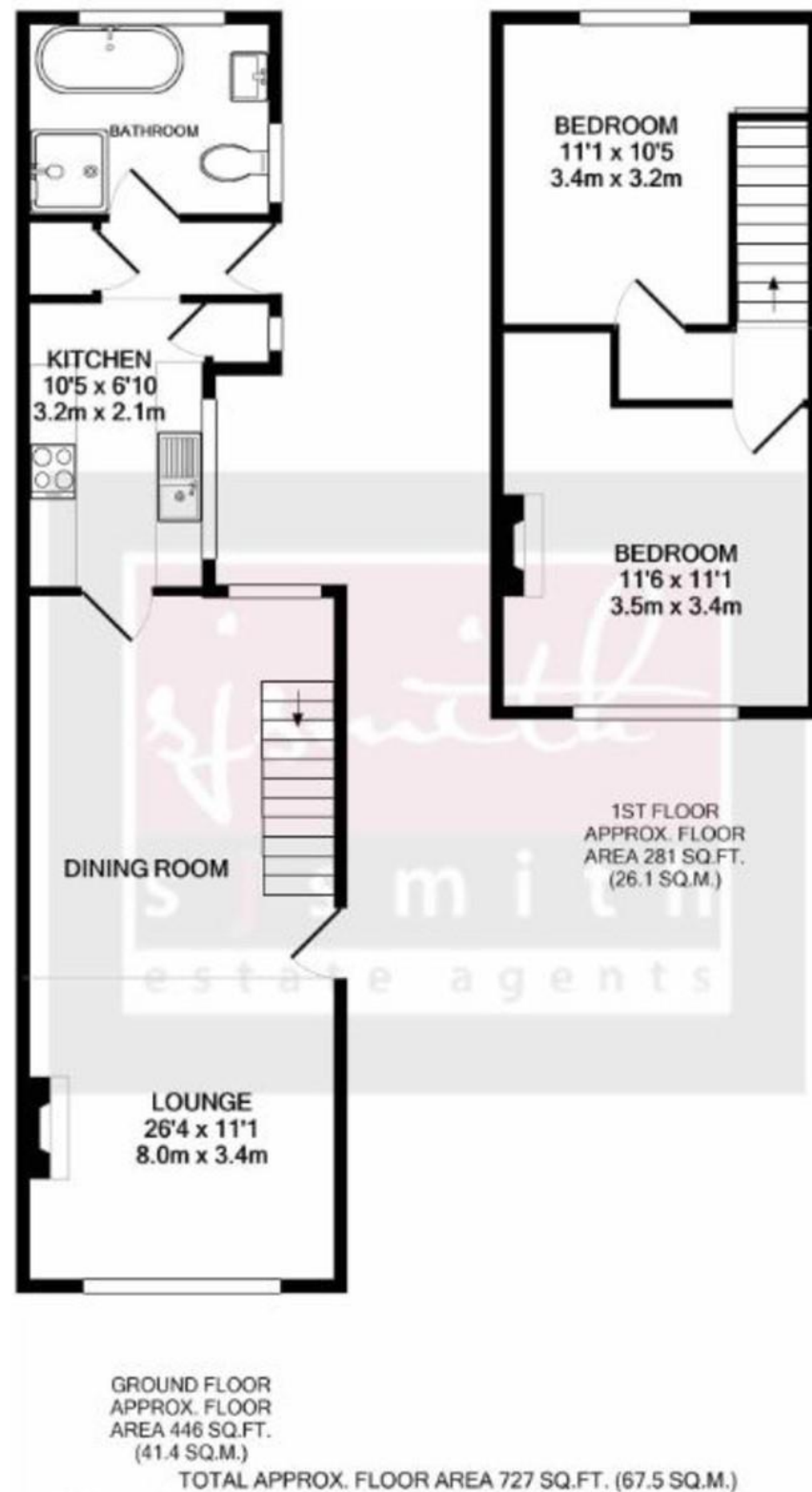
t: 01784 779 100
e: staines@sjsmithestateagents.co.uk
www.sjsmithestateagents.co.uk



69 Hythe Road, Staines-upon-Thames, Surrey , TW18 3EE
Offers Over £400,000 - Freehold

CHARMING TWO DOUBLE BEDROOM VICTORIAN COTTAGE! This stunning period property would be an ideal starter home. The semi-detached home offers an open plan reception space with both front and back aspects allowing ample light. The stylish kitchen is set to the rear of the property which includes integrated gas hob and oven, butler sink and two pantry/storage cupboards. There is also a four-piece family bathroom which is on the ground floor. To the first floor you will find two double bedrooms offering ample light and access to the loft from master bedroom. The current owners have planning permission granted for a loft conversion which can be found online using RU.19/1780 this is granted until January 2023. Additional features include a spacious rear garden with new fence panels and side access as well as potential to extend (STPP). The property is situated with great access for Staines upon Thames, Egham and Motorway links.

- CHARMING VICTORIAN HOME
- OPEN PLAN RECEPTION ROOM
- BRIGHT AND AIRY THROUGHOUT
- MODERN KITCHEN
- TWO DOUBLE BEDROOMS
- EPC RATING TBC



Council Tax

Runnymede Borough Council, Tax Band c being £1868.01 for 2022/23

Council tax bands can be reassessed by local authorities at any point, the council tax band is only taken at point of listing and should not be relied on as current banding

Lease and service charge information, all to be confirmed via solicitors;

Tenure: Freehold

:

Agent note Under Consumer Protection Regulations we have endeavoured to make these details as reliable and as accurate as possible. The accuracy is not guaranteed and does not form part of any contract as the details are prepared as a general guide. We have not carried out a detailed survey or tested any appliances, specific fittings, or services (gas/electric). Room sizes should not be relied upon for carpets or furnishing nor should internal photos as these are intended as a guide only and may have changed since. It should not be assumed that any furniture/fittings are included. Lease, ground rent, maintenance or any other charges have been provided by the vendor and their accuracy cannot be guaranteed. We always advise a buyer should obtain verification on points via a solicitor.