

Why use S J Smith Estate Agents?

Here's some of our Google reviews to tell you why!

4.9 Stars! [Google review](#)

Hours: 8am-7pm Monday to Friday, 8am-5pm Saturday and 10am-2pm Sunday.

Phone: Ashford-01784 243 333 **Staines-**01784 779 100

Email: ashford@sjsmithestateagents.co.uk staines@sjsmithestateagents.co.uk



Ian Rozario
1 review



Top class team - Rob, Nicola and Chad were always on hand to ensure that the process moved forward as quickly as possible. Polite, courteous and trustworthy. Recommend highly if you are looking for a reputable Estate Agents.



Steve Widgery
1 review



An excellent service from valuation to completion. I felt under no pressure from Simon, who provided me with the valuation. We had a sensible and realistic conversation about the asking price and I appreciated the fact that he did not feel the need to enhance the asking price to gain my custom or pressure me into signing the contract, as one other agent did. I was informed about each and every viewing and always received feedback. Both Simon and Amir were a pleasure to speak to on every occasion and provided me with advice which proved valuable. Once I had accepted an offer, Nicola (the sales progression manager) was amazing. She was patient when I was not and helped with communication between all parties. I would recommend SJ Smith to anyone who is selling their property.



Katie Stevens
2 reviews



We used these guys to sell our property in ashford Middlesex. It wasn't exactly the most straight forward of sales but Louis dealt with everything, and reassured us the whole way through. IF we were ever to sell again, I would 100% choose SJ Smith to manage the sale. Massive thank you to Louis, Nicola, Chad and Rob



Chris Clark
1 review



SJ Smith were excellent, I would recommend them to anyone that would benefit from a great service. Amir was our dedicated agent and he went above and beyond in helping us sell our property and even assisted us in our purchase, that was over 100 miles away by communicating with the other estate agent we purchased from. Superb!



Sinthuja Cain
1 review



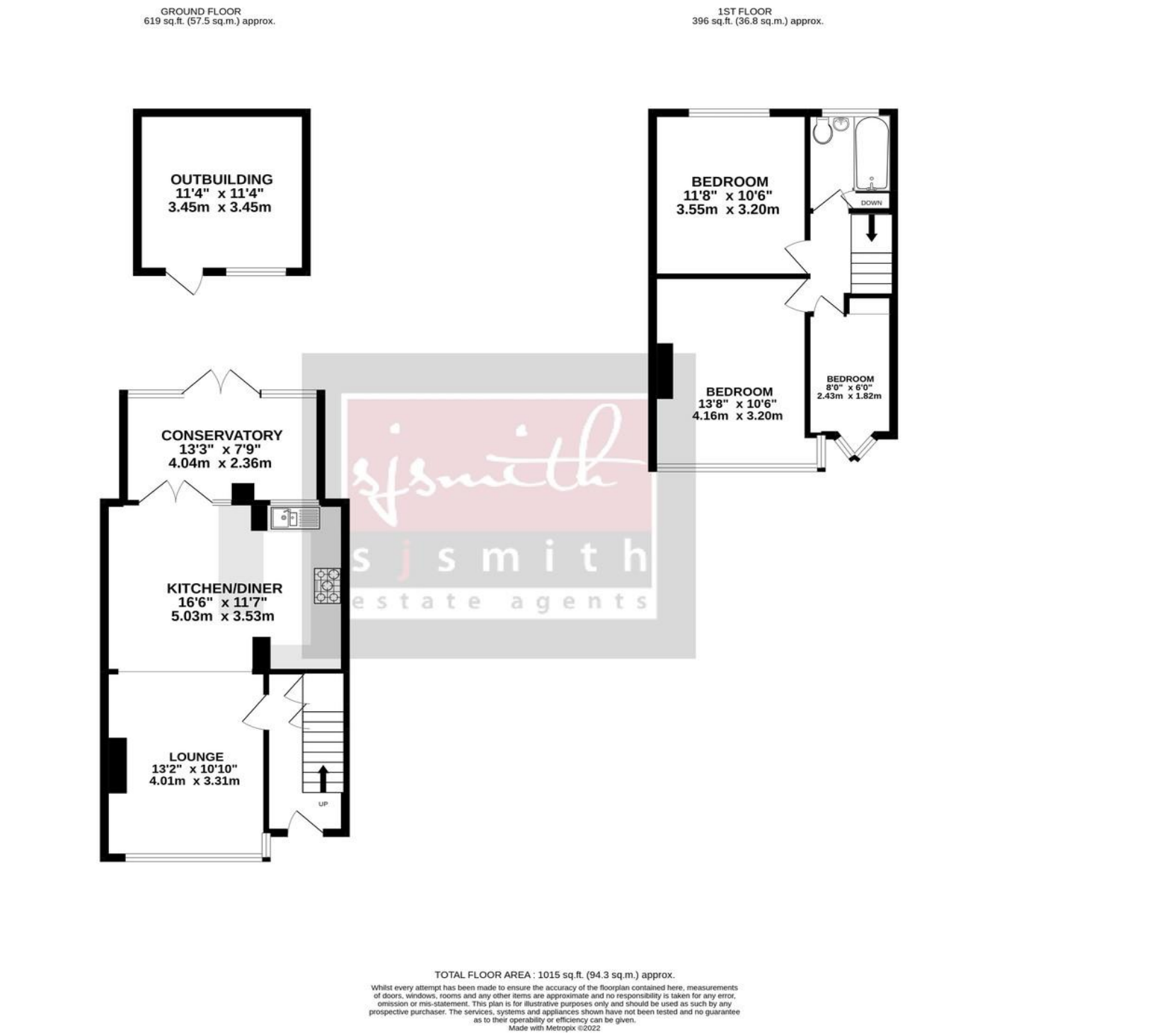
I worked with Chad, Louis and Nicola on the selling of my property in Ashford, and the purchase of a new property with them also. They are honest, decent professionals that have a lovely friendly approach and I cannot recommend them enough. I dealt with other estate agents in the area, with tough sales pitches, and sometimes forcing properties on us, but SJ Smith only contacted us with properties we would like; also they took amazing pictures of my property which really made it easy and quick to sell for a good price in this market! Thanks all! Cindy & James



67 Clockhouse Lane, Ashford TW15 2EP

Asking Price £475,000 Freehold

- NO CHAIN
- OWN DRIVEWAY
- 50FT WESTERLY FACING GARDEN
- OPEN PLAN KITCHEN DINER
- CONSERVATORY
- SCOPE FOR LOFT CONVERSION
- GOOD CONDITION THROUGHOUT
- EPC RATING TBC



A great opportunity to acquire this good sized three bedroom family home which is offered to the market with the benefit of NO ONWARD CHAIN.

Conveniently situated on a slip road adjacent Clockhouse Lane Park and moments from the High Street and local primary schools the property offers many attractive features including: an own driveway to the front allowing parking for two cars, entrance hall with under stairs storage cupboards, a bright bay fronted living room which has been cleverly opened up into a spacious through lounge diner featuring the impressive fully fitted open plan kitchen complete with breakfast bar and usual utilities. In addition to this there is a good size Conservatory offering additional space and enjoying views over the 50ft westerly facing garden with brick built outbuilding at the rear (with power and light). Upstairs comprises of two good size double bedrooms, a further single bedroom, access to the large loft space (which a number of neighbours have already converted into additional bedrooms), and a three piece family bathroom suite.

In the current climate family homes of this type rarely remain available for long so early viewings are recommended to avoid disappointment!

