

ON HOLD



Papermill Avenue, Aberdeen

2 Bedrooms, 1 Bathroom, Apartment

£120,000



- 2 Bedroom Apartment
- Dining Kitchen
- Double Glazing
- Gas Central Heating
- Off Street Parking
- Shared Communal Garden
- External Bike Shed

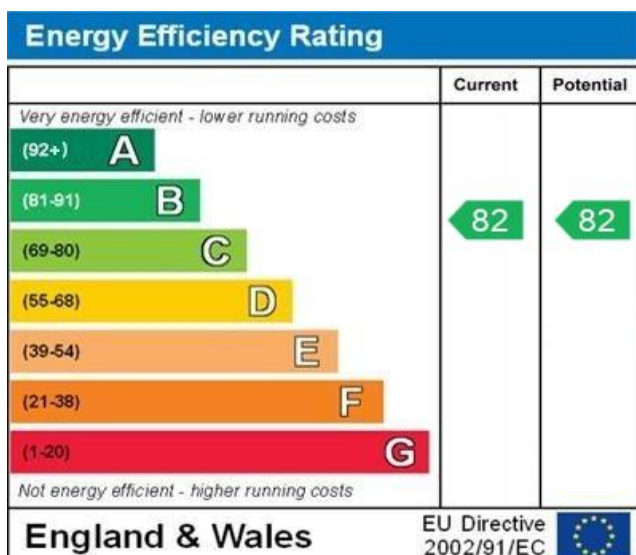
PICTURESQUE PAPERMILL AVENUE! VIRTUAL TOUR AVAILABLE! Beautifully presented 2-bedroom property located in the Donside area of Aberdeen. Situated right on the River Don, it offers stunning views and access to scenic riverside walks. This modern home boasts a range of fantastic features, with a sleek contemporary finish throughout. Benefits include gas central heating, double glazing, and a prime location for easy access to the city centre, Dyce, and Bridge of Don industrial estates. With excellent local schools and recreational facilities nearby, this property is ideal for families or professionals seeking a home office space.

Donside urban village is a well-established residential area situated just minutes from Aberdeen's vibrant city centre, offering excellent access to shopping, leisure, and transport links. The area benefits from its riverside setting along the River Don, providing scenic walking routes and a peaceful outlook.

The community has seen significant regeneration in recent years, with improved amenities and green spaces making it an increasingly popular choice for families, professionals, and students alike.

Other features of the area include:

- Easy access to the University of Aberdeen
- Riverside walks along the River Don
- Newly developed community and health facilities
- Close proximity to Seaton Park
- Convenient for Dyce and Bridge of Don industrial hubs





LOUNGE This beautifully presented living room offers a bright and welcoming space, perfect for relaxing or entertaining. The neutral décor is complemented by carpeted flooring and a large window that fills the room with natural light while offering a leafy outlook. The contemporary glazed door adds an elegant finish and allows light to flow through the adjoining spaces. This room strikes the perfect balance between comfort and style, making it a standout feature of the home.

KITCHEN This modern kitchen is both stylish and functional, featuring sleek gloss cream cabinetry, integrated appliances, and a clean tiled splashback that enhances the sense of space and brightness. The gas hob and built-in oven are complemented by a stainless-steel extractor fan, while under-unit lighting adds a practical and ambient touch. An integrated fridge freezer, washing machine, and ample storage make it perfectly suited for everyday living. The adjoining dining area comfortably accommodates a table and chairs, creating a sociable setting ideal for mealtimes or entertaining guests. With a fresh, neutral finish and direct access to the rest of the home, this space offers the perfect blend of practicality and modern charm.

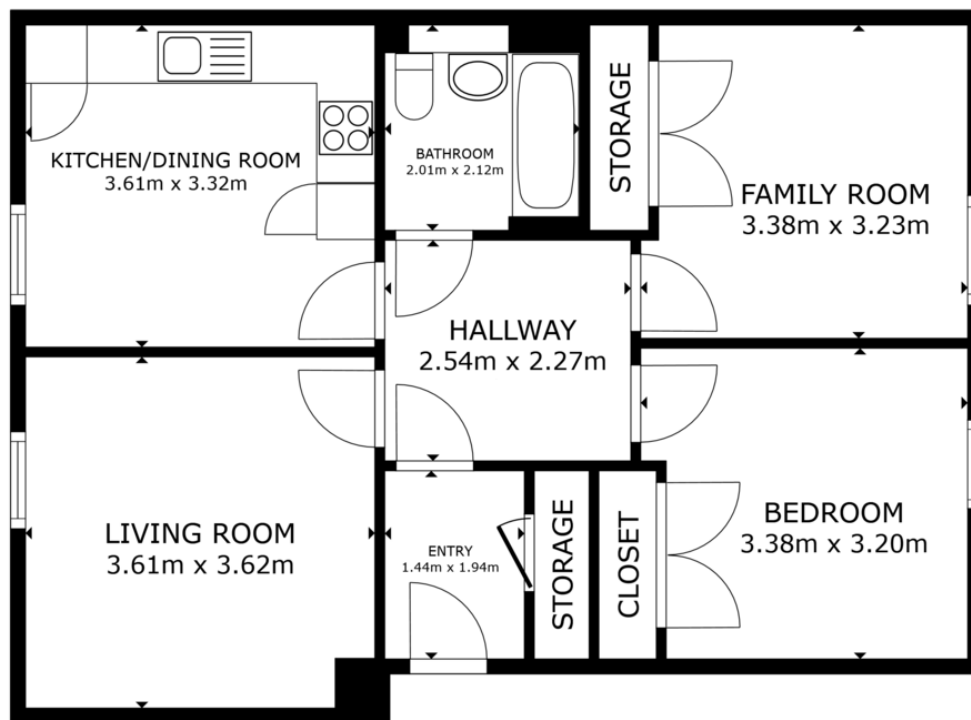


BEDROOM A generous and inviting double bedroom offering a peaceful retreat, with soft neutral décor and ample space for freestanding furniture. The large window allows plenty of natural light to flow in, creating a bright and relaxing atmosphere. Ideal for unwinding after a busy day, this room blends comfort and simplicity, making it an easy space to settle into.

BEDROOM 2 This could be set up as a dedicated home office, this versatile second room would equally serve as a guest bedroom, nursery, or dressing room. With a large window providing natural light, it's a flexible space that can adapt to your lifestyle-whether you're working from home or accommodating overnight visitors. Plenty of space for free standing furniture.

BATHROOM The bathroom is well-presented in a clean, modern style, featuring a white three-piece suite with a shower over the bath. Light wall tiling and neutral flooring create a fresh and bright ambiance, while practical touches like a mirrored cupboard and wooden shelf for additional storage. A smart, low-maintenance space ready to use from day one.





FLOOR PLAN

GROSS INTERNAL AREA
FLOOR PLAN 65.4 m²
TOTAL : 65.4 m²
SIZES AND DIMENSIONS ARE APPROXIMATE, ACTUAL MAY VARY.



01224 63 65 00

<http://www.martinco.com>

Aberdeen

123-125 Rosemount Place • • Aberdeen • AB25 2YH
T: 01224 63 65 00 • E: aberdeen@martinco.com
Letting Agent Registration No. LARN1905074



Accuracy: References to the Tenure of a Property are based on information supplied by the Seller. The Agent has not had sight of the title documents. A Buyer is advised to obtain verification from their Solicitor. Items shown in photographs including but not limited to carpets, fixtures and fittings are not included unless specifically mentioned within the sales particulars. They may however be available by separate negotiation. Buyers must check the availability of any property and make an appointment to view before embarking on any journey to see a property. No person in the employment of the agent has any authority to make any representation about the property, and accordingly any information given is entirely without responsibility on the part of the agents, sellers(s) or lessors(s). Any property particulars are not an offer or contract, nor form part of one. **Sonic / Laser Tape:** Measurements taken using a sonic / laser tape measure may be subject to a small margin of error. **All Measurements:** All Measurements are Approximate. **Services Not tested:** The Agent has not tested any apparatus, equipment, fixtures and fittings or services and so cannot verify that they are in working order or fit for the purpose. A Buyer is advised to obtain verification.

