

TO LET



Brompton, Northallerton

2 Bedrooms, 1 Bathroom, Mid Terraced House

£795 pcm



Brompton, Northallerton

Mid Terraced House,
2 bedroom, 1 bathroom

£795 pcm

Date available: 28th February 2022

Deposit: £795

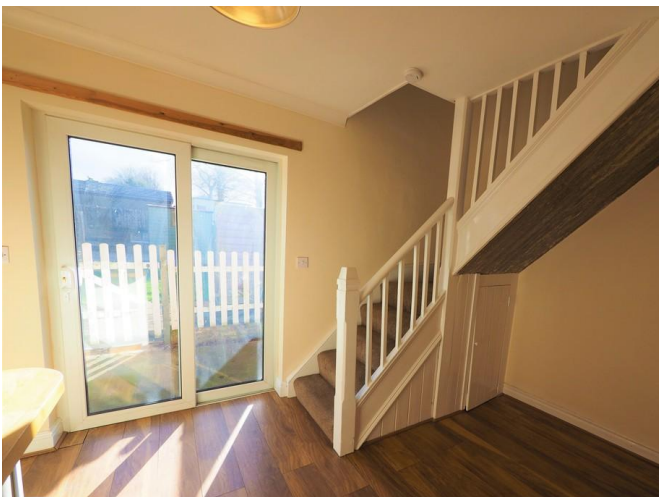
Unfurnished

Council Tax band: A

- Idyllic Location
- Overlooks the Village Green
- Under floor heating
- Short drive to Northallerton
- Private garden
- Additional storage space available to rent
- Lounge

FULL DESCRIPTION Martin and Co are pleased to welcome to the market, this rarely available 2 bedroom cottage situated in the idyllic village of Brompton. Located only a short drive from the centre of Northallerton and benefitting from a local bus service, this property is ideally situated for commuters and families alike. The cottage is a short walk from Brompton Community Primary School and overlooks the village green. Briefly comprising of a living room, kitchen / diner, 2 bedrooms, bathroom and private garden the property also benefits from having the option to rent an additional storage space located only a short walk away. We expect this property to be popular so call us to be the first to enquire.

Energy Efficiency Rating		Current	Potential
Very energy efficient - lower running costs			
(92-100)	A		
(81-91)	B		84
(69-80)	C		
(55-68)	D	60	
(39-54)	E		



Martin & Co Guisborough

83 Westgate • • Guisborough • TS14 6AF

T: 01287 631254 • E: Guisborough@martinco.com <http://www.martinco.com>

01287 631254



Accuracy: References to the Tenure of a Property are based on information supplied by the Seller. The Agent has not had sight of the title documents. A Buyer is advised to obtain verification from their Solicitor. Items shown in photographs including but not limited to carpets, fixtures and fittings are not included unless specifically mentioned within the sales particulars. They may however be available by separate negotiation. Buyers must check the availability of any property and make an appointment to view before embarking on any journey to see a property. No person in the employment of the agent has any authority to make any representation about the property, and accordingly any information given is entirely without responsibility on the part of the agents, sellers(s) or lessors(s). Any property particulars are not an offer or contract, nor for part of one. **Sonic / laser Tape:** Measurements taken using a sonic / laser tape measure may be subject to a small margin of error. **All Measurements:** All Measurements are Approximate. **Services Not tested:** The Agent has not tested any apparatus, equipment, fixtures and fittings or services and so cannot verify that they are in working order or fit for the purpose. A Buyer is advised to obtain verification from their Solicitor or Surveyor.