

FOR SALE



Broughton, Milton Keynes
Offers Over £200,000


MARTIN&CO

26a Swanwick Lane

- Groundfloor Flat
- Private Entrance
- Allocated parking to rear
- Wood effect vinyl
-

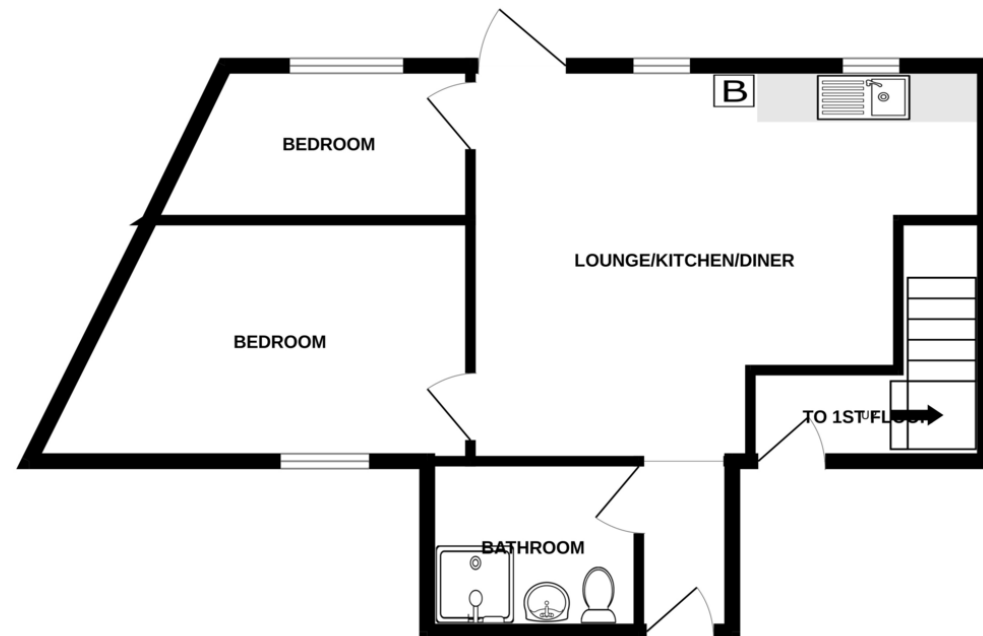
Spacious ground floor flat with private entrance, two double bedrooms, and bright open-plan kitchen/living space. Modern shower room, smart layout, and neutral décor throughout. A new lease will be created by the seller on completion.

→ Book your viewing soon!

Energy Efficiency Rating

	Current	Potential
Very energy efficient - lower running costs		
(92+) A		
(81-91) B		
(69-80) C	78	78
(55-68) D		

GROUND FLOOR



Whilst every attempt has been made to ensure the accuracy of the floorplan contained here, measurements of doors, windows, rooms and any other items are approximate and no responsibility is taken for any error, omission or mis-statement. This plan is for illustrative purposes only and should be used as such by any prospective purchaser. The services, systems and appliances shown have not been tested and no guarantee as to their operability or efficiency can be given.
Made with Metropix ©2025

Milton Keynes

14 Scorpio House • Rockingham Drive • Milton Keynes • MK14 6LY
T: 01908 240044 • E: miltonkeynes@martinco.com

01908 240044

<http://www.martinco.com>

MARTIN&CO

Accuracy: References to the Tenure of a Property are based on information supplied by the Seller. The Agent has not had sight of the title documents. A Buyer is advised to obtain verification from their Solicitor. Items shown in photographs including but not limited to carpets, fixtures and fittings are not included unless specifically mentioned within the sales particulars. They may however be available by separate negotiation. Buyers must check the availability of any property and make an appointment to view before embarking on any journey to see a property. No person in the employment of the agent has any authority to make any representation about the property, and accordingly any information given is entirely without responsibility on the part of the agents, sellers(s) or lessors(s). Any property particulars are not an offer or contract, nor form part of one. **Sonic / Laser Tape:** Measurements taken using a sonic / laser tape measure may be subject to a small margin of error. **All Measurements:** All Measurements are Approximate. **Services Not tested:** The Agent has not tested any apparatus, equipment, fixtures and fittings or services and so cannot verify that they are in working order or fit for the purpose. A Buyer is advised to obtain verification from their Solicitor or Surveyor.