

SOLD STC



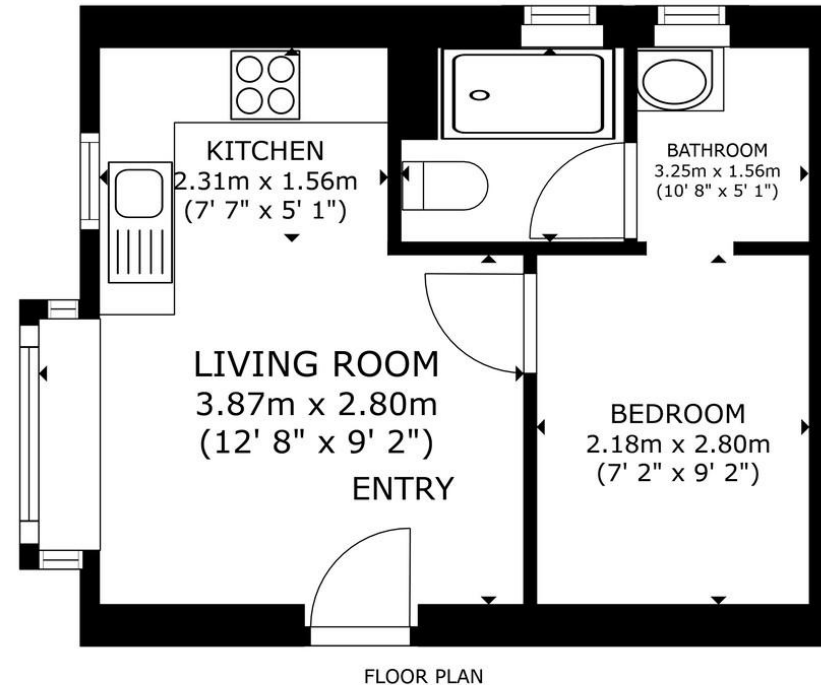
Tom Price Close, Cheltenham
Asking Price Of £109,950


MARTIN & CO

39 Tom Price Close

- Studio Apartment
- 173 Year Lease
- No Ground Rent
- Outside Space
- Central Cheltenham

VIEW OUR 3D Virtual Tour: This immaculately presented studio apartment is set on the ground floor and has a separate bedroom area from the living space and a modern bathroom with large double shower. There is space for a wardrobe off the bedroom and the property has a small front lawn space.



Score	Energy rating	Current	Potential
92+	A		
81-91	B		
69-80	C		
55-68	D		60 D
39-54	E	47 E	
21-38	F		



GROSS INTERNAL AREA
 FLOOR PLAN 26.5 m² (285 sq.ft.)
 TOTAL : 26.5 m² (285 sq.ft.)
 SIZES AND DIMENSIONS ARE APPROXIMATE, ACTUAL MAY VARY.



Cheltenham Office

33 Rodney Road • Cheltenham • GL50 1HX
 T: 01242 220600 • E: cheltenham@martinco.com

01242 220600

<http://www.martinco.com>



Accuracy: References to the Tenure of a Property are based on information supplied by the Seller. The Agent has not had sight of the title documents. A Buyer is advised to obtain verification from their Solicitor. Items shown in photographs including but not limited to carpets, fixtures and fittings are not included unless specifically mentioned within the sales particulars. They may however be available by separate negotiation. Buyers must check the availability of any property and make an appointment to view before embarking on any journey to see a property. No person in the employment of the agent has any authority to make any representation about the property, and accordingly any information given is entirely without responsibility on the part of the agents, sellers(s) or lessors(s). Any property particulars are not an offer or contract, nor form part of one. **Sonic / Laser Tape:** Measurements taken using a sonic / laser tape measure may be subject to a small margin of error. **All Measurements:** All Measurements are Approximate. **Services Not tested:** The Agent has not tested any apparatus, equipment, fixtures and fittings or services and so cannot verify that they are in working order or fit for the purpose. A Buyer is advised to obtain verification from their Solicitor or Surveyor.

