



Stonebridge Place, Blackbridge Lane, Horsham, RH12 1TX.
Guide Price £180,000 Leasehold


MARTIN&CO

- **First floor apartment**
- **One double bedroom**
- **Open plan living**
- **Modern kitchen area**
- **Juliet balcony**
- **Central location**
- **EPC C**
- **Allocated parking**

This well presented one bedroom first floor apartment offers a bright, practical and easy to manage home in a highly convenient Horsham location, well placed for the town centre, local amenities and transport links.

The accommodation is arranged around an entrance hallway, leading into a generous open plan kitchen and living area. This is a lovely light space, with a broad window and doors opening to a Juliet balcony, giving the room a pleasant outlook towards mature trees.

The layout works well for modern living, with enough space for both seating and dining areas.

The kitchen is neatly fitted with a range of modern units, integrated cooking appliances, worktop space and a breakfast bar style return, creating a sociable and efficient area without losing too much of the living space.

The bedroom is a comfortable double room, again presented in neutral tones and offering a calm feel. The bathroom is fitted with a white suite including bath with shower over, wash basin, WC and heated towel rail.



Outside, the development is set back from the road with an attractive frontage and established planting. The apartment also benefits from parking, making it a very convenient option for those wanting easy access to Horsham without the maintenance demands of a larger home.

This is a smart, well located apartment that should appeal to buyers looking for a manageable home, a town base or a long term investment.

Material Facts

Guide Price £180,000

Tenure: Leasehold

Lease 999 years started 1st January 2024

997 years remaining

Service charge £1618 per annum

No ground rent payable

Council Tax Band : B

EPC: C

Property type: First floor apartment no lift access

Mains services: Electricity, water and drainage

Heating type: Electric Heating to radiators

Broadband information:

Standard To Fast Available

Speeds from 11mbps to 80 mbps

Mobile coverage:

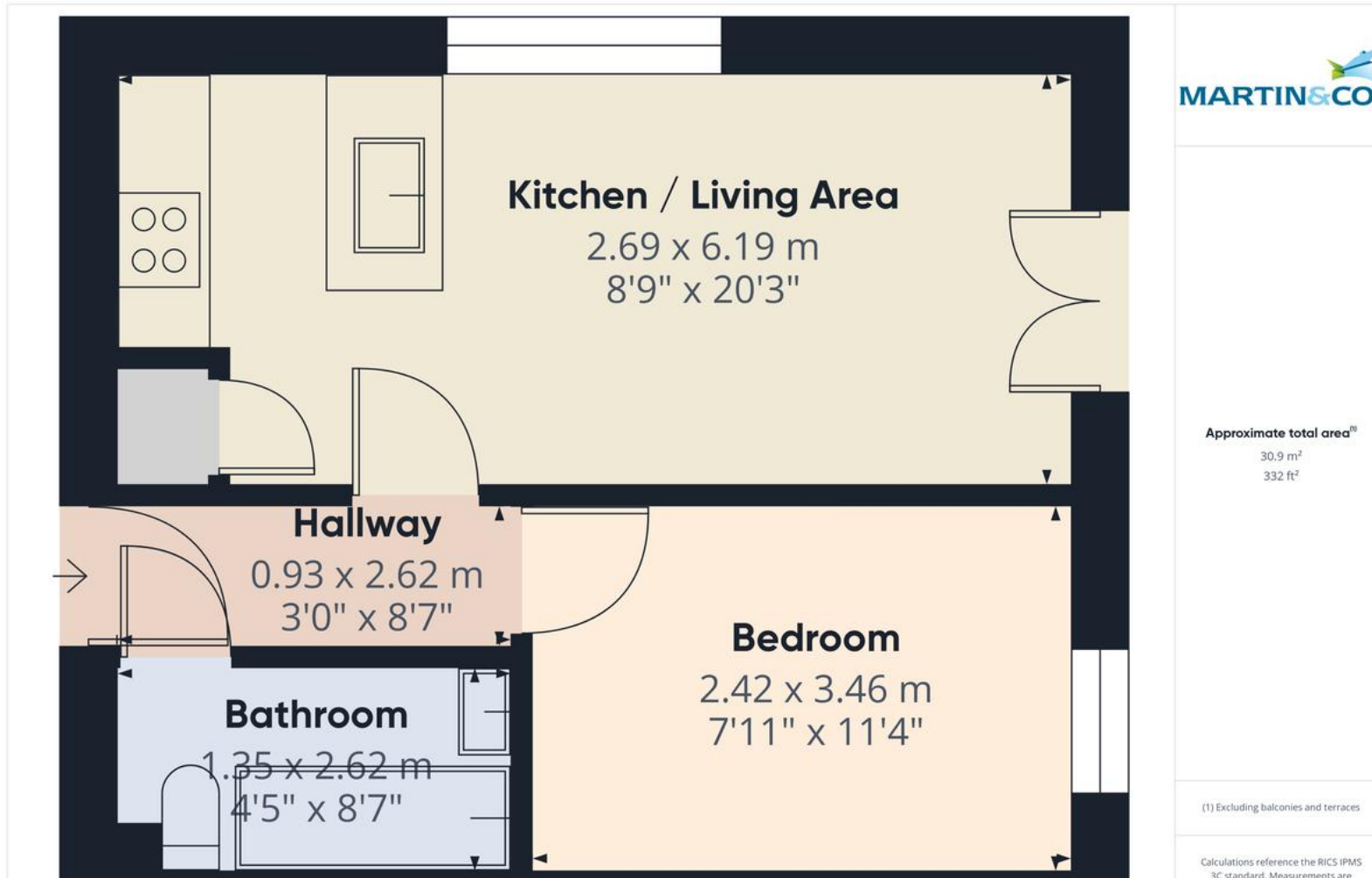
Good on most providers

Flood / erosion risk:

River and seas: Low risk

Surface water: Very Low risk





Martin & Co Horsham

Envision House • 5 North Street • Horsham • RH12 1XQ
T: 01403 248222 • E: horsham@martinco.com

01403 248222

<http://www.martinco.com>



Accuracy: References to the Tenure of a Property are based on information supplied by the Seller. The Agent has not had sight of the title documents. A Buyer is advised to obtain verification from their Solicitor. Items shown in photographs including but not limited to carpets, fixtures and fittings are not included unless specifically mentioned within the sales particulars. They may however be available by separate negotiation. Buyers must check the availability of any property and make an appointment to view before embarking on any journey to see a property. No person in the employment of the agent has any authority to make any representation about the property, and accordingly any information given is entirely without responsibility on the part of the agents, sellers(s) or lessors(s). Any property particulars are not an offer or contract, nor form part of one. **Sonic / Laser Tape:** Measurements taken using a sonic / laser tape measure may be subject to a small margin of error. **All Measurements:** All Measurements are Approximate. **Services Not tested:** The Agent has not tested any apparatus, equipment, fixtures and fittings or services and so cannot verify that they are in working order or fit for the purpose. A Buyer is advised to obtain verification from their Solicitor or Surveyor.