

FOR SALE



Varsity Place, John Towle Close
Guide Price £285,000


MARTIN&CO

Varsity Place, John Towle

Close

Key Notes:

- Arranged over Two Floors
- Short Commute To The Town Centre
- Allocated Parking
- Vacant Possession
- No Onward Chain
- Council Tax Band: D
- Service Charge: £1,897.32 PA
- Ground Rent: £0.00 PA
- Lease Term: 999 years from 1st January 1995
- Tenure: Leasehold



Score	Energy rating	Current	Potential
92+	A		
81-91	B		
69-80	C		73 C
55-68	D	68 D	
39-54	E		
21-38	F		
1-20	G		

Situated in the highly sought-after area of South Oxford, this well-presented duplex apartment offers flexible accommodation arranged over two floors.

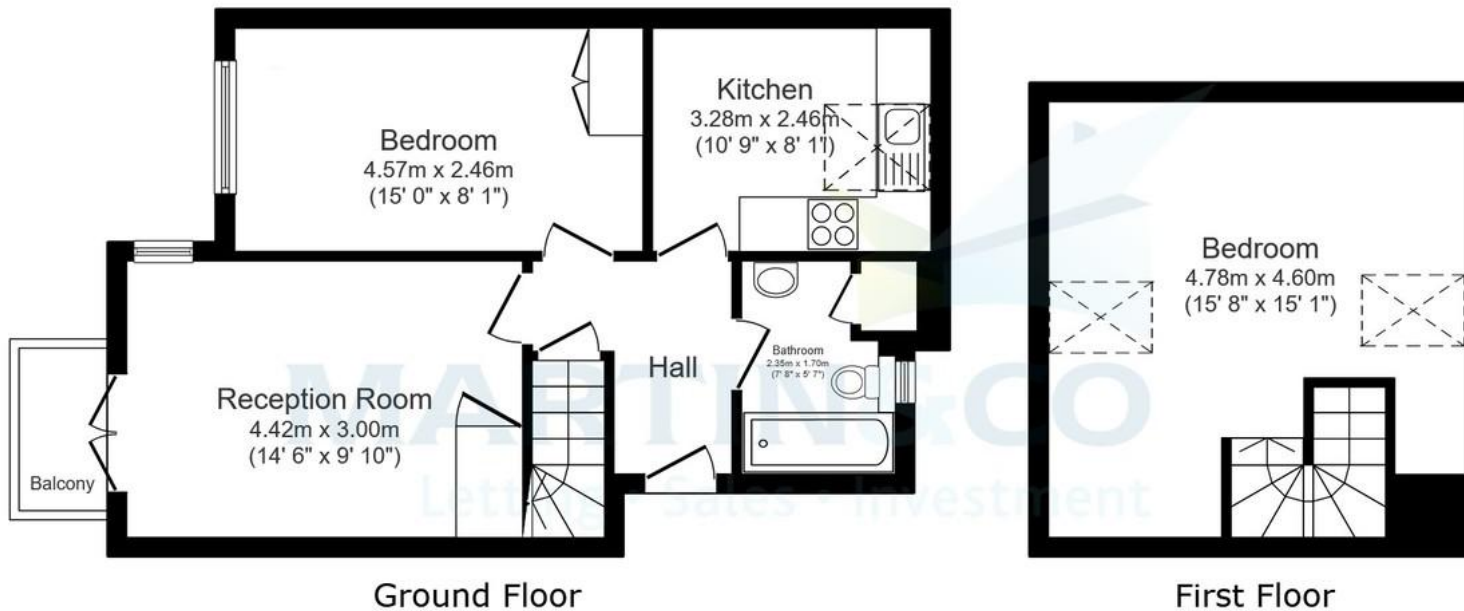
The property comprises a double bedroom with fitted storage, a fitted kitchen with appliances and dining space, and a bright living room with French doors opening onto a private balcony. The upper floor features a spacious loft room, ideal as a second bedroom, home office, study, or additional reception area.

New Hinksey is one of Oxford's most desirable residential locations, combining easy access to the city centre with excellent outdoor amenities. Riverside walks and cycle routes connect the area to Christ Church Meadow, Oxford Railway Station, the University colleges, Oxford Brookes University, the John Radcliffe Hospital, and the Westgate Shopping Centre.

The nearby Hinksey Park offers an outdoor swimming pool, tennis courts, children's play areas, allotments, and attractive green spaces, while the River Thames provides access to rowing clubs, boathouses, and scenic waterside walks.

Regular bus services, convenient access to the ring road, and direct connections to London and major airports make the location particularly appealing to professionals and commuters alike. Well-regarded local schools further enhance the area's popularity.





Total floor area: 66.3 sq.m. (714 sq.ft.)

This floor plan is for illustrative purposes only. It is not drawn to scale. Any measurements, floor areas (including any total floor area), openings and orientations are approximate. No details are guaranteed, they cannot be relied upon for any purpose and do not form any part of any agreement. No liability is taken for any error, omission or misstatement. A party must rely upon its own inspection(s). Powered by www.Propertybox.io

Martin & Co Oxford

31 Woodins Way • Paradise Street • •OX1 1HD
T: 01865 812110 • E: oxford@martinco.com

01865 812110
<http://www.martinco.com>



Accuracy: References to the Tenure of a Property are based on information supplied by the Seller. The Agent has not had sight of the title documents. A Buyer is advised to obtain verification from their Solicitor. Items shown in photographs including but not limited to carpets, fixtures and fittings are not included unless specifically mentioned within the sales particulars. They may however be available by separate negotiation. Buyers must check the availability of any property and make an appointment to view before embarking on any journey to see a property. No person in the employment of the agent has any authority to make any representation about the property, and accordingly any information given is entirely without responsibility on the part of the agents, sellers(s) or lessors(s). Any property particulars are not an offer or contract, nor form part of one. **Sonic / Laser Tape:** Measurements taken using a sonic / laser tape measure may be subject to a small margin of error. **All Measurements:** All Measurements are Approximate. **Services Not tested:** The Agent has not tested any apparatus, equipment, fixtures and fittings or services and so cannot verify that they are in working order or fit for the purpose. A Buyer is advised to obtain verification from their Solicitor or Surveyor.