

FOR SALE



Rowland Hill Court, Osney Lane
Guide Price £470,000


MARTIN&CO

Rowland Hill Court, Osney Lane

Key Notes:

- Vacant Possession
- Allocated Parking Space
- Close to Oxford Train Station
- Secure Gated Parking Space
- No Onward Chain
- Council Tax Band: E
- Ground Rent: £305.00 PA
- Service Charge: £1,250.06 PA
- Tenure: Leasehold
- Lease Term: 125 years from 24th June 2000



Score	Energy rating	Current	Potential
92+	A		
81-91	B	84 B	84 B
69-80	C		
55-68	D		
39-54	E		
21-38	F		
1-20	G		



This spacious and modern first-floor apartment offers two bedrooms and two bathrooms in the sought-after gated development of Rowland Hill Court. Available with no onward chain, the property also includes an allocated covered parking space within a secure community, as well as convenient bike storage for residents.

Ideally located near the Said Business School and Oxford's train and coach stations, the apartment is within easy walking distance of the city centre and its wide range of amenities. Its prime central location makes it an excellent choice both as a comfortable residence and a strong investment property, with consistent demand from professionals and academics.

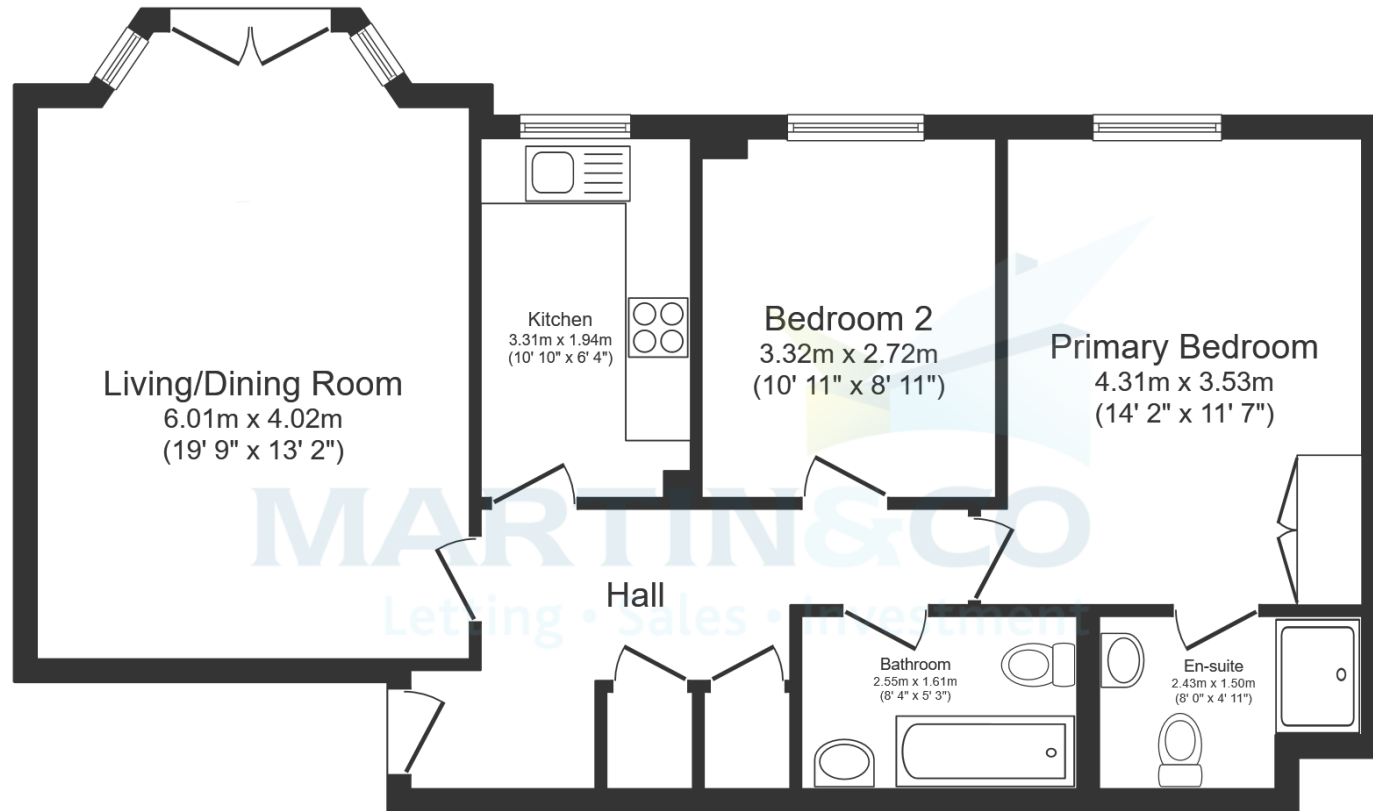
Extending to approximately 74.2 m² (798 ft²), the apartment is well laid out to maximise space and natural light.

Internally, the property is decorated in neutral tones and features an entrance hall with an entry phone system and two storage cupboards. A particular highlight is the generously proportioned living room. This versatile space comfortably accommodates both seating and dining areas, and is further enhanced by a large bay window and Juliette balcony.

The separate kitchen is fitted with modern units and integrated appliances. There are two well-proportioned bedrooms, including a principal bedroom with built-in wardrobes and an en-suite shower room, along with a separate guest bathroom.

Residents also benefit from well-maintained communal grounds with mature trees, shrubs, and lawn areas, providing a pleasant setting within this secure development.





Floor Plan

Total floor area: 71.8 sq.m. (773 sq.ft.)

This floor plan is for illustrative purposes only. It is not drawn to scale. Any measurements, floor areas (including any total floor area), openings and orientations are approximate. No details are guaranteed, they cannot be relied upon for any purpose and do not form any part of any agreement. No liability is taken for any error, omission or misstatement. A party must rely upon its own inspection(s). Powered by www.Propertybox.io

Martin & Co Oxford

31 Woodins Way • Paradise Street • •OX1 1HD
T: 01865 812110 • E: oxford@martinco.com

01865 812110

<http://www.martinco.com>



Accuracy: References to the Tenure of a Property are based on information supplied by the Seller. The Agent has not had sight of the title documents. A Buyer is advised to obtain verification from their Solicitor. Items shown in photographs including but not limited to carpets, fixtures and fittings are not included unless specifically mentioned within the sales particulars. They may however be available by separate negotiation. Buyers must check the availability of any property and make an appointment to view before embarking on any journey to see a property. No person in the employment of the agent has any authority to make any representation about the property, and accordingly any information given is entirely without responsibility on the part of the agents, sellers(s) or lessors(s). Any property particulars are not an offer or contract, nor form part of one. **Sonic / laser Tape:** Measurements taken using a sonic / laser tape measure may be subject to a small margin of error. **All Measurements:** All Measurements are Approximate. **Services Not tested:** The Agent has not tested any apparatus, equipment, fixtures and fittings or services and so cannot verify that they are in working order or fit for the purpose. A Buyer is advised to obtain verification from their Solicitor or Surveyor.