

FOR SALE



Rowland Hill Court, Osney Lane
Guide Price £450,000


MARTIN&CO

Rowland Hill Court, Osney Lane

Key Notes:

- Ground Floor Apartment
- Allocated Parking Space
- Close to Oxford Train Station
- Two Bathrooms (inc En-Suite Shower)
- No Onward Chain
- Council Tax Band: E
- Ground Rent: £0.00 PA
- Service Charge: £1,250.06 PA
- Lease Term: 999 Years from 1st January 2003
- Tenure: Share of Freehold



Score	Energy rating	Current	Potential
92+	A		
81-91	B		
69-80	C	70 C	78 C
55-68	D		
39-54	E		
21-38	F		
1-20	G		



This well-presented ground floor flat offers spacious and well-balanced accommodation, ideally positioned in a sought-after location close to excellent public transport links, local amenities, green spaces and a wealth of historic attractions.

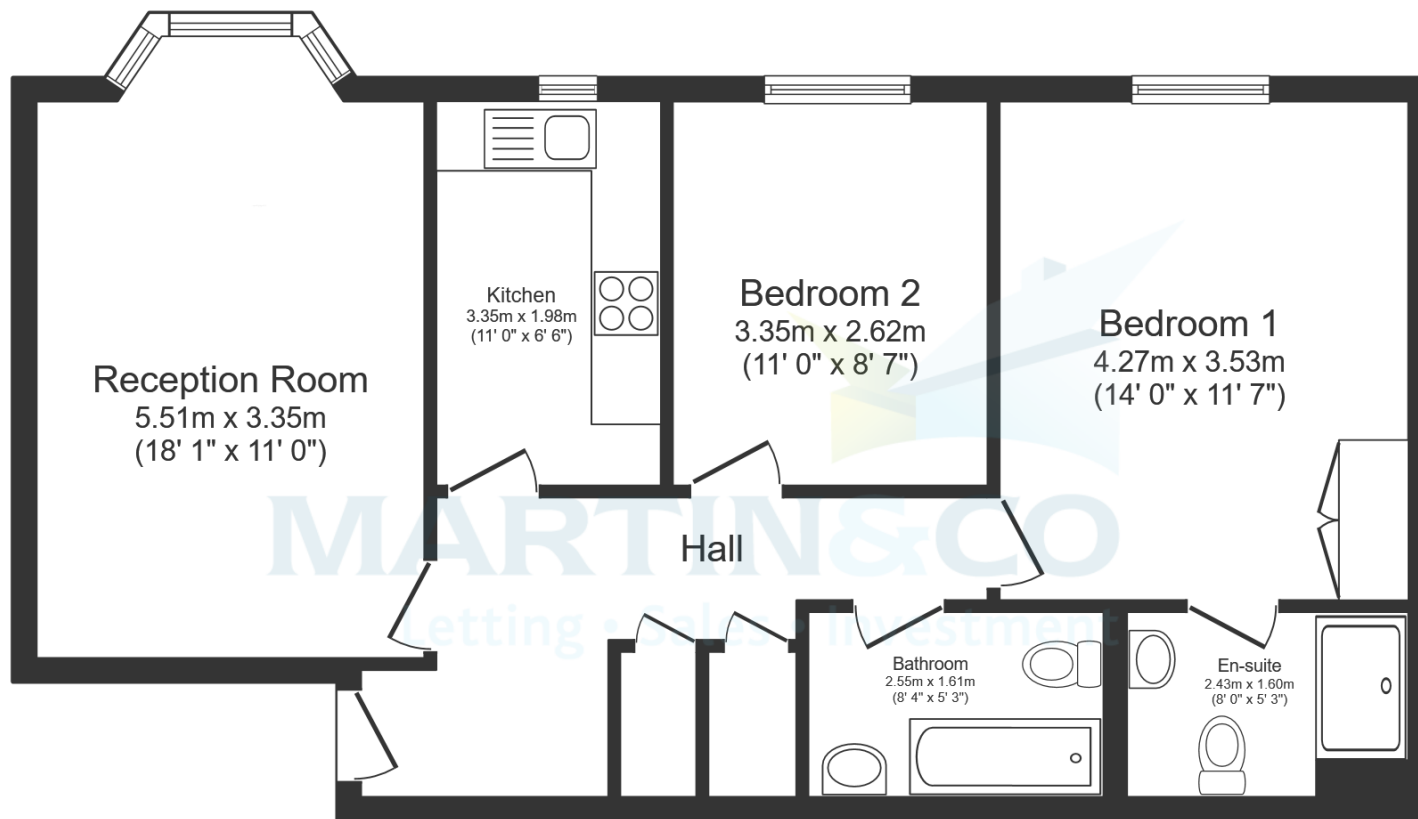
The property is accessed via a welcoming entrance hall leading to a bright and generously proportioned reception room, enjoying pleasant views over the communal gardens and providing an ideal space for both relaxing and entertaining. The separate fitted kitchen offers a practical layout with ample worktop and cupboard space, making it well suited to everyday living.

There are two well-proportioned double bedrooms, with the principal bedroom benefiting from built-in wardrobes and a private en-suite shower room. The second bedroom is also a comfortable double, making it ideal for guests, family members or use as a home office. A separate family bathroom serves the remainder of the accommodation.

Further benefits include allocated parking within a secure gated development, offering both convenience and peace of mind.

Combining generous living space, practical accommodation and an excellent location, this attractive apartment presents an ideal opportunity for first-time buyers, downsizers or investors alike.





Ground Floor

Total floor area 72.3 sq.m. (779 sq.ft.)

This floor plan is for illustrative purposes only. It is not drawn to scale. Any measurements, floor areas (including any total floor area), openings and orientations are approximate. No details are guaranteed, they cannot be relied upon for any purpose and do not form any part of any agreement. No liability is taken for any error, omission or misstatement. A party must rely upon its own inspection(s). Powered by www.Propertybox.io

Martin & Co Oxford

31 Woodins Way • Paradise Street • •OX1 1HD
T: 01865 812110 • E: oxford@martinco.com

01865 812110

<http://www.martinco.com>



Accuracy: References to the Tenure of a Property are based on information supplied by the Seller. The Agent has not had sight of the title documents. A Buyer is advised to obtain verification from their Solicitor. Items shown in photographs including but not limited to carpets, fixtures and fittings are not included unless specifically mentioned within the sales particulars. They may however be available by separate negotiation. Buyers must check the availability of any property and make an appointment to view before embarking on any journey to see a property. No person in the employment of the agent has any authority to make any representation about the property, and accordingly any information given is entirely without responsibility on the part of the agents, sellers(s) or lessors(s). Any property particulars are not an offer or contract, nor form part of one. **Sonic / laser Tape:** Measurements taken using a sonic / laser tape measure may be subject to a small margin of error. **All Measurements:** All Measurements are Approximate. **Services Not tested:** The Agent has not tested any apparatus, equipment, fixtures and fittings or services and so cannot verify that they are in working order or fit for the purpose. A Buyer is advised to obtain verification from their Solicitor or Surveyor.