

FOR SALE



Pether Road, Headington
Guide Price £400,000


MARTIN&CO

Pether Road, Headington

Key Notes:

- Mid-Terraced House
- Off-Road Parking
- Local Amenities Nearby
- Prime East Oxford Location
- Licensed to Five Sharers as HMO
- Vacant Possession
- No Onward Chain
- Council Tax Band: D
- Five Bedrooms
- Tenure: Freehold
- Close to Local Hospitals



Score	Energy rating	Current	Potential
92+	A		
81-91	B		82 B
69-80	C	72 C	
55-68	D		
39-54	E		
21-38	F		
1-20	G		



Martin & Co are delighted to present this spacious five-bedroom mid-terraced home, ideally located on Pether Road in Headington. Offered with vacant possession and no onward chain, this property is perfect for investors or those seeking a generous multi-bedroom residence.

Previously licensed as a five-bedroom HMO, the property presents an excellent investment opportunity or a versatile home for a growing family.

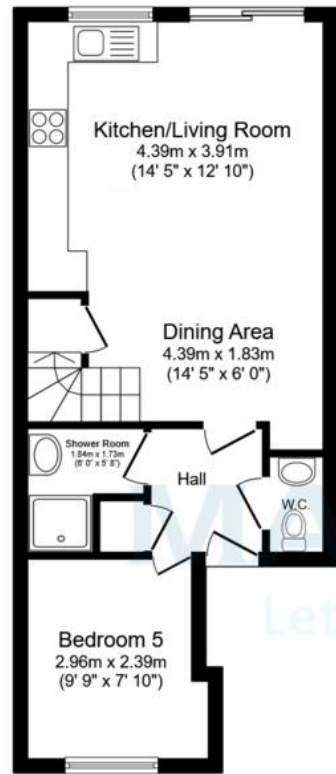
Upon entering, you are welcomed into a bright entrance hall leading to a well-proportioned downstairs bedroom, an open-plan kitchen and living area, a WC, and a shower room. The first floor features two comfortable bedrooms, while the second floor offers two additional bedrooms and a family bathroom.

Externally, the property benefits from off-road parking and a private enclosed rear garden, providing valuable outdoor space.

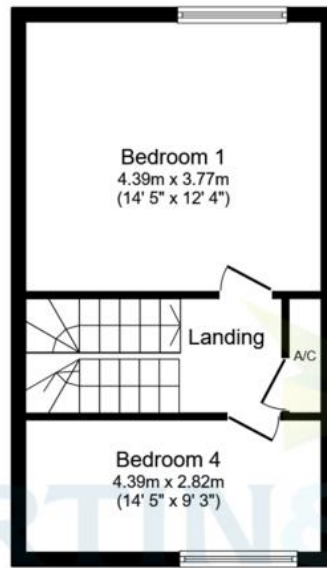
Ideally located for access to the Churchill and Nuffield hospitals. There are multiple amenities including a local row of shops, health centre and a primary school. Shotover Country Park and the CS Lewis Nature Reserve are nearby as is central Headington (approx.1.0 miles) with its wealth of shops, bars, restaurants and bus links to London and the London airports.

Don't miss out on this fantastic opportunity-contact Martin & Co today to arrange a viewing!

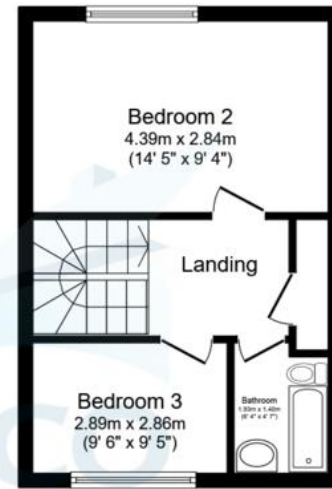




Ground Floor
Floor area 42.3 sq.m. (455 sq.ft.)



First Floor
Floor area 34.5 sq.m. (372 sq.ft.)



Second Floor
Floor area 29.4 sq.m. (317 sq.ft.)

Total floor area: 106.2 sq.m. (1,143 sq.ft.)

This floor plan is for illustrative purposes only. It is not drawn to scale. Any measurements, floor areas (including any total floor area), openings and orientations are approximate. No details are guaranteed, they cannot be relied upon for any purpose and do not form any part of any agreement. No liability is taken for any error, omission or misstatement. A party must rely upon its own inspection(s). Powered by www.Propertybox.io

Martin & Co Oxford

31 Woodins Way • Paradise Street • •OX1 1HD
T: 01865 812110 • E: oxford@martinco.com

01865 812110

<http://www.martinco.com>



Accuracy: References to the Tenure of a Property are based on information supplied by the Seller. The Agent has not had sight of the title documents. A Buyer is advised to obtain verification from their Solicitor. Items shown in photographs including but not limited to carpets, fixtures and fittings are not included unless specifically mentioned within the sales particulars. They may however be available by separate negotiation. Buyers must check the availability of any property and make an appointment to view before embarking on any journey to see a property. No person in the employment of the agent has any authority to make any representation about the property, and accordingly any information given is entirely without responsibility on the part of the agents, sellers(s) or lessors(s). Any property particulars are not an offer or contract, nor form part of one. **Sonic / laser Tape:** Measurements taken using a sonic / laser tape measure may be subject to a small margin of error. **All Measurements:** All Measurements are Approximate. **Services Not tested:** The Agent has not tested any apparatus, equipment, fixtures and fittings or services and so cannot verify that they are in working order or fit for the purpose. A Buyer is advised to obtain verification from their Solicitor or Surveyor.