

**TO LET**



**Regency Close, Uckfield**  
**£1,150 pcm**

  
**MARTIN&CO**

# Regency Close, Uckfield

Flat,  
2-bedroom, 1-bathroom

£1,150 pcm

Date available: 14<sup>th</sup> July 2026

Deposit: £1,326

Unfurnished

Council Tax band: C

- UPVC Double Glazing
- Close Proximity to Town Centre
- Two Bedrooms
- Garage



Available Date - From 14th July 2026

Holding Deposit - £265.00

Rent - £1150pcm

Deposit - £1326.00

Council Tax Band - 'C'

Electricity Supply - Mains services

Water Supply - Mains services

Sewerage - Mains services

Heating - Electric

Broadband - Ultrafast available (According to Ofcom)

Mobile Signal Coverage - Likely indoor & outdoor



(According to Ofcom)  
Parking – Street parking

**SITTING ROOM** 12' 5" x 11' 8" (3.81m x 3.57m) The sitting room is located to the rear of the building with a west aspect taking full advantage of afternoon sun

**KITCHEN/BREAKFAST ROOM** 8' 8" x 11' 8" (2.65m x 3.57m) The bright airy room at the front fitted with pale wood effect units with contrasting work tops. There is a electric hob/oven.

**BEDROOM ONE** 12' 7" x 9' 1" (3.84m x 2.79m) Double bedroom

**BATHROOM** White suite with shower over bath

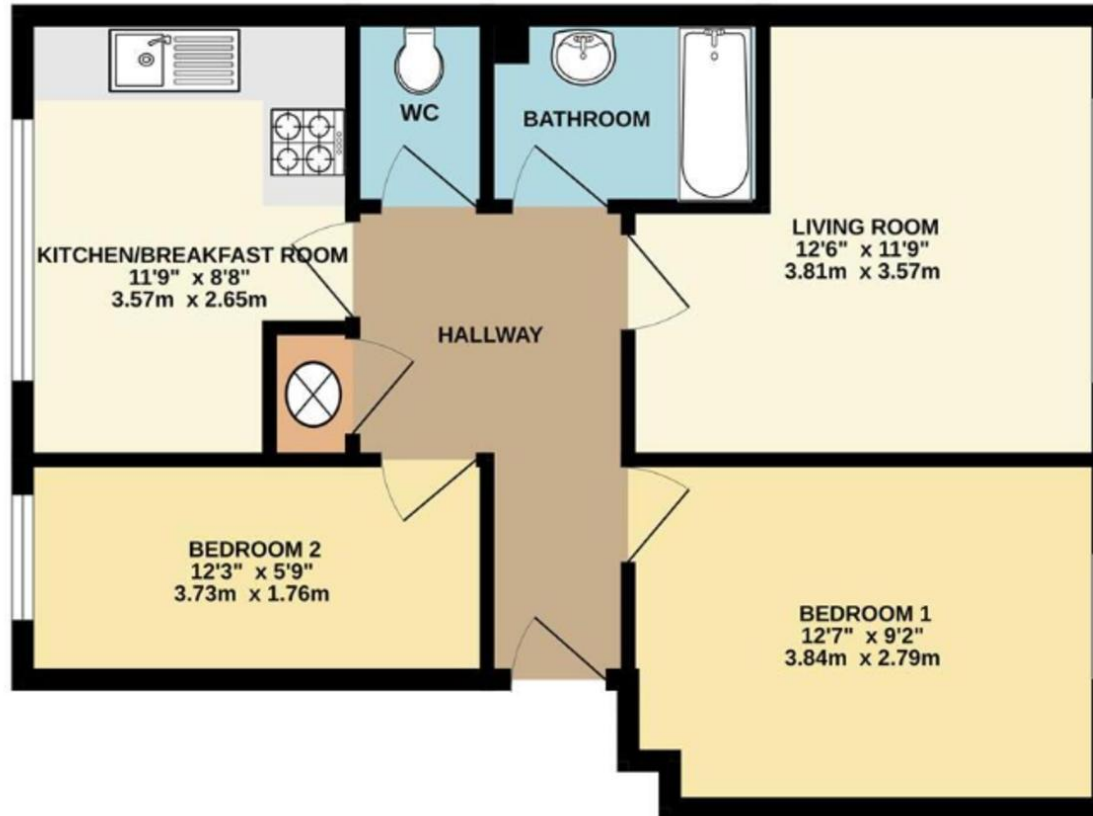
**BEDROOM TWO** 12' 2" x 5' 9" (3.73m x 1.76m) Single bedroom

**GARAGE** Single garage



Score	Energy rating	Current	Potential
92+	A		
81-91	B		
69-80	C		80 C
55-68	D	62 D	
39-54	E		
21-38	F		
1-20	G		





## Martin & Co Uckfield

94c High Street • Uckfield • TN22 1PU  
 T: 01825 744033 • E: uckfield@martinco.com

# 01825 744033

<http://www.martinco.com>



**Accuracy:** References to the Tenure of a Property are based on information supplied by the Seller. The Agent has not had sight of the title documents. A Buyer is advised to obtain verification from their Solicitor. Items shown in photographs including but not limited to carpets, fixtures and fittings are not included unless specifically mentioned within the sales particulars. They may however be available by separate negotiation. Buyers must check the availability of any property and make an appointment to view before embarking on any journey to see a property. No person in the employment of the agent has any authority to make any representation about the property, and accordingly any information given is entirely without responsibility on the part of the agents, sellers(s) or lessors(s). Any property particulars are not an offer or contract, nor form part of one. **Sonic / Laser Tape:** Measurements taken using a sonic / laser tape measure may be subject to a small margin of error. **All Measurements:** All Measurements are Approximate. **Services Not tested:** The Agent has not tested any apparatus, equipment, fixtures and fittings or services and so cannot verify that they are in working order or fit for the purpose. A Buyer is advised to obtain verification from their Solicitor or Surveyor.