

TO LET



Lewes, East Sussex
£1,900 pcm


MARTIN&CO

Lewes, East Sussex

Semi-detached,
4 bedroom, 1 bathroom

£1,900 pcm

Date available: 25th September

Deposit: £2,192

Unfurnished

Council Tax band: F

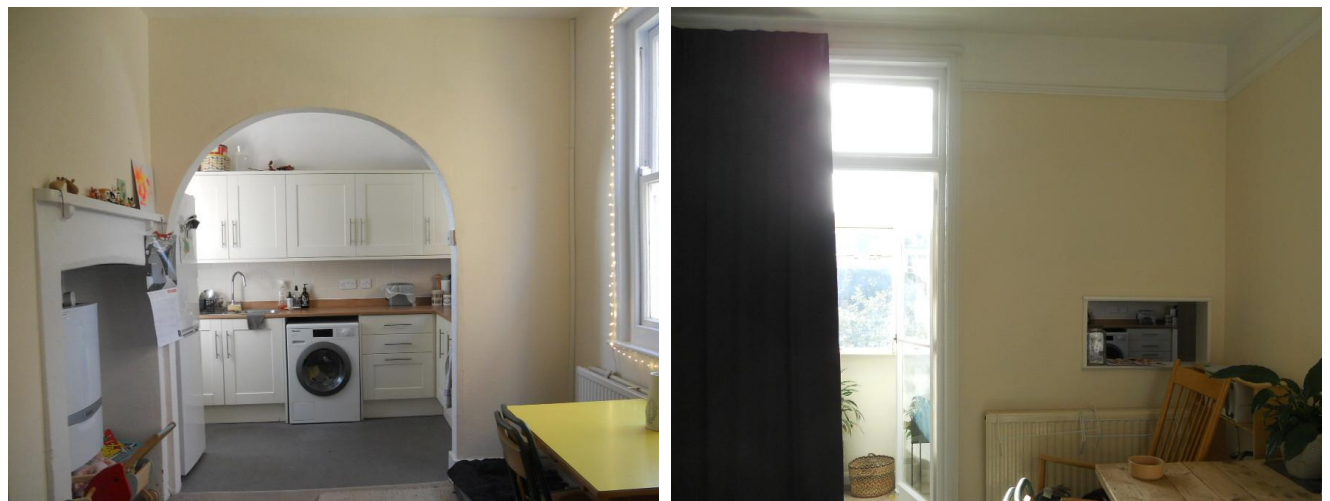
- Edwardian Property
- Enclosed Rear Garden
- Wide Tree Lined Road
- Close To Town Centre



GROUND FLOOR ENTRANCE HALL

LOUNGE 14' 5" x 12' 5" (4.4m x 3.8m) Large bay window

DINING ROOM / RECEPTION ROOM 12' 9" x 10' 2" (3.9m x 3.1m) Dining room



KITCHEN 17' 10" x 9' 10" (5.45m x 3m)
Newly refitted with built in oven and hob

FIRST FLOOR

BATHROOM Bathroom with shower attachment

WC

MASTER BEDROOM 16' 6" x 11' 9" (5.05m x 3.6m) Master bedroom

SECOND BEDROOM 12' 9" x 10' 2" (3.9m x 3.1m) Second bedroom

THIRD BEDROOM 9' 10" x 8' 6" (3m x 2.6m) Third bedroom

SECOND FLOOR

FOURTH BEDROOM 15' 5" x 13' 5" (4.7m x 4.1m) Second floor bedroom



Martin & Co Uckfield

94c High Street • Uckfield • TN22 1PU
T: 01825 744033 • E: uckfield@martinco.com

01825 744033

<http://www.martinco.com>



Accuracy: References to the Tenure of a Property are based on information supplied by the Seller. The Agent has not had sight of the title documents. A Buyer is advised to obtain verification from their Solicitor. Items shown in photographs including but not limited to carpets, fixtures and fittings are not included unless specifically mentioned within the sales particulars. They may however be available by separate negotiation. Buyers must check the availability of any property and make an appointment to view before embarking on any journey to see a property. No person in the employment of the agent has any authority to make any representation about the property, and accordingly any information given is entirely without responsibility on the part of the agents, sellers(s) or lessors(s). Any property particulars are not an offer or contract, nor form part of one. **Sonic / Laser Tape:** Measurements taken using a sonic / laser tape measure may be subject to a small margin of error. **All Measurements:** All Measurements are Approximate. **Services Not tested:** The Agent has not tested any apparatus, equipment, fixtures and fittings or services and so cannot verify that they are in working order or fit for the purpose. A Buyer is advised to obtain verification from their Solicitor or Surveyor.