

TO LET



Eastgate Wharf, Lewes
£1050 pcm


MARTIN&CO

Eastgate Wharf, Lewes

First Floor Apartment,
1 bedroom, 1 Shower Room

£1050 pcm

Date available: From 15th July 2026

Deposit: £1,211

Unfurnished

Council Tax band: B



Available Date - 15th July 2026

Holding Deposit - £242.00

Rent - £1050pcm

Deposit - £1211

Council Tax Band – 'B'

Electricity Supply – Mains services

Water Supply – Mains services

Sewerage – Mains services

Heating – Electric

Broadband – Superfast (According to Ofcom)

Mobile Signal Coverage – Good outdoor, variable in home



(According to Ofcom)

Parking – Street

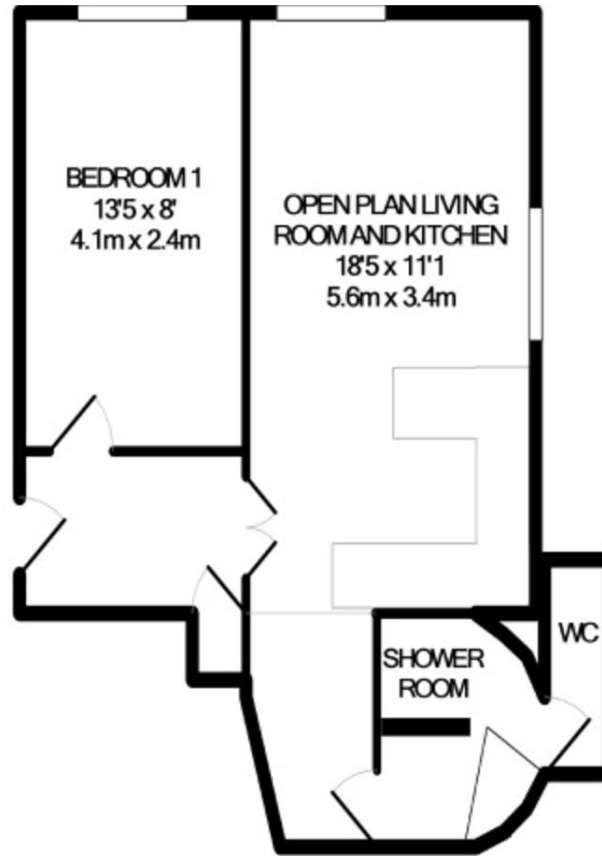
ENTRANCE HALL Storage Cupboard

LIVING AREA 18' 4" x 11' 1" (5.6m x 3.4m) Dual aspect room with solid wood flooring. Modern kitchen with breakfast bar, fitted with a range of eye level and base units, fan assisted electric oven and hob. Integrated fridge, freezer, washing machine and slim-line dishwasher.

BEDROOM 13' 5" x 7' 10" (4.1m x 2.4m) Double Bedroom

SHOWER ROOM Contemporary Shower Room with white fittings and heated towel rail.





TOTAL APPROX. FLOOR AREA 443 SQ.FT. (41.2 SQ.M)

Whilst every attempt has been made to ensure the accuracy of the floor plan contained here, measurements of doors, windows, rooms and any other items are approximate and no responsibility is taken for any error, omission, or mis-statement. This plan is for illustrative purposes only and should be used as such by any prospective purchaser. The services, systems and appliances shown have not been tested and no guarantee as to their operability or efficiency can be given

Made with Metropix ©2013

Martin & Co Uckfield

94c High Street • Uckfield • TN22 1PU
T: 01825 744033 • E: uckfield@martinco.com

01825 744033

<http://www.martinco.com>



Accuracy: References to the Tenure of a Property are based on information supplied by the Seller. The Agent has not had sight of the title documents. A Buyer is advised to obtain verification from their Solicitor. Items shown in photographs including but not limited to carpets, fixtures and fittings are not included unless specifically mentioned within the sales particulars. They may however be available by separate negotiation. Buyers must check the availability of any property and make an appointment to view before embarking on any journey to see a property. No person in the employment of the agent has any authority to make any representation about the property, and accordingly any information given is entirely without responsibility on the part of the agents, sellers(s) or lessors(s). Any property particulars are not an offer or contract, nor form part of one. **Sonic / Laser Tape:** Measurements taken using a sonic / laser tape measure may be subject to a small margin of error. **All Measurements:** All Measurements are Approximate. **Services Not tested:** The Agent has not tested any apparatus, equipment, fixtures and fittings or services and so cannot verify that they are in working order or fit for the purpose. A Buyer is advised to obtain verification from their Solicitor or Surveyor.