



Newstead Road, Weymouth, DT4 0AS
Asking Price Of £240,000 Freehold


MARTIN&CO

Weymouth, Dorset

3 Bedrooms, 1 Bathroom

Asking Price Of £240,000

- No onward chain
- Three bedrooms
- Lounge/diner
- Rear courtyard garden
- Modern fitted kitchen
- Short walk from Weymouth Marina



LOUNGE/DINER 20' 11" x 11' 10" (6.38m x 3.61m)

KITCHEN 15' x 9' 6" (4.57m x 2.9m)

BATHROOM

BEDROOM 15' 3" x 12' 11" (4.65m x 3.94m)

BEDROOM 10' 2" x 9' 7" (3.1m x 2.92m)

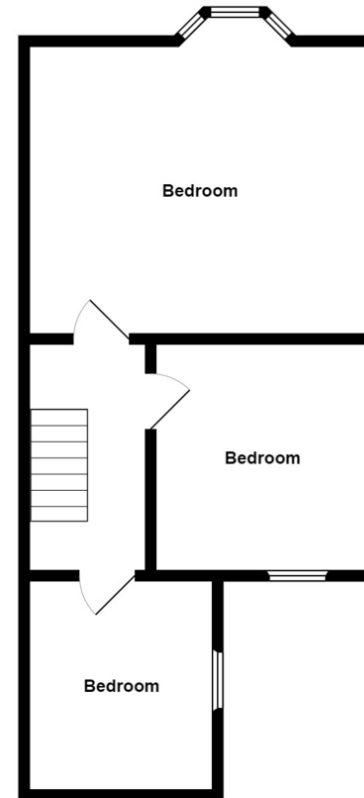
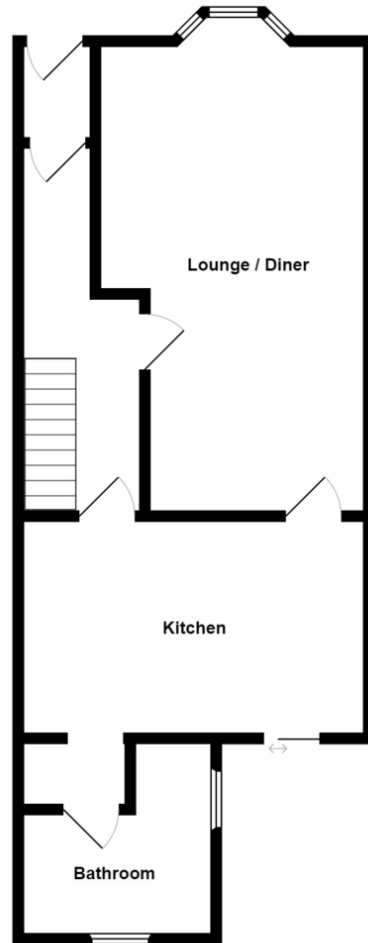
BEDROOM 9' 6" x 8' 2" (2.9m x 2.49m)

Score	Energy rating	Current	Potential
92+	A		
81-91	B		
69-80	C		78 C
55-68	D	61 D	
39-54	E		
21-38	F		
1-20	G		









Martin & Co Weymouth

2 St Thomas Street • Weymouth • DT4 8EW
T: 01305775504 • E: weymouth@martinco.com

01305775504

<http://www.martinco.com>



Accuracy: References to the Tenure of a Property are based on information supplied by the Seller. The Agent has not had sight of the title documents. A Buyer is advised to obtain verification from their Solicitor. Items shown in photographs including but not limited to carpets, fixtures and fittings are not included unless specifically mentioned within the sales particulars. They may however be available by separate negotiation. Buyers must check the availability of any property and make an appointment to view before embarking on any journey to see a property. No person in the employment of the agent has any authority to make any representation about the property, and accordingly any information given is entirely without responsibility on the part of the agents, sellers(s) or lessors(s). Any property particulars are not an offer or contract, nor form part of one. **Sonic / Laser Tape:** Measurements taken using a sonic / laser tape measure may be subject to a small margin of error. **All Measurements:** All Measurements are Approximate. **Services Not tested:** The Agent has not tested any apparatus, equipment, fixtures and fittings or services and so cannot verify that they are in working order or fit for the purpose. A Buyer is advised to obtain verification from their Solicitor or Surveyor.