

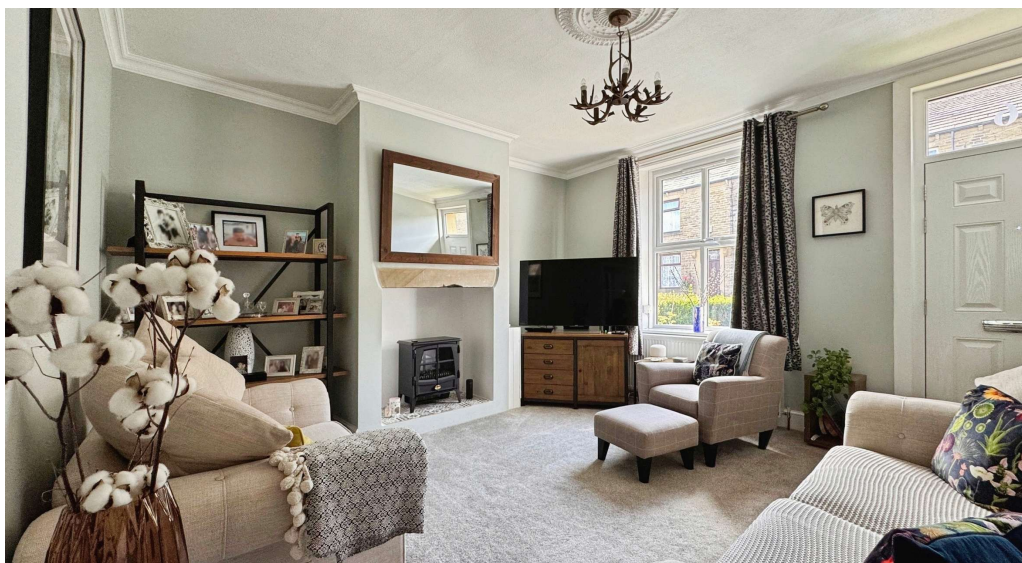


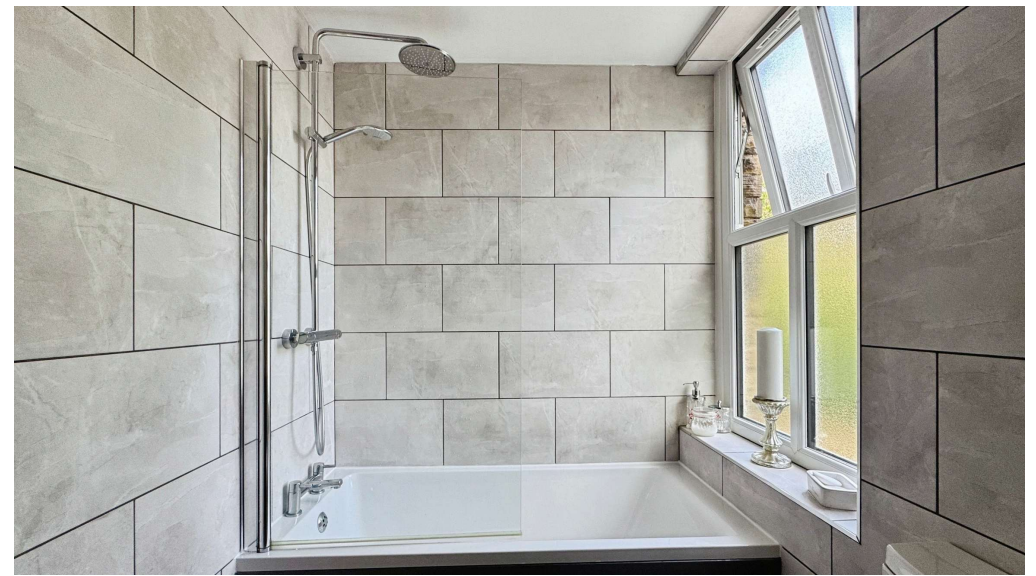

MARTIN&CO

16 Bryan Street, Farsley, Leeds, LS28 5JP

£1,200 PCM

This beautifully maintained two-bedroom terraced house in the heart of Farsley combines period charm with modern comforts, offering spacious living, excellent energy efficiency, and a picturesque village setting close to local amenities and transport links.





Mid
TERRACE



2



1



1



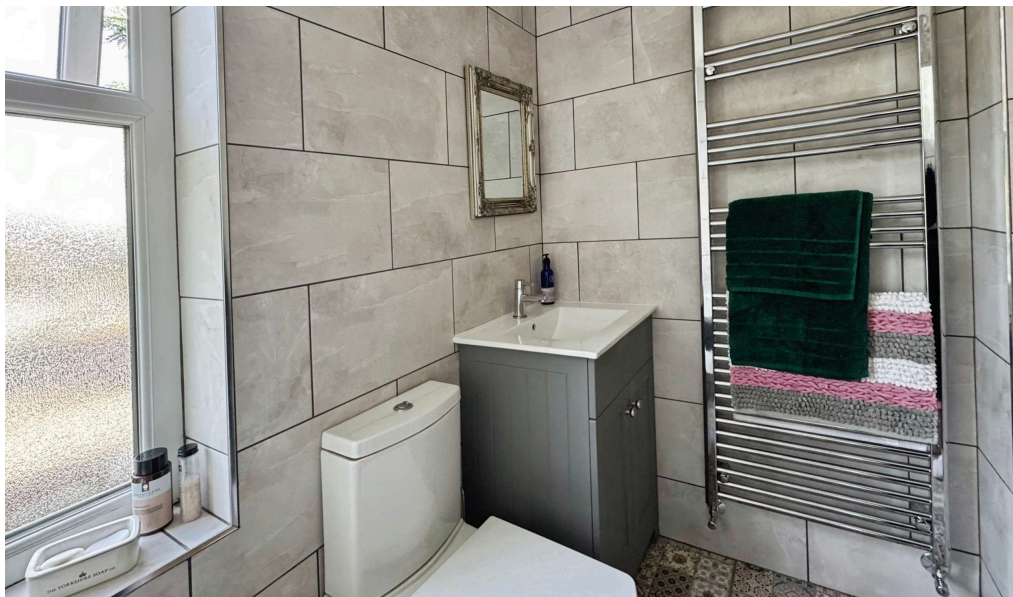
Street
PARKING



Band - B



EPC - C



We are delighted to offer to let this immaculate terraced house situated in the heart of the beautiful village of Farsley. Located in the sought-after peppercorn rent section, this historic property is thoughtfully maintained to preserve its traditional charm and character, making it a truly unique home within a picturesque setting.

Upon entering, the property welcomes you with a spacious reception room featuring an elegant fireplace, blending comfort and period detailing for an inviting space to relax or entertain. The kitchen is designed to make the most of natural light, complemented by a dedicated breakfast area that provides an ideal spot for morning coffee or informal dining.

The accommodation comprises two well-appointed bedrooms: one generous double with plenty of space for furnishings, and a cosy single bedroom, perfect for guests or a home office. The modern bathroom is fitted to an excellent standard and includes a heated towel rail for additional comfort.

With an EPC rating of C and council tax band B, the property offers excellent energy efficiency and cost-effective living. The location is especially ideal for professionals, offering easy access to public transport links, convenient local amenities, and a wealth of historical features nearby. Scenic walking and cycling routes are close at hand, allowing you to enjoy the vibrant local community and surrounding countryside.

This rare opportunity perfectly balances period features with modern living, making it an outstanding choice in one of Farsley's most desirable areas. Early viewing is highly recommended.

