



Built in between 1850 - 1900, This beautiful Three bedroom town house is situated in the heart of Farsley and benefits from stunning views.

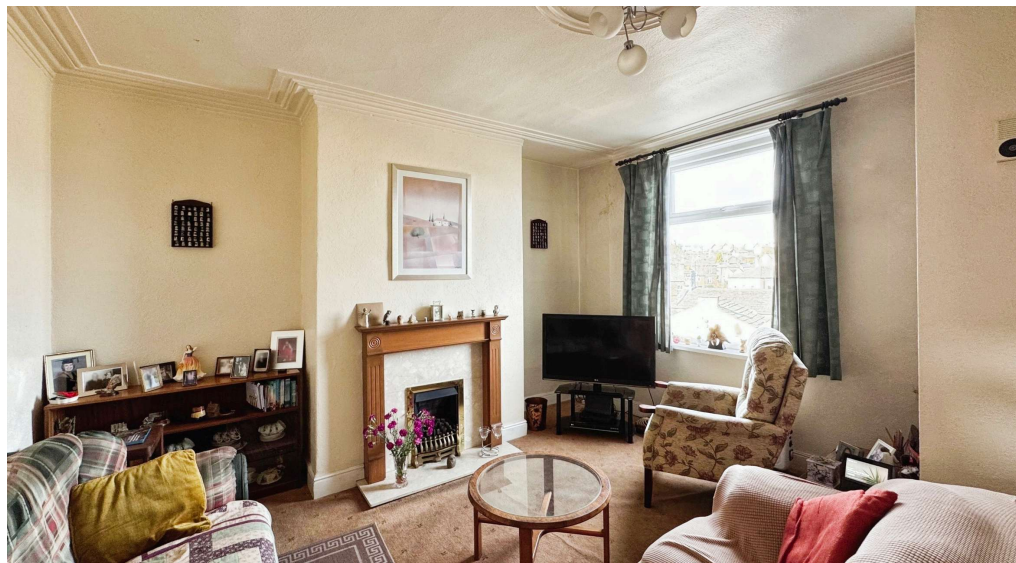


**MARTIN&CO**

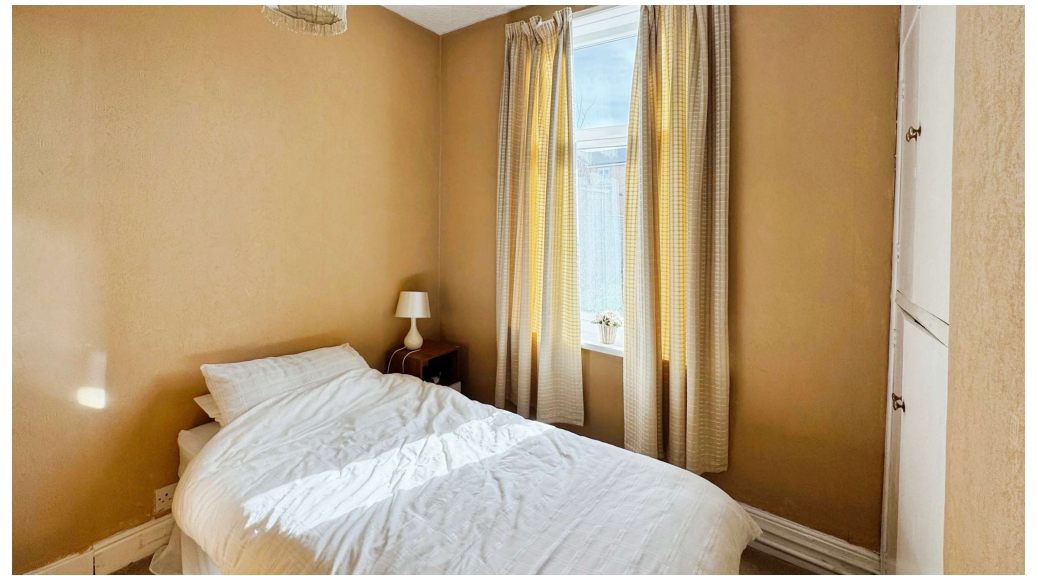
**10 High Street, Farsley, LS28 5LH**  
**Fixed price £199,995**



This three-bedroom terraced house, in need of modernisation, offers great potential for first-time buyers or investors, featuring a flexible layout with built-in wardrobes, a light-filled kitchen, and a spacious reception room, all in a sought-after location with convenient access to amenities and public transport.







Mid  
Terraced



3



1



1



Street  
Parking



Band - B



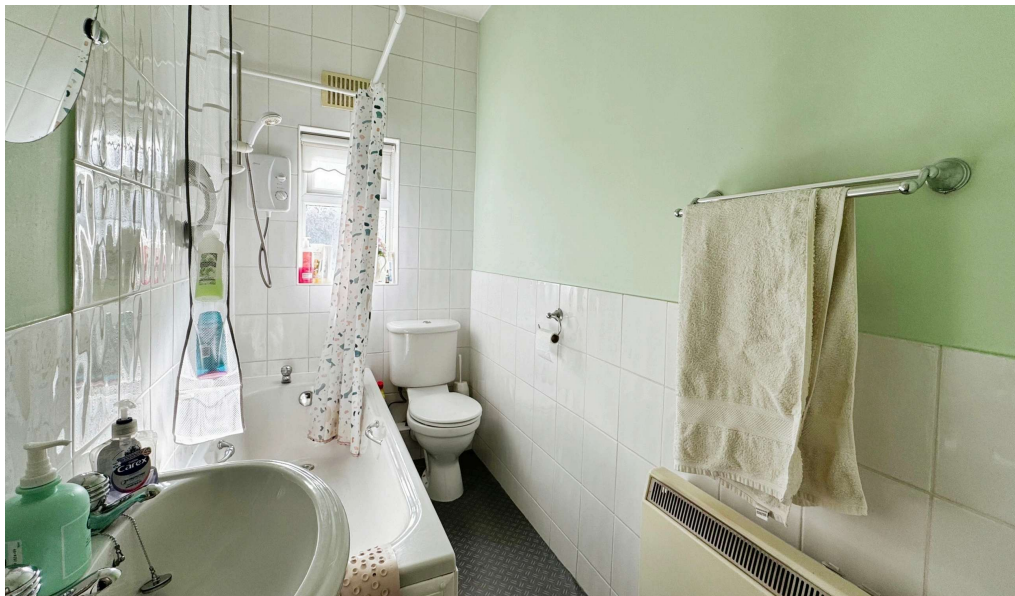
EPC - F



FREEHOLD



1298 sqft





This terraced house, currently listed for sale, offers a great opportunity for first-time buyers, investors, or families looking to make a home their own. Although the property is in need of modernisation, it holds strong potential with a layout that includes three bedrooms, a kitchen, and a reception room.

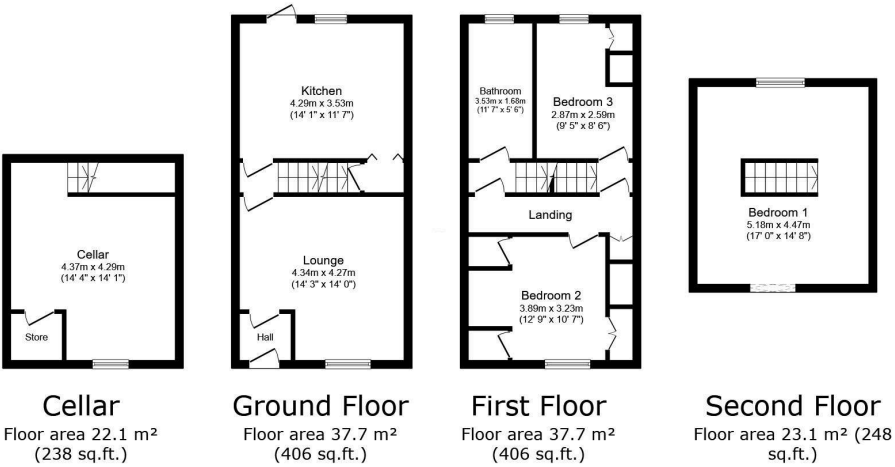
The house boasts three bedrooms in total - two doubles, both equipped with built-in wardrobes, and a single room. This accommodation is flexible enough to cater to a variety of needs, whether it be for a growing family or for designated home office space.

A standalone kitchen, flooded with natural light, provides a warm space for cooking and dining. Equipped with basic fittings, it awaits the touch of a discerning homeowner to truly bring it to life.

The single reception room marks a spacious area for relaxation and entertainment. With careful refurbishment, this space could indeed become the heart of the home.

The increasingly sought after village of Farsley is extremely popular with professionals, first time buyers and families alike and is easily accessed from the Ring Road (A6120). The canal, Millennium Trail and Rodley Nature Reserve can be found close by and offers a range of beautiful places where you can walk.

Just a short car ride away is the popular Owlcotes Centre at Pudsey offering an M&S store, Asda and New Pudsey train station. Farsley 'village' offers a selection of shops, restaurants, cafes and local pubs. The neighbouring villages of Calverley, Horsforth and Rodley are only a short distance away and offer a comprehensive range of facilities, restaurants, public houses and eateries.



TOTAL: 120.6 m<sup>2</sup> (1,298 sq.ft.)

This floor plan is for illustrative purposes only. It is not drawn to scale. Any measurements, floor areas (including any total floor area), openings and orientations are approximate. No details are guaranteed, they cannot be relied upon for any purpose and do not form any part of any agreement. No liability is