



This charming 3-bedroom terraced house, located in a sought-after area with nearby parks, offers a great opportunity for first-time buyers or investors



MARTIN & CO

10 Salisbury Place, Calverley, LS28 5PX

Guide price £230,000 - £240,000

This charming 3-bedroom terraced house, located in a sought-after area with nearby parks, offers a great opportunity for first-time buyers or investors to modernise and personalise, featuring a welcoming reception room, a functional kitchen, and energy-efficient benefits, all while maintaining affordability with a council tax band C.





Mid
Terraced

3

1

1

Road

Band - C

EPC - D

FREEHOLD

902 sqft



Welcome to this charming 3-bedroom terraced house! This charming property is currently listed for sale and eagerly awaits someone with a vision to bring it up to modern standards.

As you step inside, you will find a welcoming reception room that offers enough space for lounging and entertaining. Next, the kitchen, which while functional, could be transformed into a culinary haven with a little bit of TLC.

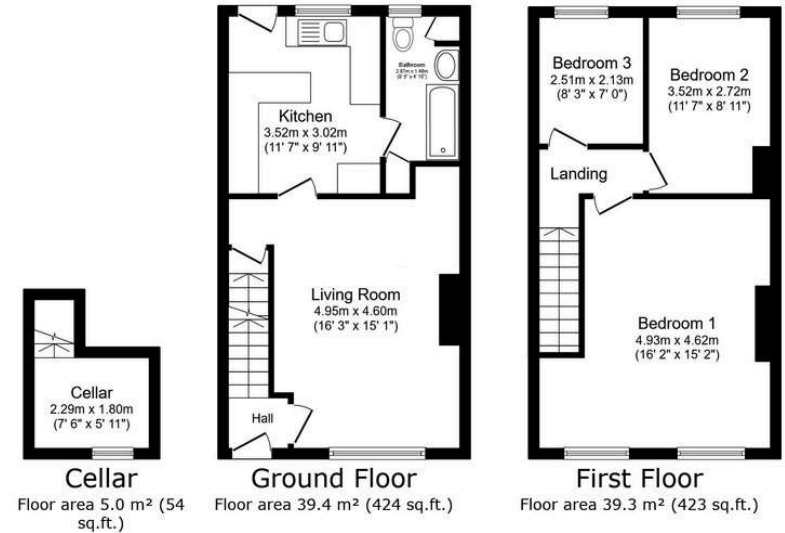
The property boasts three cosy bedrooms, making it an ideal choice for a growing family or a group of professionals. In addition, there is a single bathroom available that, like the rest of the house, could benefit from some modernisation.

Despite the need for some updates, the house is energy-efficient with an EPC rating of D, meaning it's cheaper than average to heat and light. The property also falls within council tax band C, which is a good middle ground for affordability.

One of the key advantages of this property is its location. It's situated in a sought-after area with nearby parks and walking routes, offering a perfect balance of city life and green space. It's perfect for those who love the outdoor lifestyle and for families wanting safe spaces for children to play.

This terraced house could be an excellent opportunity for first-time buyers looking for a home to put their personal stamp on. It could also be a great investment for those looking to expand their portfolio with a property in a desirable location.

Don't miss out on the chance to turn this house into a beautiful home or a profitable investment. It's a blank canvas waiting for the right buyer to bring it to life!



TOTAL: 83.8 m² (902 sq.ft.)

This floor plan is for illustration purposes only. It is not drawn to scale. Any measurements, floor areas (including any total floor area), openings and orientations are approximate. We make no guarantee, and accept no liability, for any purpose and do not accept any part of any agreement, including a contract for sale, or any other document.