



This immaculate two-bedroom flat, situated in a prime location with easy access to public transport, local amenities, and outdoor activities, offers energy efficiency and a unique opportunity for making it an ideal lifestyle choice for potential homeowners.



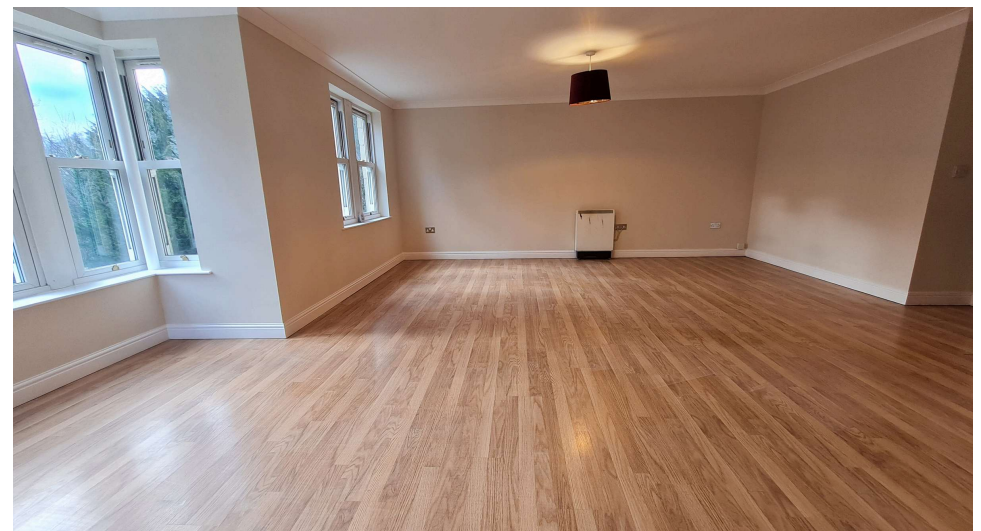
MARTIN & CO

Glenwood Villas, New Road Side, LS18 4JX

£250,000

This immaculate flat, currently listed for sale, is a truly exceptional property. Boasting two well-proportioned bedrooms and a singular, spacious reception room, it provides the perfect blend of comfort and style. The property is in pristine condition, reflecting the highest standards of craftsmanship and attention to detail.

The flat is energy efficient with an EPC rating of 'B' which ensures lower energy costs and contributes to a greener environment. The council tax band for this property is 'D', offering a reasonable rate for potential homeowners,





Apartment



2



1



2



Allocated
Parking



Council
Band - D



B



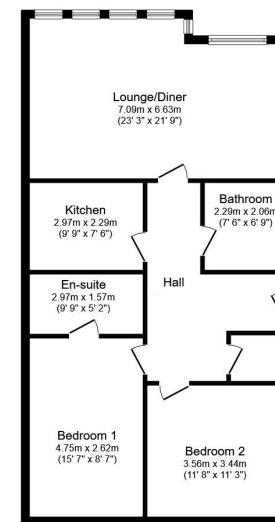
LEASEHOLD



The location of the property is one of its most alluring features. It offers easy access to public transport links, ensuring a smooth commute to work or leisure destinations. For families, the proximity to quality local schools is a significant plus. Everyday convenience is assured with a range of local amenities nearby, including shopping, dining and healthcare facilities.

For those who enjoy the outdoors, the property is situated close to numerous walking routes, perfect for a leisurely stroll or a brisk jog. The sought-after location adds to the overall appeal of the property, making it an attractive option for those seeking a blend of city living and natural beauty.

In summary, this flat is not just a property; it's a lifestyle choice. It offers potential homeowners the chance to live in an immaculate, well-located property, with the opportunity to add their own personal touch.



Floor Plan

Floor area 84.5 m² (910 sq.ft.)

TOTAL: 84.5 m² (910 sq.ft.)

This floor plan is for illustrative purposes only. It is not drawn to scale. Any measurements, floor areas (including any total floor area), openings and orientations are