

SOLD STC



Shorters Avenue, Yardley Wood

2 Bedrooms, 1 Bathroom, Apartment

Shared Ownership £75,000



Shorters Avenue, Yardley Wood

2 Bedrooms, 1 Bathroom

Shared Ownership £75,000

- 50% Shared Ownership
- Immaculate Two Bedroom Flat
- Open Plan Kitchen/Living Room
- Allocated Parking Space
- Council Tax Band B



OVERVIEW 50% Shared Ownership. Being an ideal first time purchase, an immaculately presented two bedroom first floor apartment with spacious open plan kitchen/living room, balcony with southerly aspect, modern bathroom and allocated parking space.

GROUND FLOOR Communal Entrance Hall with stairs to the upper floors.

FIRST FLOOR

APARTMENT 11

ENTRANCE HALL with radiator, security entry phone system, and both cloaks and airing cupboards off.

OPEN PLAN KITCHEN/BREAKFAST ROOM 22' 3" overall x 12' 2" (6.80m x 3.72m) being fitted with a comprehensive range of matching base and wall units with roll edge worksurfaces and tiled splashbacks having inset single drainer sink unit and built in four ring gas hob unit with oven under and extractor hood over. There is plumbing for both dishwasher and washing machine, radiator three double glazed windows and double glazed french door to:

BALCONY with southerly aspect.

BEDROOM ONE 19' 2" x 8' 7" (5.85m x 2.64m) with double glazed side window and radiator.

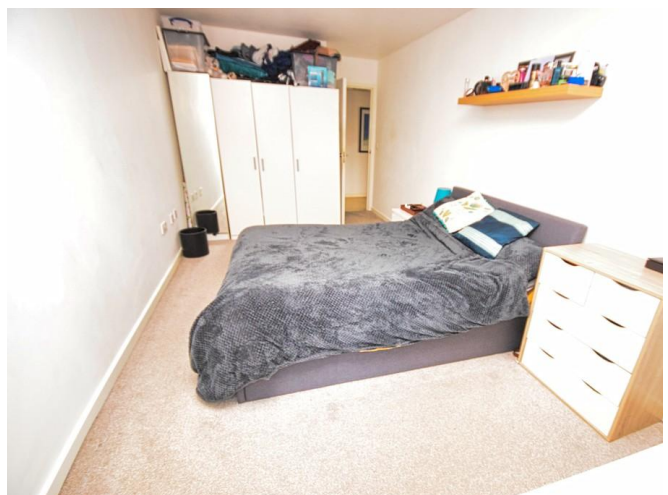
BEDROOM TWO 18' 0" x 9' 1" (5.51m x 2.79m) with double glazed window and radiator.

MODERN BATHROOM having panelled bath with electric shower over,, pedestal wash hand basin, low level w.c., part tiled walls and extractor fan.

ALLOCATED PARKING SPACE



TENURE We are advised by the vendor that the property is LEASEHOLD having approximately 81 years unexpired with monthly rent, service charge and ground rent totalling £298.19 (subject to verification by your solicitor).





%epcGraph_c_1_210%





For Illustrative Purposes Only Not to Scale



Martin & Co Solihull

165 Stratford Road • Shirley • Solihull • B90 3AX
T: • E: solihull@martinco.com

<http://www.martinco.com>



Accuracy: References to the Tenure of a Property are based on information supplied by the Seller. The Agent has not had sight of the title documents. A Buyer is advised to obtain verification from their Solicitor. Items shown in photographs including but not limited to carpets, fixtures and fittings are not included unless specifically mentioned within the sales particulars. They may however be available by separate negotiation. Buyers must check the availability of any property and make an appointment to view before embarking on any journey to see a property. No person in the employment of the agent has any authority to make any representation about the property, and accordingly any information given is entirely without responsibility on the part of the agents, sellers(s) or lessors(s). Any property particulars are not an offer or contract, nor for part of one. **Sonic / laser Tape:** Measurements taken using a sonic / laser tape measure may be subject to a small margin of error. **All Measurements:** All Measurements are Approximate. **Services Not tested:** The Agent has not tested any apparatus, equipment, fixtures and fittings or services and so cannot verify that they are in working order or fit for the purpose. A Buyer is advised to obtain verification from their Solicitor or Surveyor.