

ON HOLD



Merevale Way, Stenson Fields
Asking Price Of £290,000


MARTIN&CO

Merevale Way, Stenson Fields

Asking Price Of £290,000

- Attractively presented detached home
- Popular location within Stenson Fields
- Master bedroom with dressing area and en-suite
- Impressive dining kitchen
- Airy lounge with bay window

**ATTRACTIVELY PRESENTED
DETACHED HOME -THREE
BEDROOMS, MASTER WITH EN-
SUITE SHOWER ROOM - EVER
POPULAR LOCATION WITHIN
STENSON FIELDS. Modern detached**

ACCOMMODATION

GROUND FLOOR

UTILITY ROOM With plumbing for washing machine, work surface, wall mounted central heating boiler. Doors leading to rear garden and guest cloaks.

STUDY 9' 7" x 8' 6" (2.94m x 2.60m) Recently converted garage space, now provides useful study/playroom accommodation.

LIVING ROOM 16' 2" x 13' 7" (4.95m x 4.15m) With uPVC framed double glazed bay window to the front elevation.



Central heating radiator. Useful understairs storage cupboard. Door leading to the study.

KITCHEN DINER 17' 3" x 12' 7" (5.28m x 3.84m) With a range of units at eye and base level providing work surface, storage and appliance space. Integrated fittings include a four ring hob with extractor over, electric oven, fridge/freezer and dishwasher. uPVC framed double glazed doors open from the dining area to the rear garden. Central heating radiator.

FIRST FLOOR

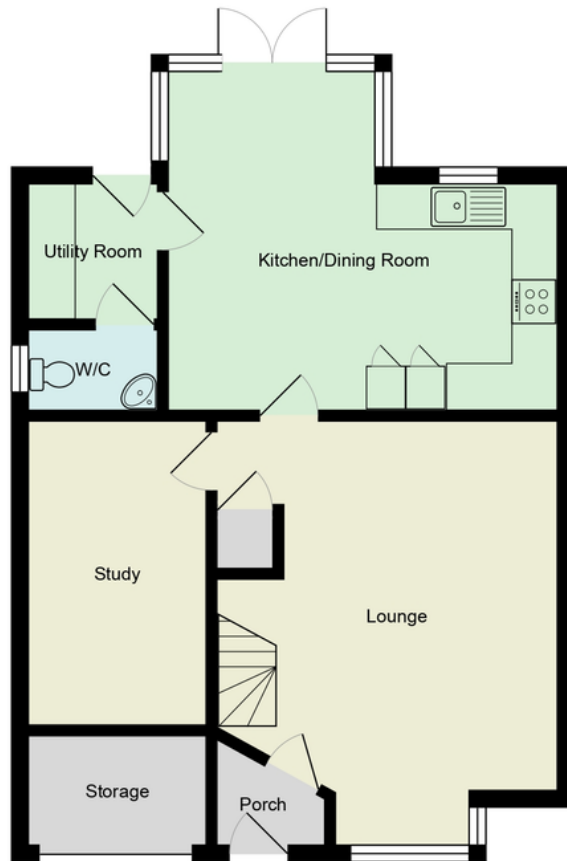
MASTER BEDROOM 19' 1" x 8' 11" (5.84m x 2.72m) With uPVC framed double glazed window to the front elevation. Central heating radiator. Dressing area with door leading to the ensuite facility.

BEDROOM TWO 10' 2" x 11' 0" (3.12m x 3.37m) With uPVC framed double glazed window to the front elevation. central heating radiator. Fitted wardrobe.

BEDROOM THREE 10' 4" x 6' 5" (3.17m x 1.97m) With uPVC framed double glazed window to the rear elevation. Central heating radiator.

BATHROOM Comprising a suite in white of panelled bath (With), wash hand basin and W.C. Opaque uPVC framed double glazed window. central heating radiator.





Floorplan is for illustrative purposes only and is not to scale.

Martin & Co Derby

15 St James Street • Derby • DE1 1RF
 T: 01332 650068 • E: derby@martinco.com

01332 650068

<http://www.martinco.com>



Accuracy: References to the Tenure of a Property are based on information supplied by the Seller. The Agent has not had sight of the title documents. A Buyer is advised to obtain verification from their Solicitor. Items shown in photographs including but not limited to carpets, fixtures and fittings are not included unless specifically mentioned within the sales particulars. They may however be available by separate negotiation. Buyers must check the availability of any property and make an appointment to view before embarking on any journey to see a property. No person in the employment of the agent has any authority to make any representation about the property, and accordingly any information given is entirely without responsibility on the part of the agents, sellers(s) or lessors(s). Any property particulars are not an offer or contract, nor form part of one. **Sonic / Laser Tape:** Measurements taken using a sonic / laser tape measure may be subject to a small margin of error. **All Measurements:** All Measurements are Approximate. **Services Not tested:** The Agent has not tested any apparatus, equipment, fixtures and fittings or services and so cannot verify that they are in working order or fit for the purpose. A Buyer is advised to obtain verification from their Solicitor or Surveyor.