

**TO LET**



**Brierley Road, Grimethorpe**  
**£750 pcm**

  
**MARTIN&CO**

## Brierley Road, Grimethorpe

Mid Terraced House,  
3 bedroom, 1 bathroom

£750 pcm

Date available: 27th April 2026

Deposit: £865.38

Unfurnished

Council Tax band: A

- Three Bedrooms
- Close to Local Amenities
- Downstairs Bathroom
- Gas Central Heating
- Enclosed Rear Garden
- New Carpets
- Freshly Painted

A well presented three-bedroom terraced property in popular area of Grimethorpe.

Freshly painted with new carpets giving a clean and modern feel. The property comprises of a downstairs bathroom, spacious living area and a functional kitchen.

Upstairs offers three well-proportioned bedrooms providing comfortable living space.

To the rear, the property features a private enclosed

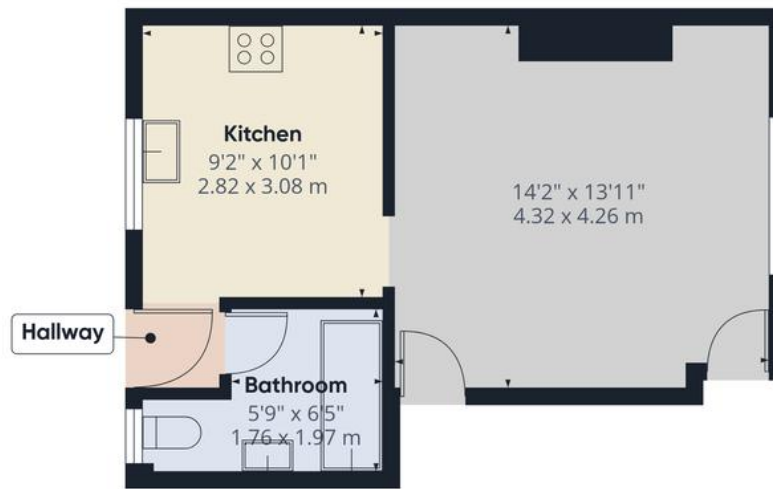


garden.

Located close to local amenities, this property is ideally situated so don't miss out!.



Score	Energy rating	Current	Potential
92+	A		
81-91	B		88 B
69-80	C		
55-68	D		
39-54	E	44 E	
21-38	F		



Ground Floor



Approximate total area<sup>(1)</sup>  
674 ft<sup>2</sup>  
62.6 m<sup>2</sup>

(1) Excluding balconies and terraces

Calculations reference the RICS IPMS 3C standard. Measurements are

## Martin & Co Rotherham

5 Worry Goose Lane • Whiston • Rotherham • S60 4AA  
T: 01709 544982 • E: rotherham@martinco.com

# 01709 544982

<http://www.martinco.com>



**Accuracy:** References to the Tenure of a Property are based on information supplied by the Seller. The Agent has not had sight of the title documents. A Buyer is advised to obtain verification from their Solicitor. Items shown in photographs including but not limited to carpets, fixtures and fittings are not included unless specifically mentioned within the sales particulars. They may however be available by separate negotiation. Buyers must check the availability of any property and make an appointment to view before embarking on any journey to see a property. No person in the employment of the agent has any authority to make any representation about the property, and accordingly any information given is entirely without responsibility on the part of the agents, sellers(s) or lessors(s). Any property particulars are not an offer or contract, nor form part of one. **Sonic / Laser Tape:** Measurements taken using a sonic / laser tape measure may be subject to a small margin of error. **All Measurements:** All Measurements are Approximate. **Services Not tested:** The Agent has not tested any apparatus, equipment, fixtures and fittings or services and so cannot verify that they are in working order or fit for the purpose. A Buyer is advised to obtain verification from their Solicitor or Surveyor.