

FOR SALE



Cotswold Crescent, Whiston
Asking Price Of £200,000


MARTIN & CO



Cotswold Crescent, Whiston

2 Bedrooms, 1 Bathroom

Asking Price Of £200,000

- Bungalow
- Semi detached
- Two bedrooms
- Drive and garage
- Popular location

Nestled in the desirable area of Whiston, this charming two-bedroom semi-detached bungalow promises comfort and convenience. Ideal for a range of buyers, the property is perfectly positioned with easy access to local amenities, public transport, and major commuting routes.

The home features a welcoming kitchen equipped with beech-effect wall and base units, creating a warm and inviting atmosphere. Adjacent to the kitchen, the spacious lounge/dining area includes a gas fire, making it the perfect spot for relaxation and entertaining guests.

Both bedrooms are well-appointed with fitted wardrobes, offering ample storage space. The family bathroom is neatly maintained, supporting a functional and practical living arrangement.

Externally, the property boasts low-maintenance gardens at both the front and rear, providing a peaceful outdoor retreat. Additional benefits include a private drive, a covered carport, and a single garage, all adding to the home's appeal.

This bungalow is not just a house but a potential home for someone who values peace, accessibility,



and low-maintenance living.

KITCHEN With a range of fitted wall and base units in Beech effect. Base units are set beneath contrasting worktops which include a single bowl sink, gas hob with extractor above, eye level oven, plumbing for washing machine, integrated fridge, integrated freezer, tiled walls, front facing window and side facing entrance door.

LOUNGE / DINING ROOM A generous size reception room with wall mounted gas fire and front facing bay window.

INNER HALL With access to the two bedrooms, bathroom and side facing entrance door.

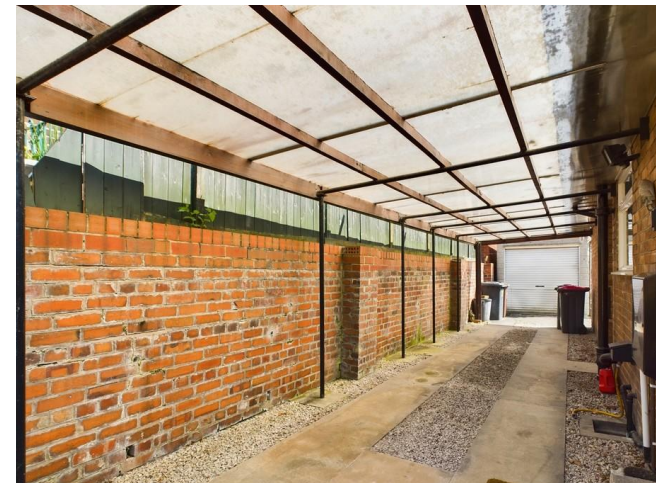
BEDROOM ONE With coving to the ceiling, fitted wardrobes to one wall and rear facing window.

BEDROOM TWO With fitted wardrobes to one wall

with rear facing window.

BATHROOM With a coloured three piece suite which comprises of a low flush w.c, wash hand basin, bath with shower set over, tiled walls and side facing window.

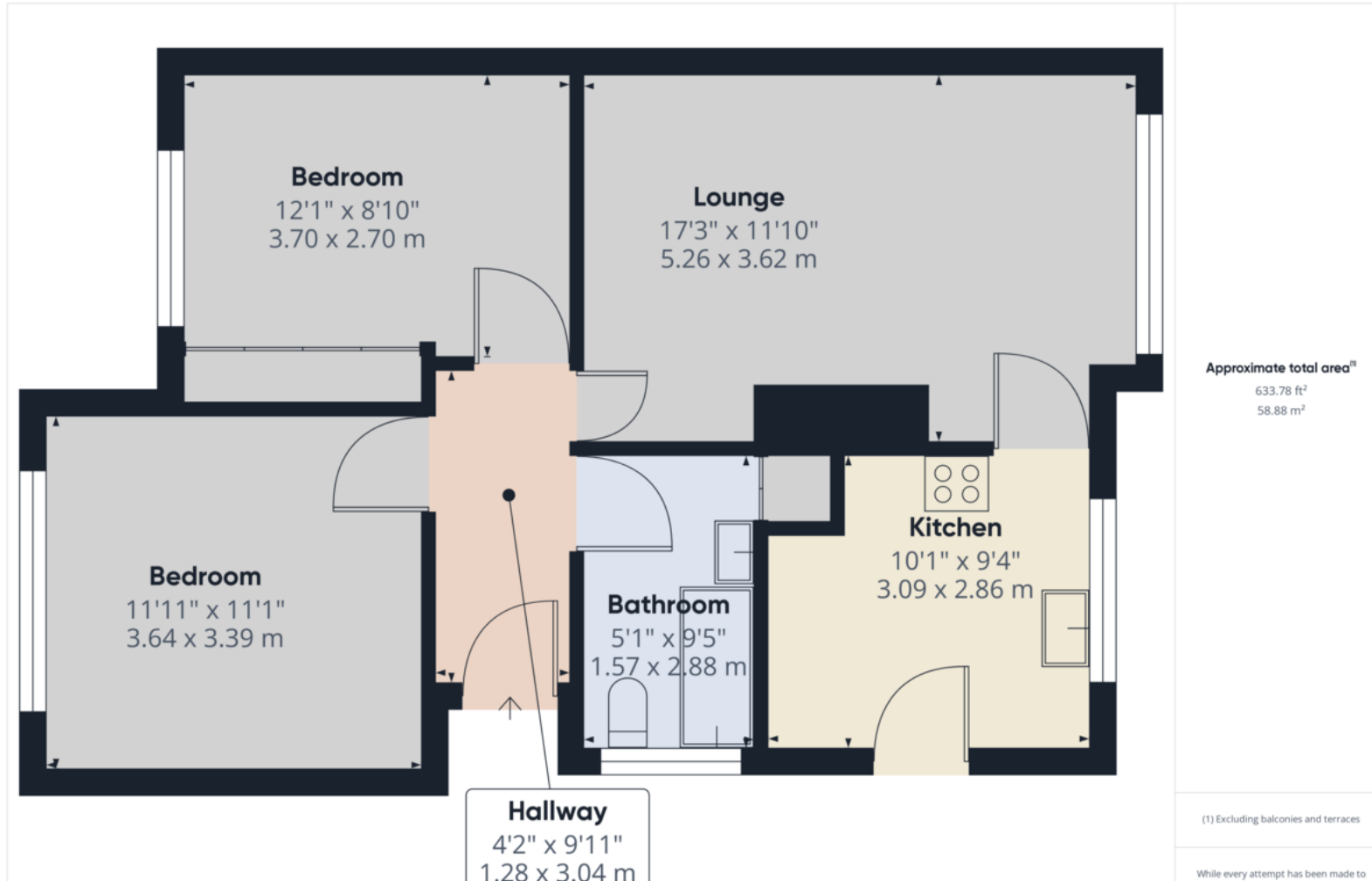
OUTSIDE There is a pebbled garden to the front. Drive to the side providing off road parking with carport and single garage with electric door. To the rear is a pebbled and patio garden with greenhouse.





Score	Energy rating	Current	Potential
92+	A		
81-91	B		86 B
69-80	C	69 C	
55-68	D		
39-54	E		
21-38	F		
1-20	G		





Martin & Co Rotherham

5 Worry Goose Lane • Whiston • Rotherham • S60 4AA
T: 01709 544982 • E: rotherham@martinco.com

01709 544982

<http://www.martinco.com>



Accuracy: References to the Tenure of a Property are based on information supplied by the Seller. The Agent has not had sight of the title documents. A Buyer is advised to obtain verification from their Solicitor. Items shown in photographs including but not limited to carpets, fixtures and fittings are not included unless specifically mentioned within the sales particulars. They may however be available by separate negotiation. Buyers must check the availability of any property and make an appointment to view before embarking on any journey to see a property. No person in the employment of the agent has any authority to make any representation about the property, and accordingly any information given is entirely without responsibility on the part of the agents, sellers(s) or lessors(s). Any property particulars are not an offer or contract, nor form part of one. **Sonic / Laser Tape:** Measurements taken using a sonic / laser tape measure may be subject to a small margin of error. **All Measurements:** All Measurements are Approximate. **Services Not tested:** The Agent has not tested any apparatus, equipment, fixtures and fittings or services and so cannot verify that they are in working order or fit for the purpose. A Buyer is advised to obtain verification from their Solicitor or Surveyor.