

TO LET



Ridgeway, East Herringthorpe
£780 pcm


MARTIN&CO

Ridgeway, East Herringthorpe

Semi Detached house,
3 bedroom, 1 bathroom

£780 pcm

Date available: 14th August 2026

Deposit: £900

Unfurnished

Council Tax band: A

- Three Bedrooms
- Utility Room
- Kitchen Diner
- Close to Local Amenities
- Available Now
- Enclosed Rear Garden
-

Lovely three bedroomed family home in East Herringthorpe, available to move straight into. Close to all local amenities as well as transport links, this property has plenty to offer.

Briefly the property comprises of a front facing living room with a bay window and quality grey carpets, leading to the rear of the property that has a utility space, with the back door leading out to the rear garden. The kitchen diner is also to the rear, overlooking the garden.

Upstairs there are two double bedrooms and a further



single. The main bedroom to the front has fitted wardrobes and the second bedroom to the rear also has a storage cupboard.

The bathroom is separated between two rooms, with the toilet in a separate room. Then the main bathroom contains the sink and bath with overhead shower.

Externally the property has an enclosed rear garden, and also a front garden. Parking is on street to the side or front of the property.

Please register your interest today!

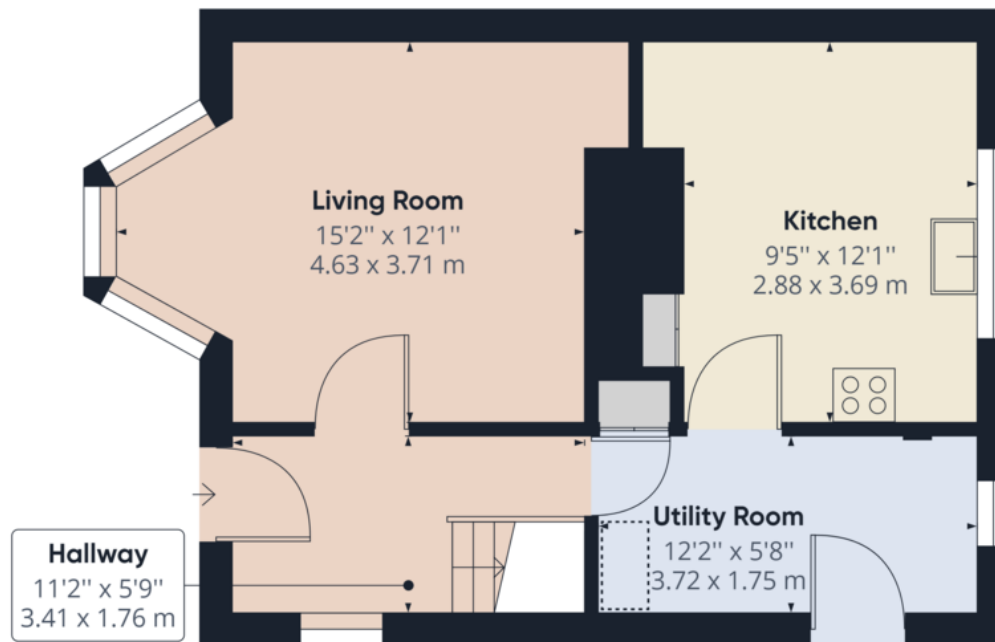


Energy Efficiency Rating		Current	Potential
Very energy efficient - lower running costs			
(92-100)	A		
(81-91)	B		
(69-80)	C		
(55-68)	D		
(39-54)	E		
(21-38)	F		
(1-20)	G		
Not energy efficient - higher running costs			
England, Scotland & Wales		EU Directive 2002/91/EC	

Address:
Ridgeway, EastHenington

Environmental Impact (CO ₂) Rating		Current	Potential
Very environmentally friendly - lower CO ₂ emissions			
(92-100)	A		
(81-91)	B		
(69-80)	C		
(55-68)	D		
(39-54)	E		
(21-38)	F		
(1-20)	G		
Not environmentally friendly - higher CO ₂ emissions			
England, Scotland & Wales		EU Directive 2002/91/EC	





Approximate total area⁽¹⁾
 440.22 ft²
 40.90 m²

Reduced headroom
 3.95 ft²
 0.37 m²

(1) Excluding balconies and terraces

☐ Reduced headroom
 (below 1.5m/4.92ft)

While every attempt has been made to

Martin & Co Rotherham

5 Worry Goose Lane • Whiston • Rotherham • S60 4AA
 T: 01709 544982 • E: rotherham@martinco.com

01709 544982

<http://www.martinco.com>



Accuracy: References to the Tenure of a Property are based on information supplied by the Seller. The Agent has not had sight of the title documents. A Buyer is advised to obtain verification from their Solicitor. Items shown in photographs including but not limited to carpets, fixtures and fittings are not included unless specifically mentioned within the sales particulars. They may however be available by separate negotiation. Buyers must check the availability of any property and make an appointment to view before embarking on any journey to see a property. No person in the employment of the agent has any authority to make any representation about the property, and accordingly any information given is entirely without responsibility on the part of the agents, sellers(s) or lessors(s). Any property particulars are not an offer or contract, nor form part of one. **Sonic / Laser Tape:** Measurements taken using a sonic / laser tape measure may be subject to a small margin of error. **All Measurements:** All Measurements are Approximate. **Services Not tested:** The Agent has not tested any apparatus, equipment, fixtures and fittings or services and so cannot verify that they are in working order or fit for the purpose. A Buyer is advised to obtain verification from their Solicitor or Surveyor.

