

**FOR SALE**



**Baddesley Road, Changers Ford**

**2 Bedrooms, 2 Bathroom, Apartment**

**Asking Price Of £245,000**



## Baddesley Road, Chandlers Ford

2 Bedrooms, 2 Bathroom

Asking Price Of £245,000

- 2 Double bedrooms
- 2 Bathrooms
- Juliet balcony
- Allocated parking
- Communal garden



A spacious first floor apartment overlooking enclosed gardens within Thornden School catchment.

**ENTRANCE** A well presented communal area.

**HALL** 13'10" (3.96m) x 4'05" (1.21m) Includes intercom, BT point.

**KITCHEN** 10'08" (3.04m) x 9'09" (2.74m) Includes a modern range of wall and base units, Gas hob and built in electric oven, integrated dishwasher and fridge freezer, space for washing machine.

**LOUNGE** 16'03" (4.87m) x 10'8" (3.04m) With Juliet balcony, TV aerial, BT point and Sky Point.

**BATHROOM** 7'03" (2.13m) x 6'01" (1.82m) Comprises a white suite with low level WC, wash basin, panel bath, monotap and shower hose. Includes heated towel rail and shaver socket.

**BEDROOM 1** 18'01" (5.48m) x 8'10" (2.43) Double room with fitted wardrobes rear aspect.

**ENSUITE** 6'08" (1.82m) x 5' (1.52m)

**BEDROOM 2** 9'08" (2.74m) x 9'03" (2.74m) Airing cupboard.

**OUTSIDE**

Communal gardens

**PARKING**

Allocated space

**OTHER INFORMATION.**





Telephone points: Hall, Lounge, Bedrooms 1, 2 LEASE YEARS REMAINING 981

Sky Point Yes SERVICE CHARGE PA. £1608.58

Terrestrial TV aerial Lounge, Bedrooms 1, 2 GROUND RENT PA. £200

Broadband - subject to connection

Smoke alarms Yes

Security Alarm No

\* GAS CENTRAL HEATING

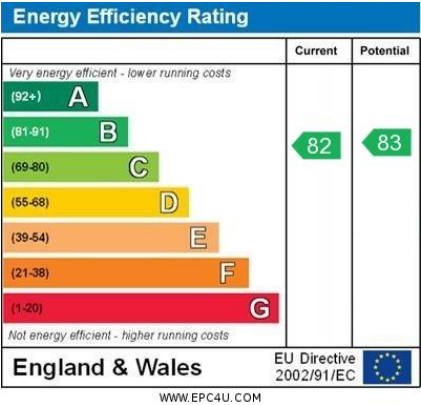
\* DOUBLE GLAZED

LOCAL AUTHORITY INFORMATION

TEST VALLEY COUNCIL BAND C

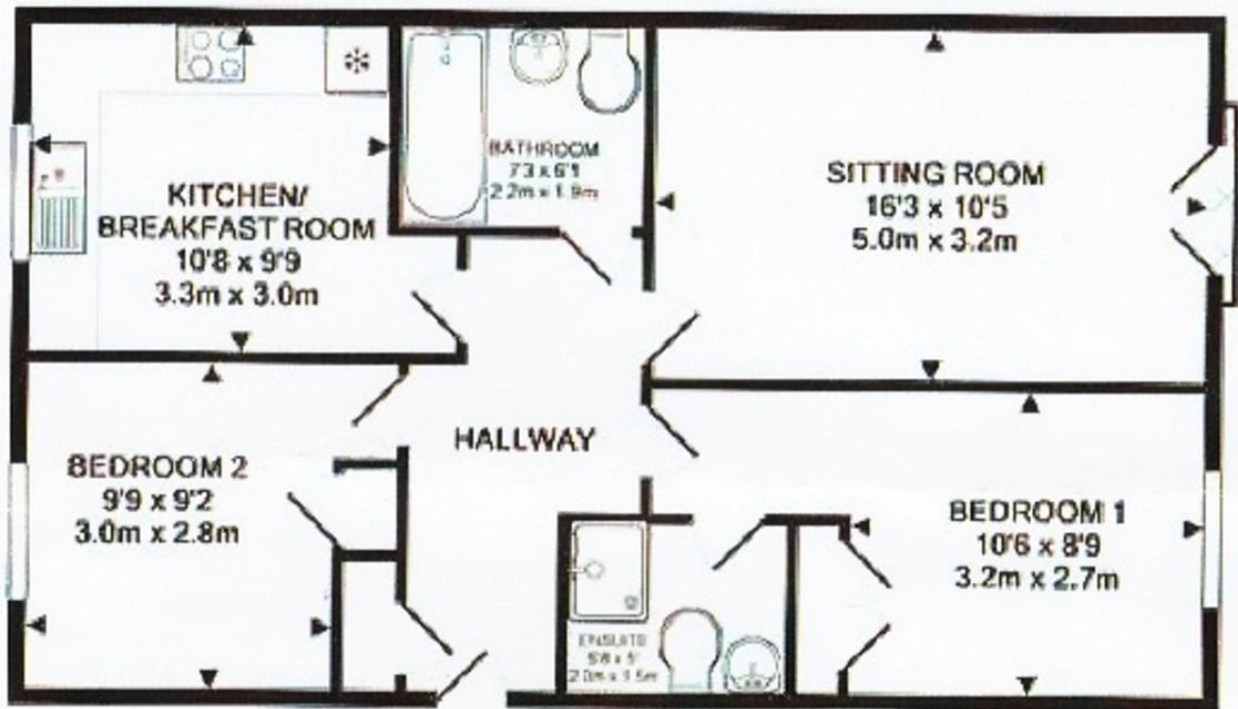
LEASEHOLD







## FLOOR PLAN:



### Martin & Co Southampton City

46 London Road • Southampton • SO15 2AH  
T: 02380 988881 • E: southamptoncity@martinco.com

**02380 988881**

<http://www.martinco.com>



**Accuracy:** References to the Tenure of a Property are based on information supplied by the Seller. The Agent has not had sight of the title documents. A Buyer is advised to obtain verification from their Solicitor. Items shown in photographs including but not limited to carpets, fixtures and fittings are not included unless specifically mentioned within the sales particulars. They may however be available by separate negotiation. Buyers must check the availability of any property and make an appointment to view before embarking on any journey to see a property. No person in the employment of the agent has any authority to make any representation about the property, and accordingly any information given is entirely without responsibility on the part of the agents, sellers(s) or lessors(s). Any property particulars are not an offer or contract, nor for m part of one. **Sonic / laser Tape:** Measurements taken using a sonic / laser tape measure may be subject to a small margin of error. **All Measurements:** All Measurements are Approximate. **Services Not tested:** The Agent has not tested any apparatus, equipment, fixtures and fittings or services and so cannot verify that they are in working order or fit for the purpose. A Buyer is advised to obtain verification from their Solicitor or Surveyor.