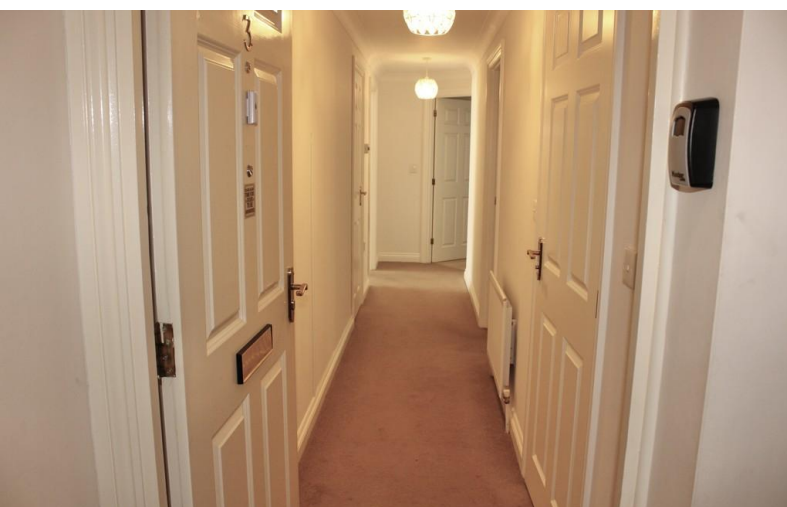


**TO LET**



**Romsey Road, Eastleigh**

**2 Bedrooms, 2 Bathroom, Apartment**

**£1,200 pcm**



## Romsey Road, Eastleigh

Apartment,  
2 bedroom, 2 bathroom

£1,200 pcm

Date available: 15th September 2025

Deposit: £1,384.61

Unfurnished

Council Tax band: C

- Available 15th September 2025
- Ensuite to master
- Appliances included
- Neutral decor
- Communal garden area
- Allocated Parking
- Energy Performance Rating C

A well presented, 2 bedroom property on the ground floor, within walking distance of Eastleigh Town.

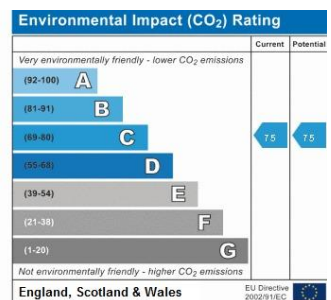
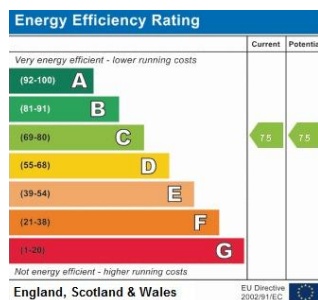
ENTRANCE Communal with intercom.

HALL 6.87m x 0.91m Neutral décor and carpets, storage cupboard.

BATHROOM 2.49m x 1.60m White suite comprising of panel bath, taps with shower hose, hand basin and low level WC.

BEDROOM 1 Double room with fitted wardrobes and mirrored cupboard. Window to side aspect. (Bed not included)

ENSUITE ROOM 2.3m x 1.19m Low level WC, hand basin, double shower cubicle.







**BEDROOM 2** 4.21m x 2.26m Neutral décor and carpets, built in wardrobes. Window to side aspect.

**KITCHEN** 3.09m x 1.99m Good range of wall and base units, Electric induction hob and oven. Fridge/freezer, washing machine and tumble dryer.

**LOUNGE** 5.30m x 5.16m Good sized living area with neutral walls and carpets, with a dining area for table and chairs 2.77m x 1.87m with patio door leading to rear communal garden.

**OUTSIDE** Own patio, communal garden, allocated parking. There is one visitor space for all but parking permits may be issued from the council for additional on road parking if necessary.

#### OTHER INFORMATION.

Telephone points: Yes

Sky Point No

Terrestrial TV aerial Yes

Broadband - subject to connection

Smoke alarms Yes

Security Alarm No

\* GAS CENTRAL HEATING

\* DOUBLE GLAZED

#### LOCAL AUTHORITY INFORMATION

EASTLEIGH BOROUGH COUNCIL BAND C

Deposit - £1,384.61



---

## Martin & Co Chandler

46 London Road • • Southampton • SO15 2AH

T: 02380 390012 • E: [chandlersford@martinco.com](mailto:chandlersford@martinco.com) <http://www.martinco.com>

# 02380 390012



**Accuracy:** References to the Tenure of a Property are based on information supplied by the Seller. The Agent has not had sight of the title documents. A Buyer is advised to obtain verification from their Solicitor. Items shown in photographs including but not limited to carpets, fixtures and fittings are not included unless specifically mentioned within the sales particulars. They may however be available by separate negotiation. Buyers must check the availability of any property and make an appointment to view before embarking on any journey to see a property. No person in the employment of the agent has any authority to make any representation about the property, and accordingly any information given is entirely without responsibility on the part of the agents, sellers(s) or lessors(s). Any property particulars are not an offer or contract, nor for part of one. **Sonic / laser Tape:** Measurements taken using a sonic / laser tape measure may be subject to a small margin of error. **All Measurements:** All Measurements are Approximate. **Services Not tested:** The Agent has not tested any apparatus, equipment, fixtures and fittings or services and so cannot verify that they are in working order or fit for the purpose. A Buyer is advised to obtain verification from their Solicitor or Surveyor.