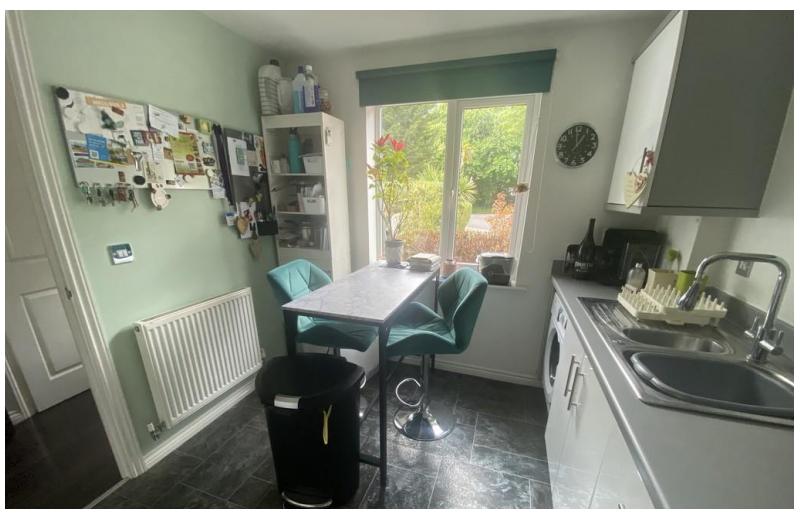


TO LET



Sand Martin Close, Eastleigh

3 Bedrooms, 2 Bathroom, Semi-Detached House

£1,400 pcm



Sand Martin Close, Eastleigh

Semi-Detached House,
3 bedroom, 2 bathroom

£1,400 pcm

Date available: 12th June 2026

Deposit: £1,442.30

Unfurnished

Council Tax band: C

- Available 22nd June 2026
- Neutral decor throughout
- White goods included
- Gas Central Heating
- Ensuite
- Garden
- Crestwood School catchment

Lovely 3 bedroom property in popular location within Crestwood primary school catchment area. With the benefit of cloakroom ensuite and good sized garden.

KITCHEN

LOUNGE WITH FRENCH DOORS TO PATIO

CLOAKROOM

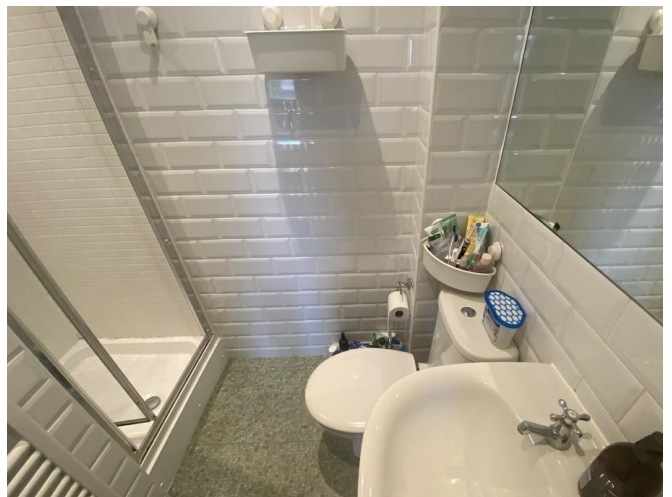
DOUBLE BEDROOM WITH ENSUITE

LARGE SINGLE BEDROOM

SINGLE BEDROOM

ALLOCATED PARKING

Score	Energy rating	Current	Potential
92+	A		
81-91	B		90 B
69-80	C	78 C	
55-68	D		
39-54	E		
21-38	F		
1-20	G		



Martin & Co Chandler

46 London Road • Southampton • SO15 2AH

T: 02380 390012 • E: chandlersford@martinco.com <http://www.martinco.com>

02380 390012



Accuracy: References to the Tenure of a Property are based on information supplied by the Seller. The Agent has not had sight of the title documents. A Buyer is advised to obtain verification from their Solicitor. Items shown in photographs including but not limited to carpets, fixtures and fittings are not included unless specifically mentioned within the sales particulars. They may however be available by separate negotiation. Buyers must check the availability of any property and make an appointment to view before embarking on any journey to see a property. No person in the employment of the agent has any authority to make any representation about the property, and accordingly any information given is entirely without responsibility on the part of the agents, sellers(s) or lessors(s). Any property particulars are not an offer or contract, nor for part of one. **Sonic / laser Tape:** Measurements taken using a sonic / laser tape measure may be subject to a small margin of error. **All Measurements:** All Measurements are Approximate. **Services Not tested:** The Agent has not tested any apparatus, equipment, fixtures and fittings or services and so cannot verify that they are in working order or fit for the purpose. A Buyer is advised to obtain verification from their Solicitor or Surveyor.