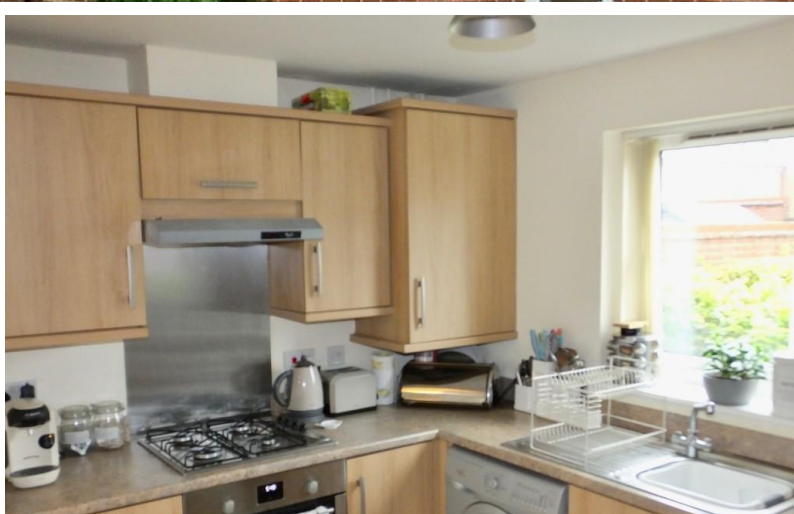


TO LET



Somers Way, Eastleigh

2 Bedrooms, 2 Bathroom, Flat

£1,250 pcm



Somers Way, Eastleigh

Flat,
2 bedroom, 2 bathroom

£1,250 pcm

Date available: 25th October 2025

Deposit: £1,442.30

Unfurnished

Council Tax band: B

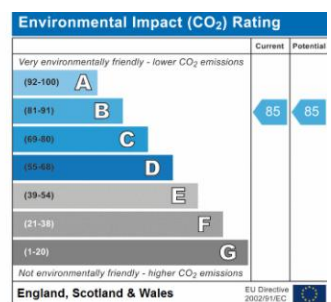
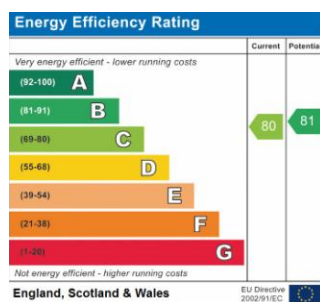
- Ground Floor with balcony
- Gas Central Heating
- Ensuite to Master
- Appliances included
- Deposit £1442.30
- Eastleigh C.Tax band B/EPC rate C
- Allocated Parking

DESCRIPTION Good size two bedroom luxury Ground floor apartment over looking Lakeside Park. Parking space allocated. Quiet area. Entrance hall with security entry phone. Double glazed and gas heating. Open plan large lounge/diner with balcony to far end, modern fitted kitchen with vinyl flooring and stainless steel cooker hood, gas hob and electric oven. w/d and f/f . White units and grey work tops. Kitchen approx (7.8 x 5.4) lounge/diner (17.1 x 11.2)

Two double bedrooms of larger than average size. En suite shower room to master bedroom, with white suite and vinyl flooring. Bed 1 (11.7 x 8.1) Bed 2 (14.9 x 8.0)

2nd Bathroom of good size with white suite and vinyl flooring.

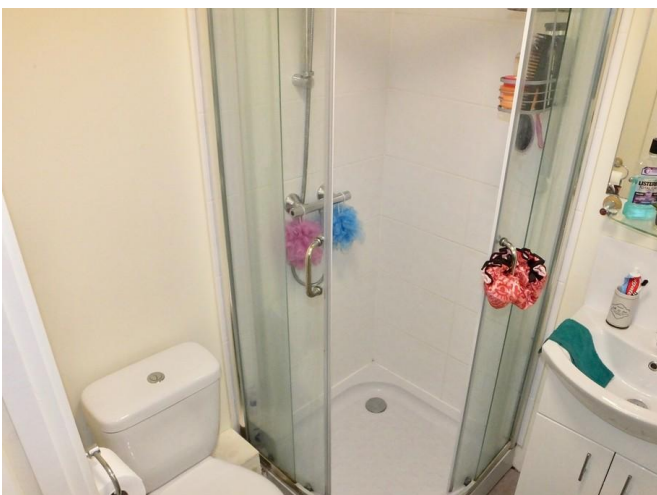
Neutral decor and carpets throughout.





Bin store and bike store.

On main Eastleigh Road go past the train station at Parkway and turn left at traffic lights, South Street, go to end of Road and turn right and then 1st left into Argosy Crescent, then take next right into Somers Way follow it round the large green area and Somers way apartments will be in front of you at far end overlooking Lakeside Park.



Martin & Co Chandler

46 London Road • • Southampton • SO15 2AH

T: 02380 390012 • E: chandlersford@martinco.com <http://www.martinco.com>

02380 390012



Accuracy: References to the Tenure of a Property are based on information supplied by the Seller. The Agent has not had sight of the title documents. A Buyer is advised to obtain verification from their Solicitor. Items shown in photographs including but not limited to carpets, fixtures and fittings are not included unless specifically mentioned within the sales particulars. They may however be available by separate negotiation. Buyers must check the availability of any property and make an appointment to view before embarking on any journey to see a property. No person in the employment of the agent has any authority to make any representation about the property, and accordingly any information given is entirely without responsibility on the part of the agents, sellers(s) or lessors(s). Any property particulars are not an offer or contract, nor for part of one. **Sonic / laser Tape:** Measurements taken using a sonic / laser tape measure may be subject to a small margin of error. **All Measurements:** All Measurements are Approximate. **Services Not tested:** The Agent has not tested any apparatus, equipment, fixtures and fittings or services and so cannot verify that they are in working order or fit for the purpose. A Buyer is advised to obtain verification from their Solicitor or Surveyor.