

TO LET



Maytree Road, Chandler's Ford

3 Bedrooms, 1 Bathroom, Semi-Detached House

£1,400 pcm



Maytree Road, Chandler's Ford

Semi-Detached House,
3 bedroom, 1 bathroom

£1,400 pcm

Date available: 17th August 2026

Deposit: £1,615.38

Unfurnished

Council Tax band:

- Available 17th August 2025
- Pets considered, No smokers
- Eastleigh Borough Council Band 'D'
- Energy Performance rate D
- Dining room
- Cloakroom
- Kitchen

Porch, Hallway, Sitting room, Dining room, Kitchen, 3 Bedrooms, Bathroom, Garage and Gardens.

ENTRANCE Double glazed front door to hallway.

HALLWAY, doors to all rooms, and stairs to first floor.

CLOAKROOM Low level WC and wash hand basin, extractor.

SITTING ROOM 10'11" x 13'10" feature gas fire place, large windows to front elevation.

KITCHEN 12'4" x 8'4" good range of wall and floor units, a one bowl stainless steel sink and drainer, a freestanding electric oven and electric hob, freestanding fridge/freezer, under counter washing machine, and under counter freezer, a window overlooking the rear garden and door leading to the

Energy Efficiency Rating

	Current	Potential
Very energy efficient - lower running costs		
(92+) A		
(81-91) B		88
(69-80) C		
(55-68) D	67	
(39-54) E		
(21-38) F		



rear garden.

BEDROOM 1 11'5" x 12'10" overlooking rear aspect, plenty of built in storage.

BEDROOM 2 10'2" x 9'5" overlooking front aspect, fitted wardrobe.

BEDROOM 3 12'5" x 7' overlooking front aspect.

BATHROOM 8'4"x 6'10" comprises a neutral suite with low level WC, wash hand basin, panel bath, and shower cubicle with shower, obscured window to the rear.

SEPARATE WC

OUTSIDE Front garden :- lawn with small shrubs and pathway leading to front door and also to the garage and the side of the property.

Rear garden:- approached via a side gate. Large garden mainly lawn with mature shrubs and trees with patio area decked area and garden shed.

GARAGE, up and over door. CAR PORT

OTHER INFORMATION.



TV points: Sitting room

Terrestrial TV aerial Yes Sky dish
Subject to connection

Smoke alarms Yes

Security Alarm No Broadband - subject to connection

* BRAND NEW GAS CENTRAL HEATING

* DOUBLE GLAZED

SCHOOLS

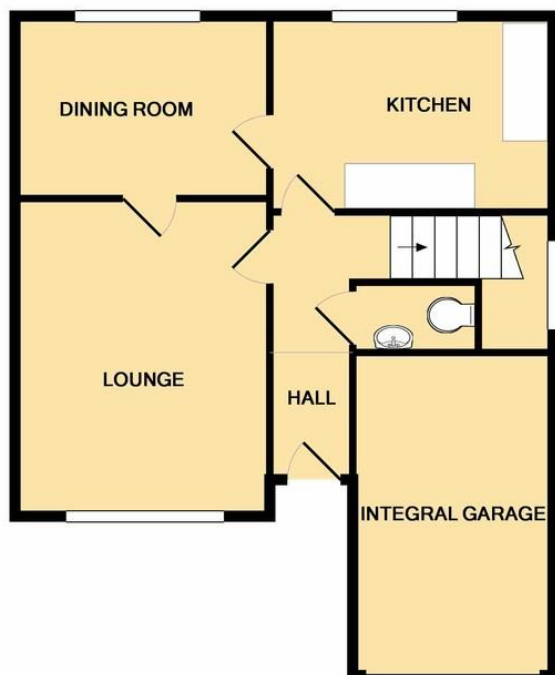
* Hiltingbury school

* Secondary School:- Thornden School

LOCAL AUTHORITY INFORMATION

EASTLEIGH BOROUGH COUNCIL BAND 'D'





GROUND FLOOR



1ST FLOOR

Whilst every attempt has been made to ensure the accuracy of the floor plan contained here, measurements of doors, windows, rooms and any other items are approximate and no responsibility is taken for any error, omission, or mis-statement. This plan is for illustrative purposes only and should be used as such by any prospective purchaser. The services, systems and appliances shown have not been tested and no guarantee as to their operability or efficiency can be given
Made with Metropix ©2017

Martin & Co Chandler

46 London Road • Southampton • SO15 2AH

T: 02380 390012 • E: chandlersford@martinco.com <http://www.martinco.com>

02380 390012



Accuracy: References to the Tenure of a Property are based on information supplied by the Seller. The Agent has not had sight of the title documents. A Buyer is advised to obtain verification from their Solicitor. Items shown in photographs including but not limited to carpets, fixtures and fittings are not included unless specifically mentioned within the sales particulars. They may however be available by separate negotiation. Buyers must check the availability of any property and make an appointment to view before embarking on any journey to see a property. No person in the employment of the agent has any authority to make any representation about the property, and accordingly any information given is entirely without responsibility on the part of the agents, sellers(s) or lessors(s). Any property particulars are not an offer or contract, nor for part of one. **Sonic / Laser Tape:** Measurements taken using a sonic / laser tape measure may be subject to a small margin of error. **All Measurements:** All Measurements are Approximate. **Services Not tested:** The Agent has not tested any apparatus, equipment, fixtures and fittings or services and so cannot verify that they are in working order or fit for the purpose. A Buyer is advised to obtain verification from their Solicitor or Surveyor.