

TO LET



Hiltingbury Road, Chandler's Ford

2 Bedrooms, 1 Bathroom, First Floor Flat

£1,200 pcm


MARTIN&CO



Hiltingbury Road, Chandler's Ford

2 Bedrooms, 1 Bathroom

£1,200 pcm

Date available: 12th August 2024

Deposit: £1,384.61

Unfurnished

Council Tax band: A

- Available 12th August 2024
- Not suitable for smokers or pets
- Eastleigh Borough Council Band 'B'
- Recently decorated
- Spacious Rooms, built in storage
- Communal Garden
- Two spacious double bedrooms

A spacious two bedroom first floor apartment, situated in the popular location of Hiltingbury boasting two double bedrooms, a garage, Thornden School Catchment area. This is a short term let only.

COMMUNAL ENTRANCE HALL Communal entrance with security entry system. Stairs to all floors. Door to:

ENTRANCE HALL Window to side aspect, built in storage cupboard, door to:

LIVING ROOM

18' 5" x 12' 2" max (5.61m x 3.71m) 18' 5" x 12' 2" (5.61m) Windows to front aspect, open arch to Kitchen/Breakfast room, door to inner lobby, telephone point and T.V. point.

KITCHEN/BREAKFAST ROOM

(3.81m x 3.15m) 12' 6" x 10' 4" Windows to rear aspect, range of matching eye level and base fitted units under, roll edge work surfaces, inset sink with mixer taps and drainer, fitted oven with electric hob and cooker hood





above, white goods included.

LOBBY Airing cupboard housing hot water cylinder, doors to all rooms.

BEDROOM ONE 13' 10" x 9' 4" to front of wardrobes (4.22m x 2.84m)

Windows to side aspect, fitted wardrobes with hanging and shelf space and mirrored sliding doors.

BEDROOM TWO

(4.22m x 3.15m) 13' 10" x 10' 4" Windows to side aspect, range of built-in wardrobe cupboards with bedside drawers and overhead cupboards.

BATHROOM Three piece suite comprising of low level W.C., pedestal wash hand basin, panelled enclosed bath with mixer tap and shower attachment, fully tiled, obscure window to rear aspect.

GARAGE IN BLOCK

With up-and-over door.

OUTSIDE COMMUNAL GARDENS Well maintained communal gardens lined with mature trees and shrubs, communal parking, garage.

LOCAL AUTHORITY INFORMATION

Eastleigh Borough Council

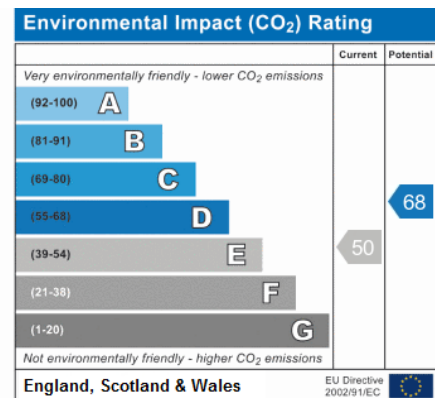
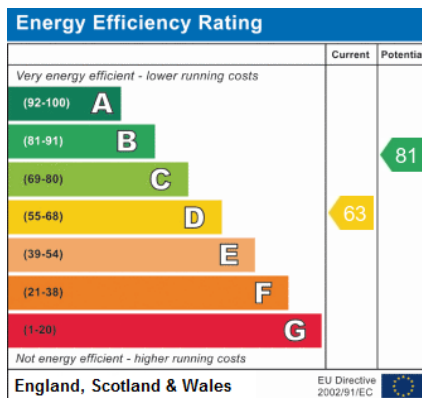
Tax Band 'B'

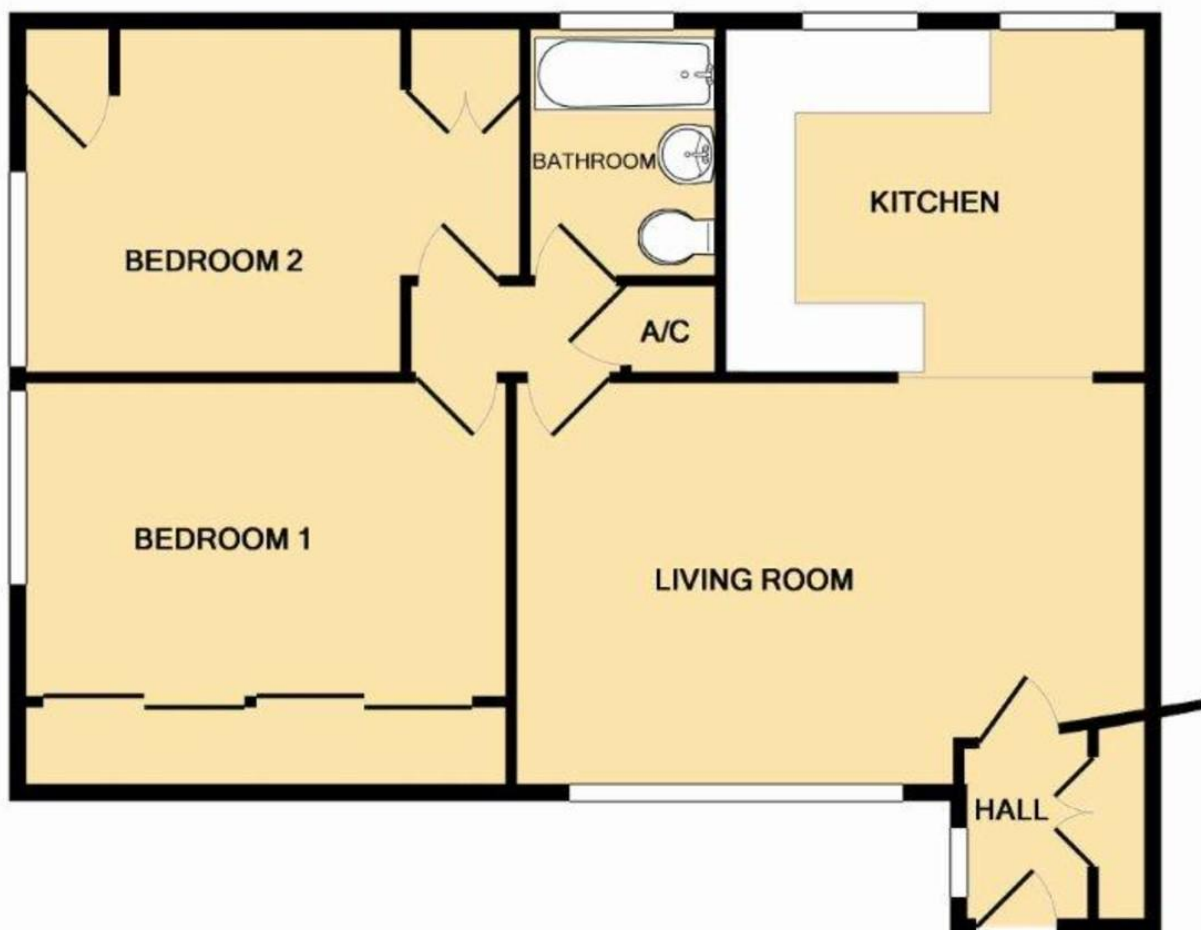
LOCAL SCHOOLS INFORMATION

Infant/Junior: Hiltingbury School

Secondary: The Thornden School







TOTAL APPROX. FLOOR AREA 736 SQ.FT. (68.3 SQ.M.)

Whilst every attempt has been made to ensure the accuracy of the floor plan contained here, measurements of doors, windows, rooms and any other items are approximate and no responsibility is taken for any error, omission, or mis-statement. This plan is for illustrative purposes only and should be used as such by any prospective purchaser. The services, systems and appliances shown have not been tested and no guarantee as to their operability or efficiency can be given

Made with Metropix ©2012

Martin & Co Chandler

46 London Road • Southampton • SO15 2AH

T: 02380 390012 • E: chandlerford@martinco.com <http://www.martinco.com>

02380 390012



Accuracy: References to the Tenure of a Property are based on information supplied by the Seller. The Agent has not had sight of the title documents. A Buyer is advised to obtain verification from their Solicitor. Items shown in photographs including but not limited to carpets, fixtures and fittings are not included unless specifically mentioned within the sales particulars. They may however be available by separate negotiation. Buyers must check the availability of any property and make an appointment to view before embarking on any journey to see a property. No person in the employment of the agent has any authority to make any representation about the property, and accordingly any information given is entirely without responsibility on the part of the agents, sellers(s) or lessors(s). Any property particulars are not an offer or contract, nor for part of one. **Sonic / laser Tape:** Measurements taken using a sonic / laser tape measure may be subject to a small margin of error. **All Measurements:** All Measurements are Approximate. **Services Not tested:** The Agent has not tested any apparatus, equipment, fixtures and fittings or services and so cannot verify that they are in working order or fit for the purpose. A Buyer is advised to obtain verification from their Solicitor or Surveyor.