

**TO LET**



## **Hursley Court, Hiltingbury, Chandler's Ford**

**2 Bedrooms, 1 Bathroom, Apartment**

**£1,250 pcm**



## Hursley Court, Hiltingbury, Chandler's Ford

Apartment,  
2 bedroom, 1 bathroom

£1,250 pcm

Date available: Available Now

Deposit: £1,442.30

Unfurnished

Council Tax band: B

- Available 2nd December 2024
- No pets or smokers
- Eastleigh Borough Council Band 'B'
- Sitting room
- Kitchen/Breakfast room
- Bathroom
- Two Bedrooms

A beautifully presented 2 Bedroom top floor apartment with Garage in a block. Hiltingbury & Thornden Schools' Catchment.

Hallway, Sitting room, Kitchen/breakfast room, 2 Bedrooms, Bathroom, Garage in a block.

\*NO SMOKERS \* NO PETS.\*

COMMUNAL ENTRANCE Secure door entrance, stairs leading to the top floor.

ENTRANCE HALLWAY, laminate flooring, storage cupboard suitable for coats and shoes.

SITTING ROOM 18'6" x 12'3" overlooking front aspect.

KITCHEN/BREAKFAST ROOM 10'4" x 12'5" good range of wall and floor units, a one and a half bowl sink

### Energy Efficiency Rating

	Current	Potential
Very energy efficient - lower running costs		
(92+) <b>A</b>		
(81-91) <b>B</b>		
(69-80) <b>C</b>		
(55-68) <b>D</b>	64	72
(39-54) <b>E</b>		
(21-38) <b>F</b>		



and drainer, a slot in electric oven and hob, dishwasher and freestanding fridge/freezer, washing machine, a window overlooking the rear.

HALLWAY airing cupboard with wooden slatted shelves.

BEDROOM 1 13'10" x 11'10"

BEDROOM 2 13'10" x 11'10" Fitted triple wardrobe.

BATHROOM comprises a white suite with low level WC, wash hand basin, panel bath with mixer tap and shower attachment, Electric shower over bath, obscured window to the rear.

OUTSIDE

GARAGE, up and over door.

OTHER INFORMATION.

Telephone points:- Sitting room

TV points: Sitting room

Terrestrial TV aerial Yes

Smoke alarms Yes

Security Alarm No

Broadband - subject to connection

\* ELECTRIC STORAGE HEATERS

\* DOUBLE GLAZED

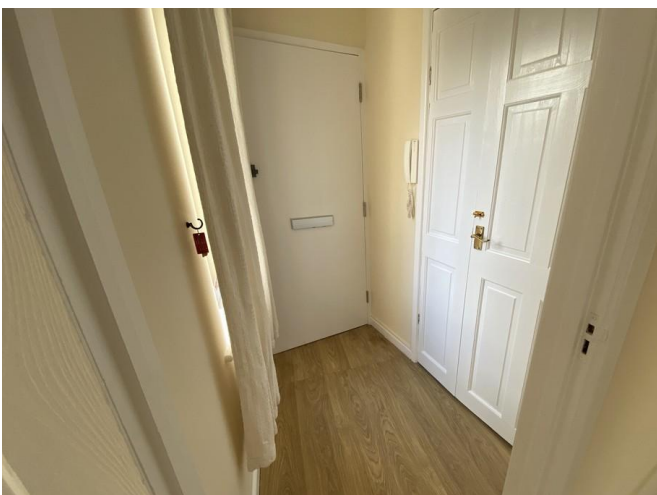
SCHOOLS

\* Hiltingbury school

\* Secondary School:- Thornden School

LOCAL AUTHORITY INFORMATION

EASTLEIGH BOROUGH COUNCIL BAND 'B'



---

**Martin & Co Southampton City** **02380 988881**  
46 London Road • • Southampton • SO15 2AH  
T: 02380 988881 • E: southamptoncity@martinco.com <http://www.martinco.com>



**Accuracy:** References to the Tenure of a Property are based on information supplied by the Seller. The Agent has not had sight of the title documents. A Buyer is advised to obtain verification from their Solicitor. Items shown in photographs including but not limited to carpets, fixtures and fittings are not included unless specifically mentioned within the sales particulars. They may however be available by separate negotiation. Buyers must check the availability of any property and make an appointment to view before embarking on any journey to see a property. No person in the employment of the agent has any authority to make any representation about the property, and accordingly any information given is entirely without responsibility on the part of the agents, sellers(s) or lessors(s). Any property particulars are not an offer or contract, nor for m part of one. **Sonic / laser Tape:** Measurements taken using a sonic / laser tape measure may be subject to a small margin of error. **All Measurements:** All Measurements are Approximate. **Services Not tested:** The Agent has not tested any apparatus, equipment, fixtures and fittings or services and so cannot verify that they are in working order or fit for the purpose. A Buyer is advised to obtain verification from their Solicitor or Surveyor.