

TO LET



Tristram Close, Knightwood Park

2 Bedrooms, 1 Bathroom, flat

£1,250 pcm


MARTIN&CO



Tristram Close, Knightwood Park

flat,
2 bedroom, 1 bathroom

£1,250 pcm

Date available: 10th June 2026

Deposit: £1,442.30

Unfurnished

Council Tax band: B

- Available 10th June 2026
- Not suitable for Pets
- Test Valley Borough Council Tax Band B
- Hall
- Sitting room
- Kitchen
- 2 Bedrooms

HALLWAY Store cupboard. Under stairs cupboard. Telephone point.

SITTING ROOM 11'3" x 10'1" TV aerial point. settee
KITCHEN 9'5" x 6'10" Good range of wall and floor units. Wall hung gas boiler. Single drainer sink with mixer tap. Gas hob and electric oven. Filter and light over. Washer/dryer. Fridge/freezer. Kitchen utensils

BEDROOM1 1 0'1" x 8'9" min 2 double wardrobes. TV aerial. Telephone point. Double bed

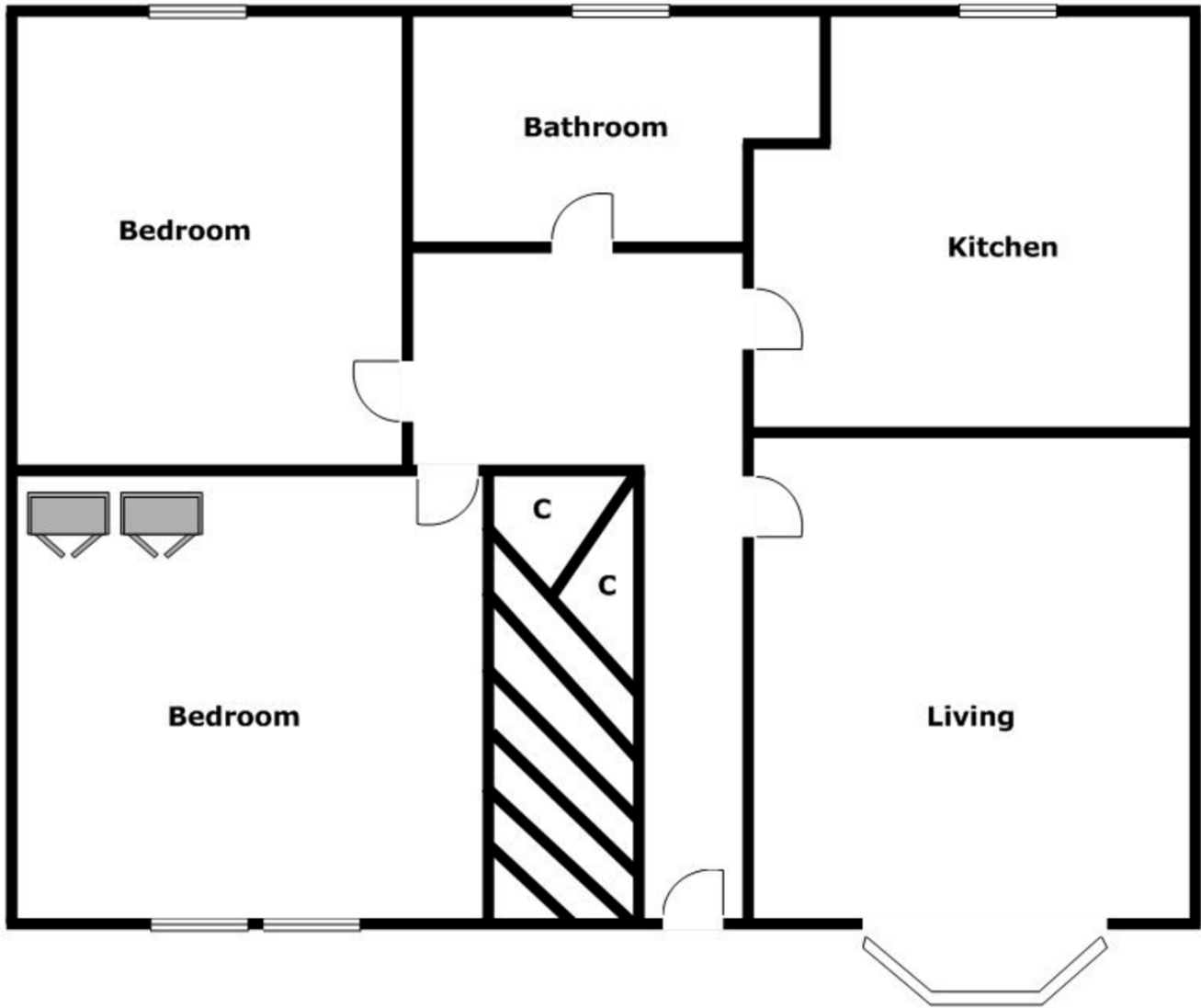
BEDROOM 2 10'1" x 7'11"

BATHROOM Bath with shower attachment. WC, basin.

OUTSIDE - 2 Parking spaces to the front of the garage (garage not included). Shared rear garden area with paved area and drying lines.

Score	Energy rating	Current	Potential
92+	A		
81-91	B		
69-80	C	77 C	79 C
55-68	D		
39-54	E		
21-38	F		
1-20	G		





Martin & Co Chandler

46 London Road • Southampton • SO15 2AH

T: 02380 390012 • E: chandlersford@martinco.com <http://www.martinco.com>

02380 390012



Accuracy: References to the Tenure of a Property are based on information supplied by the Seller. The Agent has not had sight of the title documents. A Buyer is advised to obtain verification from their Solicitor. Items shown in photographs including but not limited to carpets, fixtures and fittings are not included unless specifically mentioned within the sales particulars. They may however be available by separate negotiation. Buyers must check the availability of any property and make an appointment to view before embarking on any journey to see a property. No person in the employment of the agent has any authority to make any representation about the property, and accordingly any information given is entirely without responsibility on the part of the agents, sellers(s) or lessors(s). Any property particulars are not an offer or contract, nor for part of one. **Sonic / laser Tape:** Measurements taken using a sonic / laser tape measure may be subject to a small margin of error. **All Measurements:** All Measurements are Approximate. **Services Not tested:** The Agent has not tested any apparatus, equipment, fixtures and fittings or services and so cannot verify that they are in working order or fit for the purpose. A Buyer is advised to obtain verification from their Solicitor or Surveyor.