

TO LET



Cumberland Ave Chandler's Ford

3 Bedrooms, 1 Bathroom, house

£1,700 pcm



Cumberland Ave Chandler's Ford

house,
3 bedroom, 1 bathroom

£1,700 pcm

Date available: 30th September 2025

Deposit: £1,961.53

Unfurnished

Council Tax band: C

- Available End of September 2025
- Gardens
- Eastleigh Borough Council Tax Band C
- Porch - Hallway - Sitting room
- Dining room
- Utility/Cloaks
- 3 Bedrooms

ENTRANCE HALL 10' 7" x 6' 5" (3.25m x 1.98m) With under stairs cupboard and stairs to first floor

LOUNGE 11' 3" x 14' 10" (3.45m x 4.54m) Feature fireplace and window to front aspect

KITCHEN 8' 6" x 14' 9" (2.6m x 4.5m) Gas hob and window to side aspect

DINING ROOM 10' 11" x 11' 6" (3.34m x 3.51m) French doors leading to rear garden

UTILITY ROOM 5' 6" x 5' 3" (1.68m x 1.61m) Washing machine included

CLOAKROOM 9' 8" x 3' 5" (2.95m x 1.06m) Downstairs cloakroom with low level WC, basin and window to side aspect

Energy Efficiency Rating		
	Current	Potential
Very energy efficient - lower running costs		
(92+) A		
(81-91) B		87
(69-80) C	69	
(55-68) D		
(39-54) E		
(21-38) F		



LANDING Stairs and landing with overhead storage cupboards



SHOWER ROOM 4' 7" x 5' 2" (1.4m x 1.6m) Shower unit, sink, towel radiator and window to side aspect

TOILET 2' 3" x 5' 2" (0.7m x 1.6m) Toilet is separate to bathroom with sink, towel radiator and window to side aspect

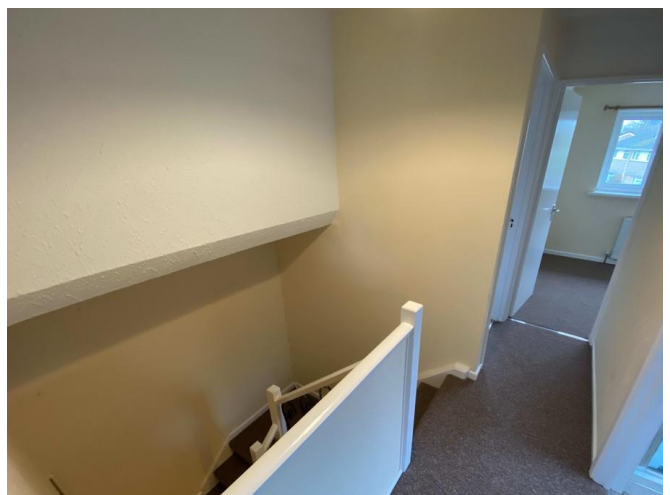
BEDROOM 1 14' 10" x 8' 9" (4.54m x 2.67m) Carpets and windows to rear aspect

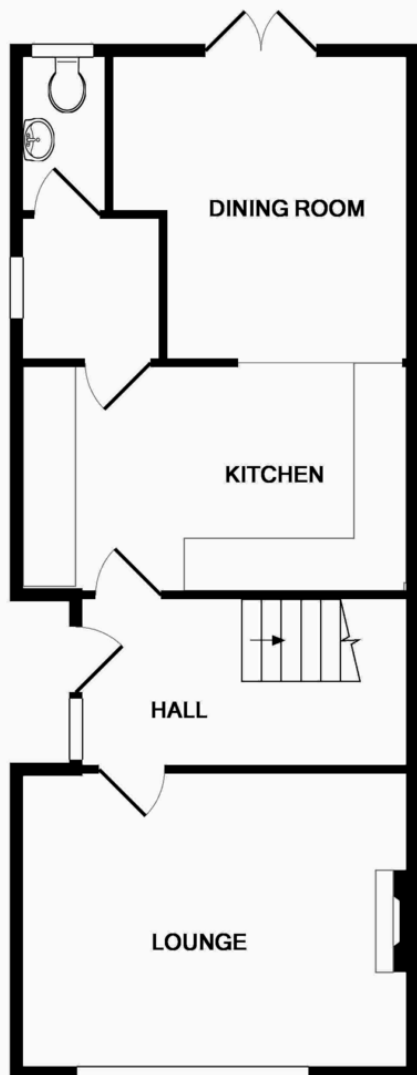
BEDROOM 2 10' 0" x 8' 2" (3.05m x 2.5m) Carpets and window to front aspect

BEDROOM 3 11' 3" x 6' 2" (3.45m x 1.9m) Carpets and window to front aspect

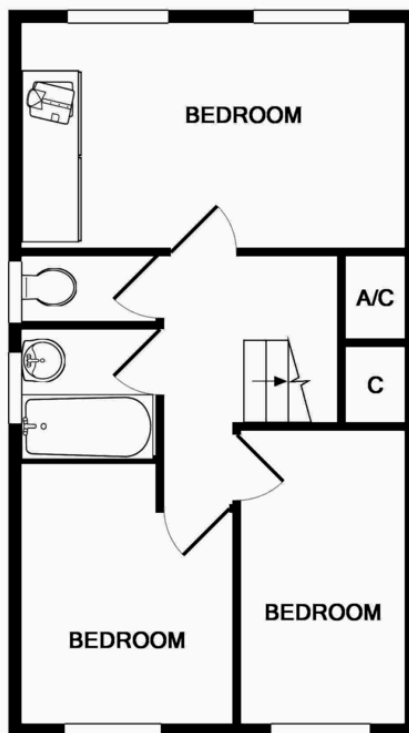
GARAGE There is a long drive way with parking for up to 4 cars, leading to a good sized single garage with electric sockets and lighting

GARDEN Enclosed garden with lawn and patio





GROUND FLOOR



1ST FLOOR

Whilst every attempt has been made to ensure the accuracy of the floor plan contained here, measurements of doors, windows, rooms and any other items are approximate and no responsibility is taken for any error, omission, or mis-statement. This plan is for illustrative purposes only and should be used as such by any prospective purchaser. The services, systems and appliances shown have not been tested and no guarantee as to their operability or efficiency can be given
Made with Metropix ©2011

Martin & Co Chandler

46 London Road • Southampton • SO15 2AH

T: 02380 390012 • E: chandlersford@martinco.com <http://www.martinco.com>

02380 390012



Accuracy: References to the Tenure of a Property are based on information supplied by the Seller. The Agent has not had sight of the title documents. A Buyer is advised to obtain verification from their Solicitor. Items shown in photographs including but not limited to carpets, fixtures and fittings are not included unless specifically mentioned within the sales particulars. They may however be available by separate negotiation. Buyers must check the availability of any property and make an appointment to view before embarking on any journey to see a property. No person in the employment of the agent has any authority to make any representation about the property, and accordingly any information given is entirely without responsibility on the part of the agents, sellers(s) or lessors(s). Any property particulars are not an offer or contract, nor for m part of one. **Sonic / laser Tape:** Measurements taken using a sonic / laser tape measure may be subject to a small margin of error. **All Measurements:** All Measurements are Approximate. **Services Not tested:** The Agent has not tested any apparatus, equipment, fixtures and fittings or services and so cannot verify that they are in working order or fit for the purpose. A Buyer is advised to obtain verification from their Solicitor or Surveyor.