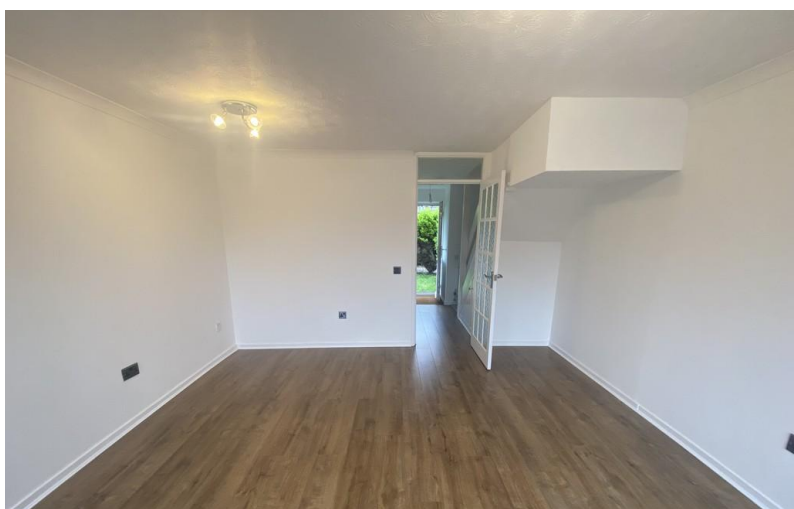
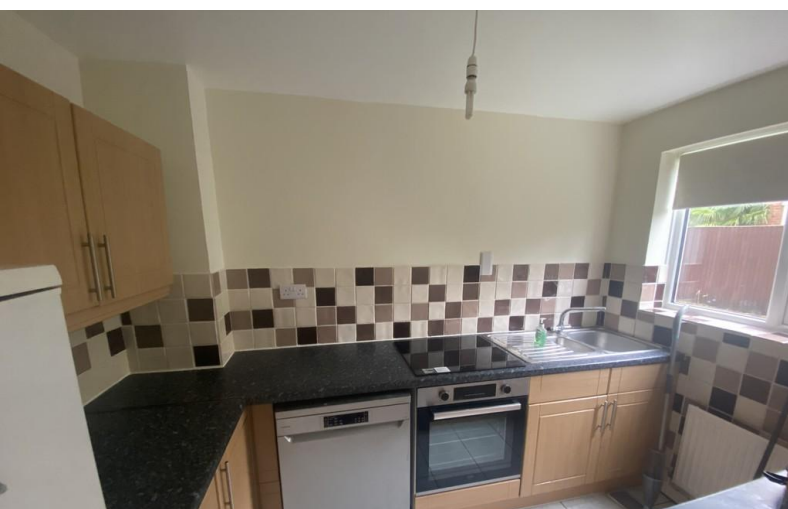


**TO LET**



**Havendale, Hedge End**

**2 Bedrooms, 1 Bathroom, End of Terrace House**

**£1,200 pcm**



## Havendale, Hedge End

End of Terrace House,  
2 bedroom, 1 bathroom

£1,200 pcm

Date available: Available Now

Deposit: £1,384.61

Unfurnished

Council Tax band: B

- Refurbished Two bedroom end of terrace
- 7th November 2024
- Fitted Kitchen with White Goods
- Rear Garden with shed
- Newly painted, new flooring
- Rent £1200 Deposit 1,384.61
- Allocated Parking

Martin and Co are delighted to present this well presented two bedroom end of terrace property, close to local amenities as well as transportation links.

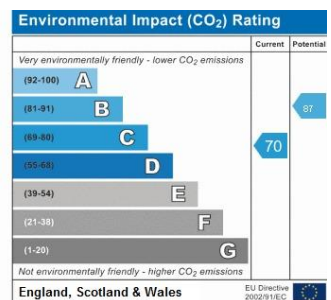
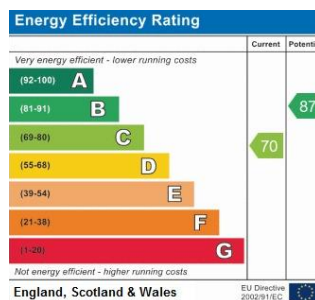
The accommodation briefly comprises: Entrance hall, kitchen, lounge/diner, two bedrooms and bathroom and the benefits include double glazing, gas central heating, off road parking and front and rear gardens.

KITCHEN 9' 8" x 6' 5" (2.95m x 1.98m)

LOUNGE/DINER 15' 3" x 13' 1" (4.67m x 3.99m)

BEDROOM ONE 13' 1" x 9' 6" (3.99m x 2.92m)

BEDROOM TWO 11' 1" x 8' 3" (3.4m x 2.54m)





---

## Martin & Co Chandler

46 London Road • Southampton • SO15 2AH

T: 02380 390012 • E: [chandlersford@martinco.com](mailto:chandlersford@martinco.com) <http://www.martinco.com>

# 02380 390012



**Accuracy:** References to the Tenure of a Property are based on information supplied by the Seller. The Agent has not had sight of the title documents. A Buyer is advised to obtain verification from their Solicitor. Items shown in photographs including but not limited to carpets, fixtures and fittings are not included unless specifically mentioned within the sales particulars. They may however be available by separate negotiation. Buyers must check the availability of any property and make an appointment to view before embarking on any journey to see a property. No person in the employment of the agent has any authority to make any representation about the property, and accordingly any information given is entirely without responsibility on the part of the agents, sellers(s) or lessors(s). Any property particulars are not an offer or contract, nor for part of one. **Sonic / laser Tape:** Measurements taken using a sonic / laser tape measure may be subject to a small margin of error. **All Measurements:** All Measurements are Approximate. **Services Not tested:** The Agent has not tested any apparatus, equipment, fixtures and fittings or services and so cannot verify that they are in working order or fit for the purpose. A Buyer is advised to obtain verification from their Solicitor or Surveyor.