

FOR SALE



21 Blackwood Road, Bromsgrove, B60 1AN

2 Bedrooms, 1 Bathroom, House

£249,950


MARTIN&CO



- Freehold semi-detached house
- Approx 595sqft
- 2 bedrooms & Bathroom
- Lounge & Fitted kitchen diner
- Gas-fired central heating
- PVC double glazing
- 3 car driveway
- Private rear garden
- Council Tax band C
- EPC Rating band C

**** VACANT & NO UPWARD CHAIN ****

This freehold semi-detached house occupies a good sized plot in a sought after residential area, within walking distance of the facilities of the town centre and is convenient for commuting to Birmingham and the motorway network.

The accommodation amounts to approximately 595sqft, comprising: a hall; living room; fitted kitchen diner; landing; two bedrooms; and a bathroom.

In addition, the property benefits from PVC double glazing, gas-fired central heating with an 'Ideal' combination boiler, driveway for up to three cars and a private rear garden.

Score	Energy rating	Current	Potential
92+	A		
81-91	B		88 B
69-80	C	72 C	
55-68	D		
39-54	E		
21-38	F		
1-20	G		



GROUND FLOOR

HALL 1.20m x 1.05m (3'11" x 3'5")

LOUNGE 4.23m x 3.85m (13'11" x 12'7")

FITTED KITCHEN DINER 3.82m x 2.73m (12'6" x 8'11")

FIRST FLOOR

LANDING 1.88m x 1.73m (6'2" x 5'8")

BEDROOM ONE 2.99m x 2.83m < 3.85m (9'9" x 9'3" < 12'2")

BEDROOM TWO 3.85m x 1.93m (12'7" x 6'4")

BATHROOM 1.87m x 1.81m (6'1" x 5'11")

OUTSIDE

PARKING

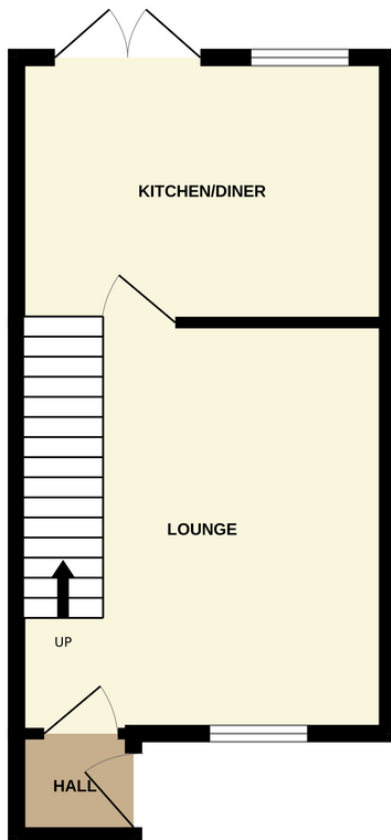
The tarmac drive along the side of the house provides off-road parking for up to three cars.

GARDENS

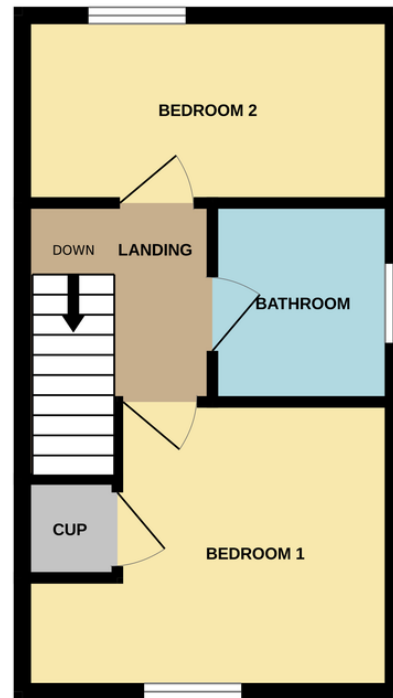
The house stands behind a lawned front garden and benefits from a private garden to the rear.



GROUND FLOOR



1ST FLOOR



Whilst every attempt has been made to ensure the accuracy of the floorplan contained here, measurements of doors, windows, rooms and any other items are approximate and no responsibility is taken for any error, omission or mis-statement. This plan is for illustrative purposes only and should be used as such by any prospective purchaser. The services, systems and appliances shown have not been tested and no guarantee as to their operability or efficiency can be given.
Made with Metropix ©2026

Martin & Co Worcester

45 Foregate Street • Worcester • WR1 1EE
T: 01905 619890 • E: worcester@martinco.com

01905 619890

<http://www.martinco.com>



Accuracy: References to the Tenure of a Property are based on information supplied by the Seller. The Agent has not had sight of the title documents. A Buyer is advised to obtain verification from their Solicitor. Items shown in photographs including but not limited to carpets, fixtures and fittings are not included unless specifically mentioned within the sales particulars. They may however be available by separate negotiation. Buyers must check the availability of any property and make an appointment to view before embarking on any journey to see a property. No person in the employment of the agent has any authority to make any representation about the property, and accordingly any information given is entirely without responsibility on the part of the agents, sellers(s) or lessors(s). Any property particulars are not an offer or contract, nor for part of one. **Sonic / laser Tape:** Measurements taken using a sonic / laser tape measure may be subject to a small margin of error. **All Measurements:** All Measurements are Approximate. **Services Not tested:** The Agent has not tested any apparatus, equipment, fixtures and fittings or services and so cannot verify that they are in working order or fit for the purpose. A Buyer is advised to obtain verification from their Solicitor or Surveyor.