

TO LET



Tarpan Walk, Westbury

2 Bedrooms, 1 Bathroom, Second Floor Apartment

£950 pcm


MARTIN&CO



Tarpan Walk, Westbury

Second Floor Apartment,
2 bedroom, 1 bathroom

£950 pcm

Date available: 1st May 2026

Deposit: £1,095

Holding deposit: £215

Unfurnished

Council Tax band: B

- Two bedroom, second floor purpose built apartment
- Open plan fitted kitchen, dining area and living room
- Two good size bedrooms
- Family bathroom with shower over bath
- Allocated parking for one vehicle
- Popular residential location in Leigh Park
- Professionally managed by Martin & Co.

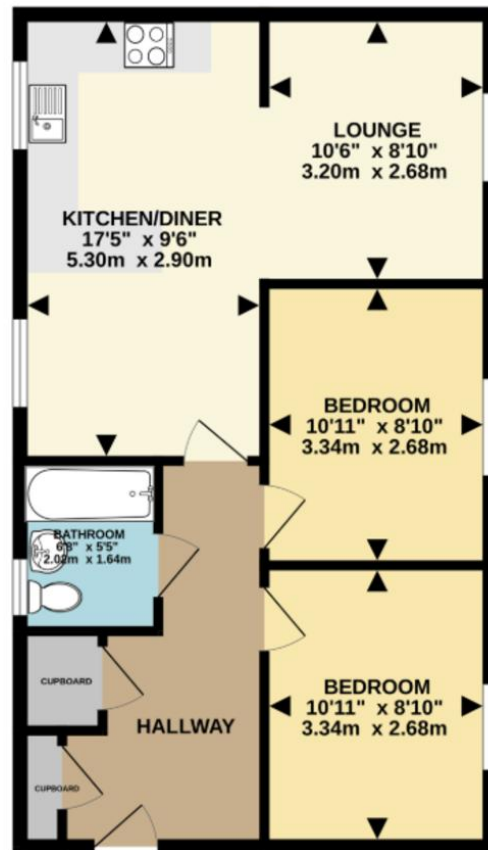
A two bedroom, second floor purpose built apartment. Benefitting from a light and spacious open plan kitchen, dining and living room, as well as allocated parking.

Energy rating and score

This property's energy rating is C. It has the potential to be C.

[See how to improve this property's energy efficiency.](#)

Score	Energy rating	Current	Potential
92+	A		
81-91	B		
69-80	C	73 C	76 C
55-68	D		
39-54	E		
21-38	F		
1-20	G		



Martin & Co Westbury

7 Palomino Place • Westbury • Wiltshire • BA13 3SD
T: 01373 866686 • E: westbury@martinco.com

01373 866686

<http://www.martinco.com>



Accuracy: References to the Tenure of a Property are based on information supplied by the Seller. The Agent has not had sight of the title documents. A Buyer is advised to obtain verification from their Solicitor. Items shown in photographs including but not limited to carpets, fixtures and fittings are not included unless specifically mentioned within the sales particulars. They may however be available by separate negotiation. Buyers must check the availability of any property and make an appointment to view before embarking on any journey to see a property. No person in the employment of the agent has any authority to make any representation about the property, and accordingly any information given is entirely without responsibility on the part of the agents, sellers(s) or lessors(s). Any property particulars are not an offer or contract, nor form part of one. **Sonic / Laser Tape:** Measurements taken using a sonic / laser tape measure may be subject to a small margin of error. **All Measurements:** All Measurements are Approximate. **Services Not tested:** The Agent has not tested any apparatus, equipment, fixtures and fittings or services and so cannot verify that they are in working order or fit for the purpose. A Buyer is advised to obtain verification from their Solicitor or Surveyor.