

**TO LET**



**Bishopstrow, Warminster**

**2 Bedrooms, 1 Bathroom, Cottage**

**£1,000 pcm**

  
**MARTIN&CO**



**Bishopstrow,  
Warminster**  
Cottage,  
2 bedroom, 1 bathroom

£1,000 pcm

Date available: 1st October  
2024

Deposit: £1,150

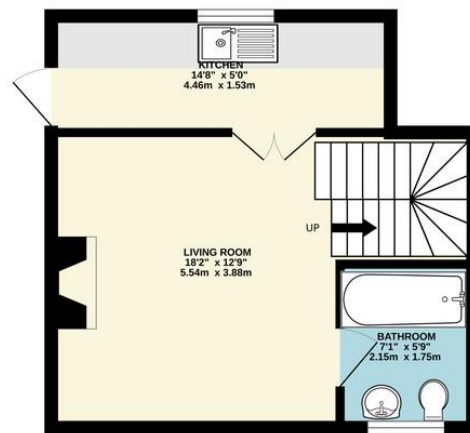
Holding deposit: £230

Furnished

Council Tax band: B

- Furnished two bedroom period village cottage
- Living room with character features
- Modern fitted kitchen
- Downstairs bathroom
- Beautiful rear garden with views
- On-street parking
- Available 1st October 2024

GROUND FLOOR  
298 sq.ft. (27.7 sq.m.) approx.



1ST FLOOR  
231 sq.ft. (21.5 sq.m.) approx.



\*Watch the video tour\* Discover the charm of this enchanting two-bedroom period cottage nestled in the beautiful village of Bishopstrow. The property will be fully furnished.

**Martin & Co Westbury**

7 Palomino Place • Westbury • Wiltshire • BA13 3SD  
T: 01373 866686 • E: westbury@martinco.com

01373 866686  
<http://www.martinco.com>

TOTAL FLOOR AREA: 529 sq.ft. (49.2 sq.m.) approx.

The Agent has not had sight of the title documents. A Buyer is advised to obtain verification from their Solicitor. Items shown in photographs including but not limited to carpets, fixtures and fittings are not included unless specifically mentioned within the sales particulars. They may however be available by separate negotiation. Buyers must check the availability of any property and make an appointment to view before embarking on any journey to see a property. No person in the employment of the agent has any authority to make any representation about the property, and accordingly any information given is entirely without responsibility on the part of the agents, sellers(s) or lessors(s). Any property particulars are not an offer or contract, nor form part of one. **Sonic / Laser Tape:** Measurements taken using a sonic / laser tape measure may be subject to a small margin of error. **All Measurements:** All Measurements are Approximate. **Services Not tested:** The Agent has not tested any apparatus, equipment, fixtures and fittings or services and so cannot verify that they are in working order or fit for the purpose. A Buyer is advised to obtain verification from their Solicitor or Surveyor.



**Accuracy:** References to the Tenure of a Property are based on information supplied by the Seller. The Agent has not had sight of the title documents. A Buyer is advised to obtain verification from their Solicitor. Items shown in photographs including but not limited to carpets, fixtures and fittings are not included unless specifically mentioned within the sales particulars. They may however be available by separate negotiation. Buyers must check the availability of any property and make an appointment to view before embarking on any journey to see a property. No person in the employment of the agent has any authority to make any representation about the property, and accordingly any information given is entirely without responsibility on the part of the agents, sellers(s) or lessors(s). Any property particulars are not an offer or contract, nor form part of one. **Sonic / Laser Tape:** Measurements taken using a sonic / laser tape measure may be subject to a small margin of error. **All Measurements:** All Measurements are Approximate. **Services Not tested:** The Agent has not tested any apparatus, equipment, fixtures and fittings or services and so cannot verify that they are in working order or fit for the purpose. A Buyer is advised to obtain verification from their Solicitor or Surveyor.