

FOR SALE

DOMINIC' THIRD FLOOR

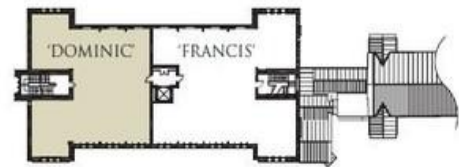


APARTMENT 9

Overall floor space

227 sq m	2451 sq ft
Kitchen / Breakfast Room	7202 x 4940
Living	7252 x 6401
Dining Hall	6763 x 3377
Master Bedroom	7074 (max) x 4935 (max)
Second Bedroom	4906 x 3959
	23'7" x 16'2"
	23'9" x 21'0"
	22'2" x 11'0"
	23'2" x 16'2"
	16'1" x 12'11"

Plans and dimensions may be subject to revision during construction - please refer to current drawings at the sales office



Offers In Region Of **£670,000** Leasehold

Mayfield Grange, Little
Trodgers Lane

2 Bedroom Luxury Apartment

- KEYED PRIVATE LIFT ACCESS
- PARKING
- USE OF ON SITE GYM
- SUPERB VIEWS
- 2 DOUBLE BEDROOMS WITH FULL ENSUITES
- EPC Rating: EER 72

01892 543856

tunbridgewells@martinco.com