



9 Hassocks Close, Nottingham, NG9 2GH
£179,000 Leasehold



Hassocks Close, Beeston, Nottingham

2 Bedrooms, 2 Bathroom

£179,000

- Two Bedroom Ground Floor Apartment
- Open Plan Living
- Master Bedroom With Fitted Wardrobes & En-Suite
- French Doors to Patio Area
- Allocated Parking
- No Onward Chain

Suiting a wide range of buyers this two bedroom ground floor apartment stands in this excellent location close to Beeston Town Centre, NET Tram Network and the University of Nottingham. The accommodation comprises of an entrance hallway leading to a generously sized, open plan living/dining/kitchen, master bedroom with French Doors, fitted wardrobes and en-suite shower room, second double bedroom and a fitted bathroom. The property



Score	Energy rating	Current	Potential
92+	A		
81-91	B		
69-80	C	75 C	77 C
55-68	D		
39-54	E		
21-38	F		
1-20	G		

benefits from an allocated parking space and is being offered to the market with no onward chain.

HALLWAY 8' 11" x 3' 4" (2.72m x 1.02m) With fitted carpet, wall mounted radiator and ceiling light.

OPEN PLAN LIVING/DINING/KITCHEN 18' 5" x 18' 1" (5.61m x 5.51m) The living area has a fitted carpet, uPVC double glazed window to the front elevation, wall mounted radiator and ceiling light. The fitted kitchen has a range of fitted high and low level units with a squared edge worktop over incorporating a one and quarter bowl stainless steel sink and drainer and breakfast bar, integrated electric oven, inset gas hob with stainless steel splash back and extractor hood over, washing machine plumbing, vinyl floor covering, uPVC double glazed window to the side elevation and ceiling light. The dining area has fitted carpet, wall mounted radiator and ceiling light.

MASTER BEDROOM 10' 11" x 9' 1" (3.33m x 2.77m) With fitted carpet, uPVC double glazed French doors

to the front elevation, wall mounted radiator, fitted wardrobe and dressing table and ceiling light.

EN-SUITE Comprising of a shower enclosure with a mains fed mixer bar shower, low flush w.c., pedestal wash hand basin, vinyl floor covering, part wall tiling, chrome heated towel rail and ceiling light.

BEDROOM TWO 10' 5" x 8' 2" (3.18m x 2.49m) With fitted carpet, uPVC double glazed window to the front elevation, wall mounted radiator and ceiling light.

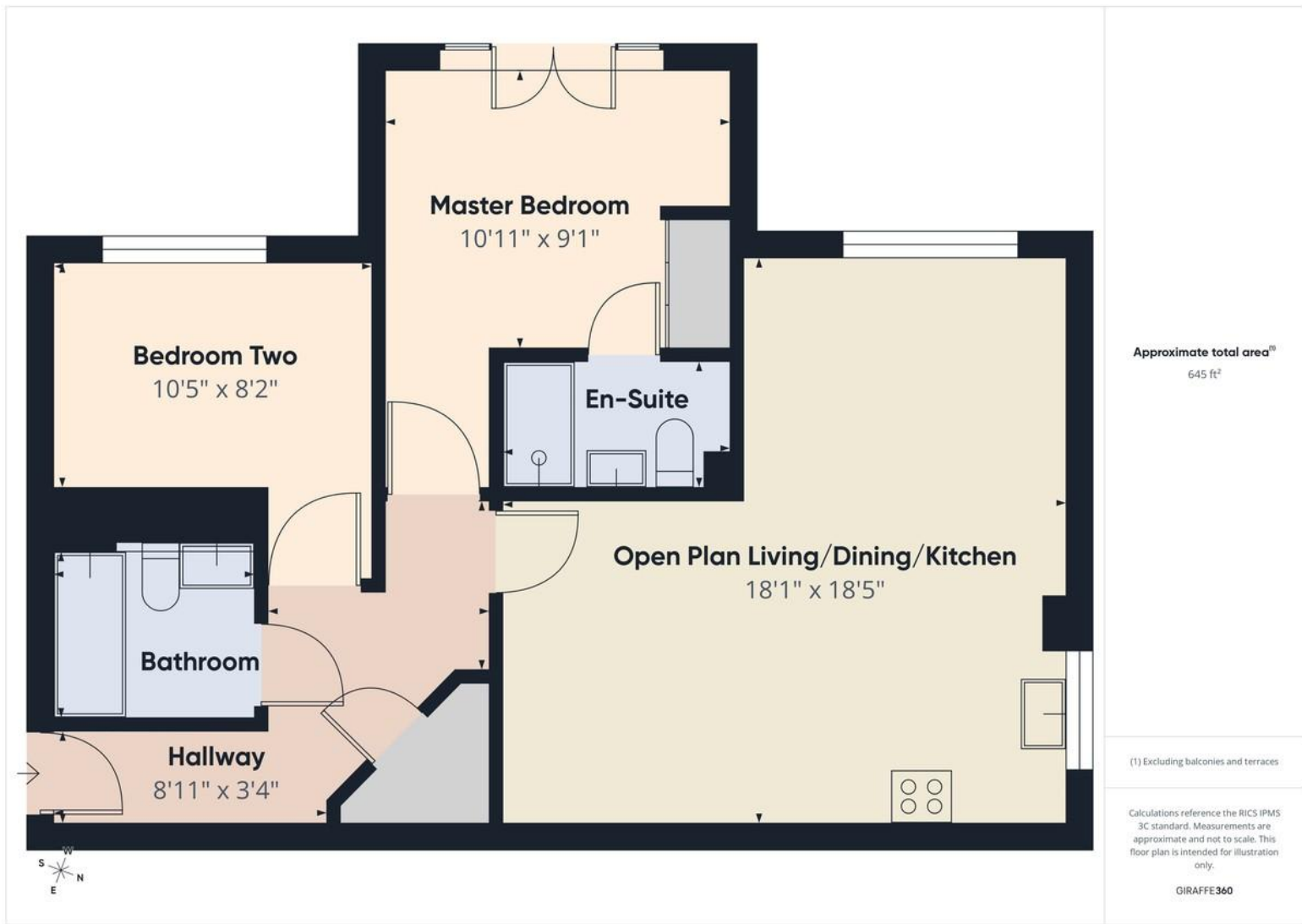
BATHROOM Comprising of a panelled bath with a chrome mixer tap and shower attachment over, low flush w.c., pedestal wash hand basin, vinyl floor covering, chrome heated towel rail, part wall tiling and ceiling light.

EXTERNAL The property stands within communal gardens and there is an allocated parking space.









Martin & Co Beeston

23 Wollaton Road • Beeston • Nottingham • NG9 2NG
T: 0115 9225555 • E: beeston@martinco.com

0115 9225555

<http://www.martinco.com>



Accuracy: References to the Tenure of a Property are based on information supplied by the Seller. The Agent has not had sight of the title documents. A Buyer is advised to obtain verification from their Solicitor. Items shown in photographs including but not limited to carpets, fixtures and fittings are not included unless specifically mentioned within the sales particulars. They may however be available by separate negotiation. Buyers must check the availability of any property and make an appointment to view before embarking on any journey to see a property. No person in the employment of the agent has any authority to make any representation about the property, and accordingly any information given is entirely without responsibility on the part of the agents, sellers(s) or lessors(s). Any property particulars are not an offer or contract, nor form part of one. **Sonic / Laser Tape:** Measurements taken using a sonic / laser tape measure may be subject to a small margin of error. **All Measurements:** All Measurements are Approximate. **Services Not tested:** The Agent has not tested any apparatus, equipment, fixtures and fittings or services and so cannot verify that they are in working order or fit for the purpose. A Buyer is advised to obtain verification from their Solicitor or Surveyor.