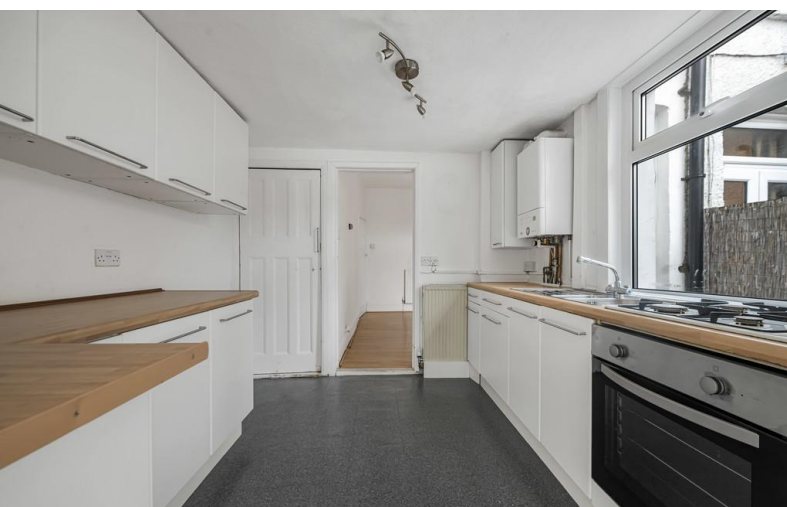


SOLD STC



Dalmally Road, Croydon

2 Bedrooms, 1 Bathroom, Mid Terraced House

Offers In Excess Of £400,000


MARTIN&CO



Two-Bedroom Home – Popular Location in Addiscombe – No Onward Chain

- 2 Bedroom House in Addiscombe
- Two Reception Rooms
- Conservatory
- Upstairs Family Bathrooms
- Modern Finish
- Desirable Road
- No Chain

%epcGraph_c_1_331%

Situated on one of Addiscombe's most desirable and well-connected roads, this beautifully presented two-bedroom residence offers spacious and modern living throughout.

The property boasts a large, contemporary kitchen, two spacious reception rooms. A bright and versatile conservatory extends the ground floor accommodation, providing an inviting area that overlooks the rear garden.

To the first floor, there are two generously sized bedrooms complemented by a modern family bathroom.

Additional benefits include off-road parking, gas central heating, and double glazing. The home is offered to the market with no onward chain, ensuring a smooth and straightforward purchase process.

Located within easy reach of local amenities, reputable schools, and excellent transport links, this property represents an ideal opportunity for first-time buyers, young families, or those seeking a well-appointed home in a highly regarded area.

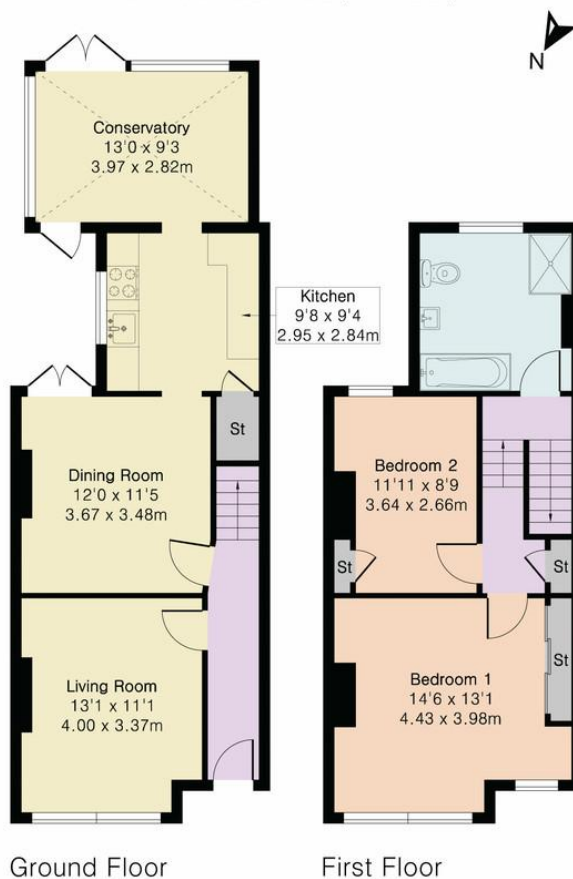
Early viewing is highly recommended.



Approximate Gross Internal Area 1032 sq ft - 96 sq m

Ground Floor Area 579 sq ft – 54 sq m

First Floor Area 453 sq ft – 42 sq m



Floor plan produced in accordance with RICS Property Measurement 2nd Edition. Although Pink Plan Ltd ensures the highest level of accuracy, measurements of doors, windows and rooms are approximate and no responsibility is taken for error, omission or misstatement. These plans are for representation purposes only and no guarantee is given on the total square footage of the property within this plan. The figure icon is for initial guidance only and should not be relied on as a basis of valuation.



Martin & Co Croydon

145 Brighton Road • • South Croydon • CR2 6EF
T: 0208 688 8565 • E: croydon@martinco.com

0208 688 8565

<http://www.martinco.com>



Accuracy: References to the Tenure of a Property are based on information supplied by the Seller. The Agent has not had sight of the title documents. A Buyer is advised to obtain verification from their Solicitor. Items shown in photographs including but not limited to carpets, fixtures and fittings are not included unless specifically mentioned within the sales particulars. They may however be available by separate negotiation. Buyers must check the availability of any property and make an appointment to view before embarking on any journey to see a property. No person in the employment of the agent has any authority to make any representation about the property, and accordingly any information given is entirely without responsibility on the part of the agents, sellers(s) or lessors(s). Any property particulars are not an offer or contract, nor for part of one. **Sonic / Laser Tape:** Measurements taken using a sonic / laser tape measure may be subject to a small margin of error. **All Measurements:** All Measurements are Approximate. **Services Not tested:** The Agent has not tested any apparatus, equipment, fixtures and fittings or services and so cannot verify that they are in working order or fit for the purpose. A Buyer is advised to obtain verification from their Solicitor or Surveyor.

