

**FOR SALE**



**Lismore Road, South Croydon**

**3 Bedrooms, 2 Bathroom, Split-Level Flat**

**Asking Price Of £450,000**



Don't miss this stunning bright and spacious three bedroom/two bathroom split level conversion flat, enjoying a popular South Croydon setting, just half a mile from South Croydon and Sanderstead Stations.

- **Split-Level Conversion Flat**
- **Large 16' Living Room**
- **3 Double Bedrooms**
- **2 'Bathrooms'**
- **Smart Fitted Kitchen**
- **Gas Heating**
- **10 Minutes to Stations**

Affording over 1000sqft (98sqm) of accommodation, arranged over the two upper floors of a handsome bay-fronted period property, the property comprises an entrance lobby with stairs to the first floor hallway, a 16' reception room with feature fireplace, a master bedroom also with feature fireplace, a modern shower-room/wc, a second floor landing, second double bedroom, a third smaller double bedroom and a modern bathroom/wc. Features to note include gas heating and double glazing. Externally the flat benefits from its own part of the garden at the rear.

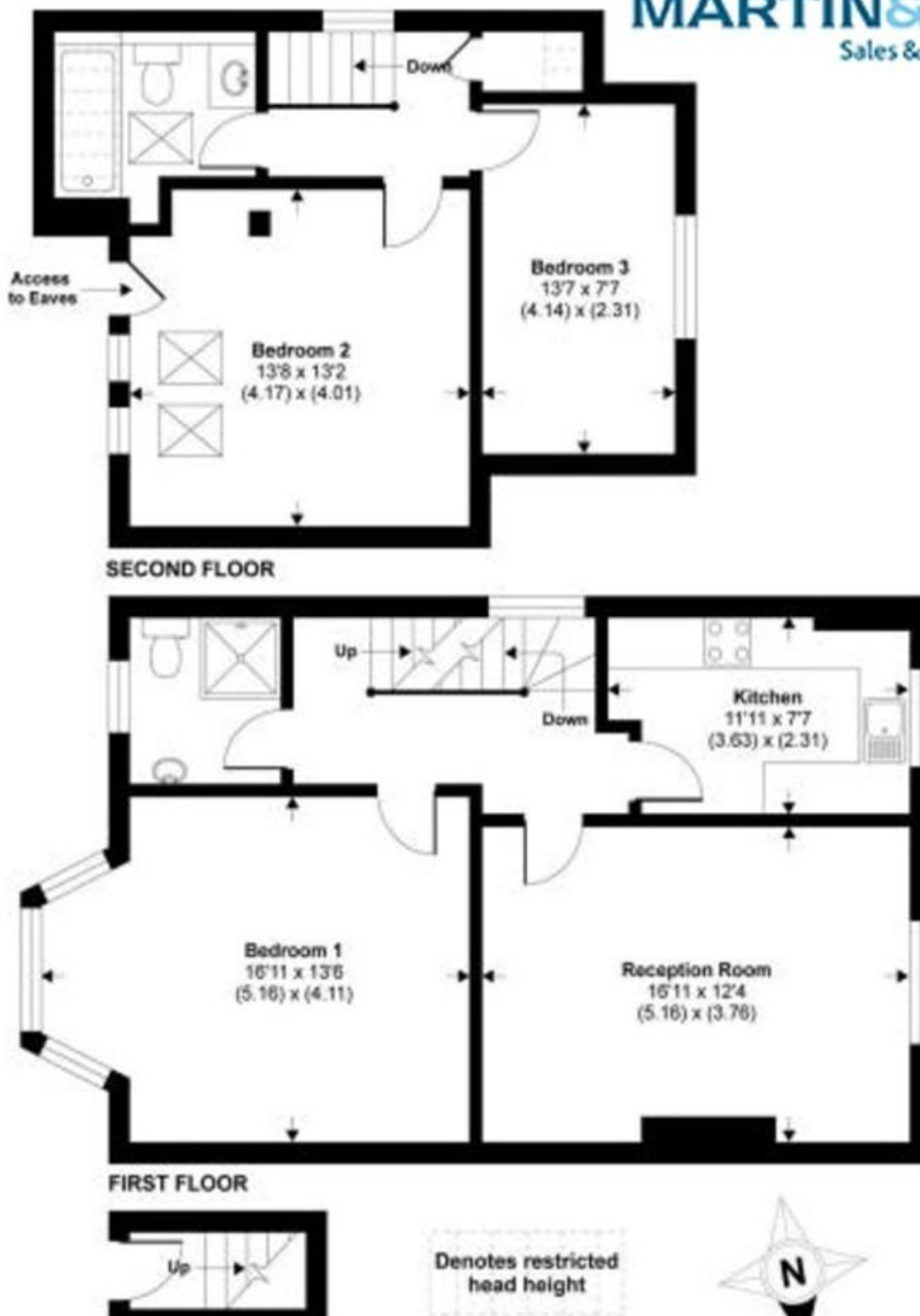
South Croydon and Sanderstead Stations are both within a 10-15 minute walk and there are regular bus services nearby. Parking in the road is currently unrestricted.

Available with no onward chain, you should call Martin & Co Croydon now for an appointment to view!

%epcGraph\_c\_1\_331%







## Martin & Co Croydon

145 Brighton Road • South Croydon • CR2 6EF  
T: 0208 688 8565 • E: croydon@martinco.com

**0208 688 8565**  
<http://www.martinco.com>



**Accuracy:** References to the Tenure of a Property are based on information supplied by the Seller. The Agent has not had sight of the title documents. A Buyer is advised to obtain verification from their Solicitor. Items shown in photographs including but not limited to carpets, fixtures and fittings are not included unless specifically mentioned within the sales particulars. They may however be available by separate negotiation. Buyers must check the availability of any property and make an appointment to view before embarking on any journey to see a property. No person in the employment of the agent has any authority to make any representation about the property, and accordingly any information given is entirely without responsibility on the part of the agents, sellers(s) or lessors(s). Any property particulars are not an offer or contract, nor for part of one. **Sonic / Laser Tape:** Measurements taken using a sonic / laser tape measure may be subject to a small margin of error. **All Measurements:** All Measurements are Approximate. **Services Not tested:** The Agent has not tested any apparatus, equipment, fixtures and fittings or services and so cannot verify that they are in working order or fit for the purpose. A Buyer is advised to obtain verification from their Solicitor or Surveyor.