

**FOR SALE**



**Ravenshead Close, Selsdon**  
**Asking Price Of £775,000**

**MARTIN&CO**



# Ravenshead Close, Selsdon

Asking Price Of £775,000

- Five Bedroom Detached House
- Three Reception Rooms
- Two Bathrooms
- Detached
- Large Sunny Garden

**FANTASTIC 5 BEDROOM  
DETACHED HOME !** In a quiet cul-de-sac, backing on Woodlands and Golf course this beautifully presented 5 bedroom 3 reception family home occupying a large but

Discover this rarely available gem tucked away in a quiet cul-de-sac. This impeccably maintained home is presented in excellent condition and offers a generous layout across multiple reception areas. With five spacious bedrooms, three beautifully appointed reception rooms, two modern bathrooms, and three separate water closets, the property delivers ample space and convenience for families or those who love to entertain.

The residence benefits from off-road parking and backs onto tranquil woodlands as well as a prestigious golf course, providing a serene and picturesque setting. Its superb location is further enhanced by close proximity to excellent state and private schools, local Sainsbury's for everyday



essentials, and just minutes away from the countryside- offering the perfect blend of convenience and peaceful retreat.

This exceptional property is truly a standout opportunity for those seeking a refined lifestyle in a prime location.



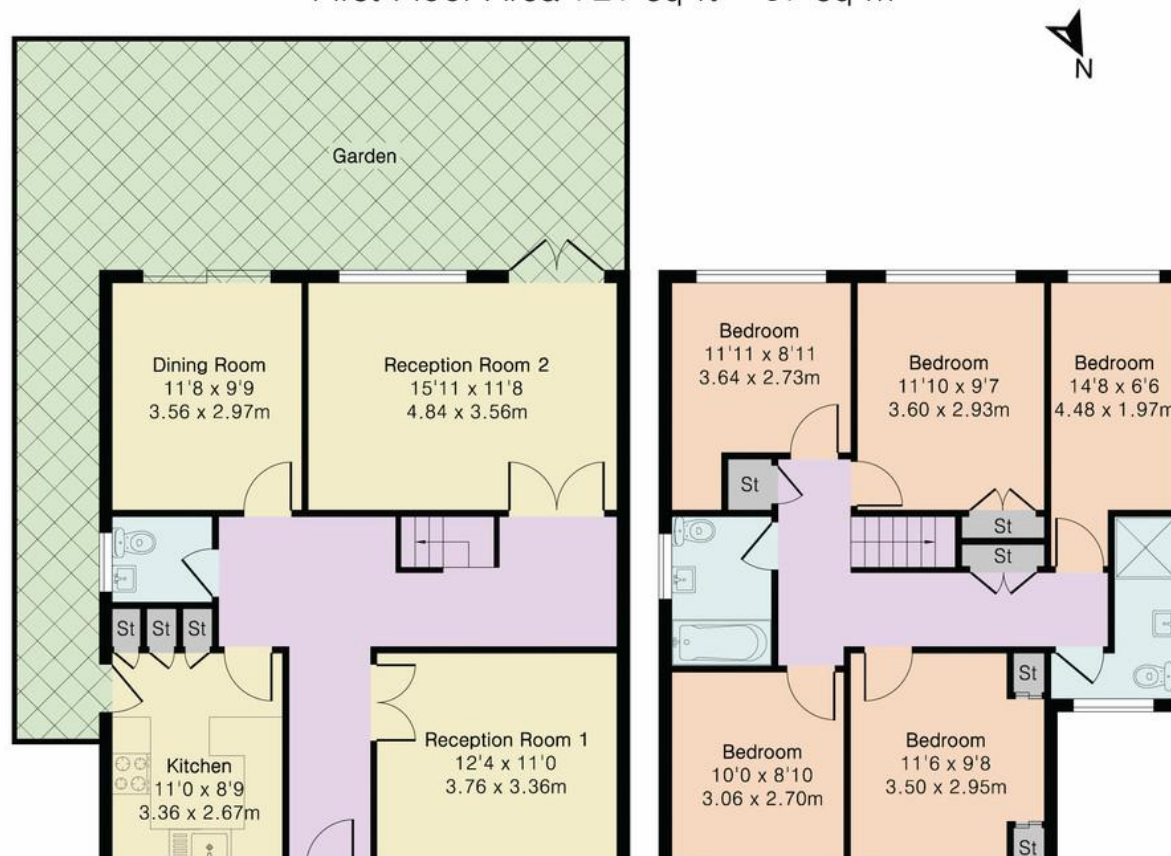
Score	Energy rating	Current	Potential
92+	A		
81-91	B		85 B
69-80	C		
55-68	D	67 D	
39-54	E		
21-38	F		
1-20	G		



**Approximate Gross Internal Area 1539 sq ft - 143 sq m**

Ground Floor Area 818 sq ft – 76 sq m

First Floor Area 721 sq ft – 67 sq m



## Martin & Co Croydon

145 Brighton Road • South Croydon • CR2 6EF  
T: 0208 688 8565 • E: [croydon@martinco.com](mailto:croydon@martinco.com)

**0208 688 8565**

<http://www.martinco.com>

**MARTIN&CO**

**Accuracy:** References to the Tenure of a Property are based on information supplied by the Seller. The Agent has not had sight of the title documents. A Buyer is advised to obtain verification from their Solicitor. Items shown in photographs including but not limited to carpets, fixtures and fittings are not included unless specifically mentioned within the sales particulars. They may however be available by separate negotiation. Buyers must check the availability of any property and make an appointment to view before embarking on any journey to see a property. No person in the employment of the agent has any authority to make any representation about the property, and accordingly any information given is entirely without responsibility on the part of the agents, sellers(s) or lessors(s). Any property particulars are not an offer or contract, nor form part of one. **Sonic / Laser Tape:** Measurements taken using a sonic / laser tape measure may be subject to a small margin of error. **All Measurements:** All Measurements are Approximate. **Services Not tested:** The Agent has not tested any apparatus, equipment, fixtures and fittings or services and so cannot verify that they are in working order or fit for the purpose. A Buyer is advised to obtain verification from their Solicitor or Surveyor. **Mortgage & Financial Advice:** The Martin & Co mortgage service is provided by London & Country Mortgages the UK's largest Independent Fee-Free mortgage broker of Beazer House, Lower Bristol Road, Bath, BA2 3BA. Authorised and regulated by the Financial Conduct Authority. Their FCA number is 143002. **YOUR HOME IS AT RISK IF YOU DO NOT KEEP UP REPAYMENTS ON A MORTGAGE OR OTHER LOANS SECURED ON IT.** Full written quotation available on request. A suitable life policy may be required. Loans subject to status. Minimum age 18. If you are making a cash offer, we shall require written confirmation of the source and availability of your funds in order that our client may make an informed decision.