

LET AGREED



Loxton Drive, Bath
£2,540 pcm

MARTIN&CO

Loxton Drive, Bath

Date available: 13th August 2026

Deposit: £2,930.76

Furnished

Council Tax band: B

- Student property
- Four newly refurbished bedrooms
- Living room
- New kitchen with dishwasher
- Bathroom and separate downstairs WC
- Bike store and on-street parking
- Courtyard garden

Energy Efficiency Rating

	Current	Potential
Very energy efficient - lower running costs		
(92+) A		
(81-91) B		85
(69-80) C		
(55-68) D	68	

FULLY BOOKED - NO MORE VIEWINGS AVAILABLE - Newly refurbished stunning four bedroom student property for the next academic year. Brand new kitchen with dishwasher, living room, refurbished bedrooms, bathroom, separate WC, garden and bike store.

Approximate Gross Internal Area
83.84 sq m / 902.44 sq ft

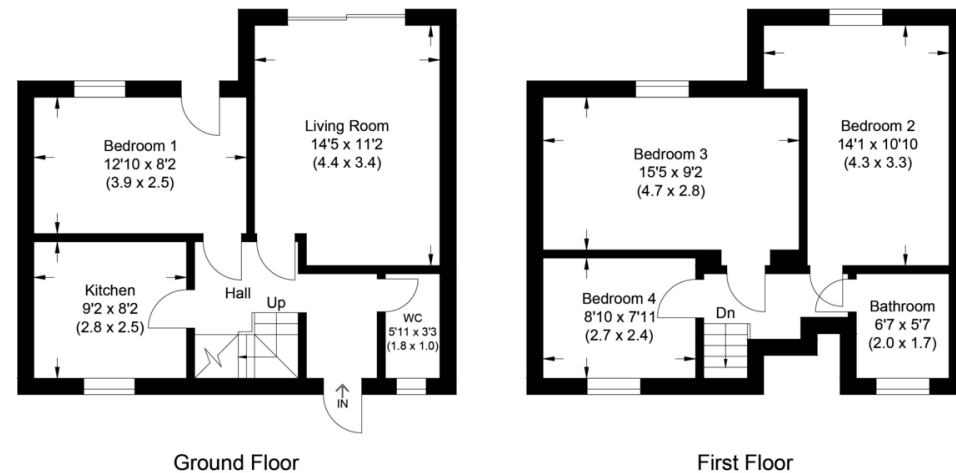


Illustration for identification purposes only, measurements are approximate, not to scale.

Produced By www.myphotogenie.co.uk

Martin & Co Bath

1 Cleveland Terrace • Bath • BA1 5DF

T: 01225 429999 • E: bath@martinco.com

01225 429999

<http://www.martinco.com>

MARTIN&CO

Accuracy: References to the Tenure of a Property are based on information supplied by the Seller. The Agent has not had sight of the title documents. A Buyer is advised to obtain verification from their Solicitor. Items shown in photographs including but not limited to carpets, fixtures and fittings are not included unless specifically mentioned within the sales particulars. They may however be available by separate negotiation. Buyers must check the availability of any property and make an appointment to view before embarking on any journey to see a property. No person in the employment of the agent has any authority to make any representation about the property, and accordingly any information given is entirely without responsibility on the part of the agents, sellers(s) or lessors(s). Any property particulars are not an offer or contract, nor form part of one. **Sonic / Laser Tape:** Measurements taken using a sonic / laser tape measure may be subject to a small margin of error. **All Measurements:** All Measurements are Approximate. **Services Not tested:** The Agent has not tested any apparatus, equipment, fixtures and fittings or services and so cannot verify that they are in working order or fit for the purpose. A Buyer is advised to obtain verification from their Solicitor or Surveyor.