

TO LET



Dilke Street, Hanley

3 Bedrooms, 1 Bathroom, Semi-Detached House

£900 pcm



Dilke Street, Hanley

3 Bedrooms, 1 Bathroom

£900 pcm

CLOSE TO LOCAL AMENITIES. Martin & Co are delighted to present this lovely 3 bed semi detached property located in a sought after area close to Hanley town centre. The property comprises of spacious lounge and kitchen to the ground floor and 3 good sized bedrooms and a bathroom to the first floor. The property benefits from a good size rear garden and is within walking distance from the town centre and a comprehensive range of many shops.

Date available: 2nd May 2026

Deposit: £1,038

Unfurnished

Council Tax band: A

- Close to Local Amenities
- Semi-Detached
- Garden to rear
- Spacious Lounge
- Large Kitchen
- 3 Bedrooms
- 10 minute walk from Hanley centre



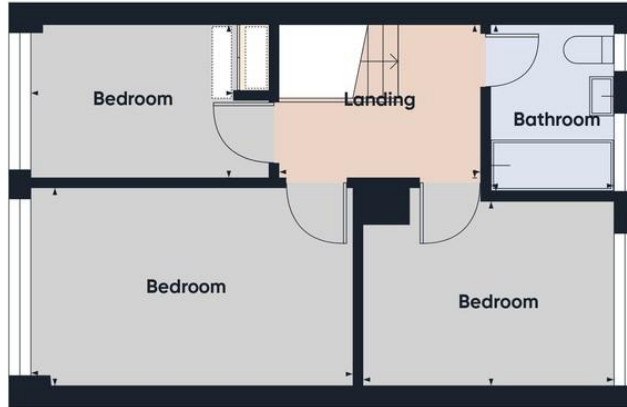




Score	Energy rating	Current	Potential
92+	A		
81-91	B		87 B
69-80	C	71 C	
55-68	D		
39-54	E		
21-38	F		



Ground Floor



Floor 1



Approximate total area⁽¹⁾
 741 ft²
 68.8 m²

Reduced headroom
 4 ft²
 0.4 m²

(1) Excluding balconies and terraces

Reduced headroom
 ----- Below 5 ft/1.5 m

Calculations reference the RICS IPMS 3C standard. Measurements are approximate and not to scale. This floor plan is intended for illustration only.

GIRAFFE360

Martin & Co Stoke on Trent

12 Albion Street • Stoke-On-Trent • ST1 1QH

T: 01782 262880 • E: stokeontrent@martinco.com <http://www.martinco.com>

01782 262880



Accuracy: References to the Tenure of a Property are based on information supplied by the Seller. The Agent has not had sight of the title documents. A Buyer is advised to obtain verification from their Solicitor. Items shown in photographs including but not limited to carpets, fixtures and fittings are not included unless specifically mentioned within the sales particulars. They may however be available by separate negotiation. Buyers must check the availability of any property and make an appointment to view before embarking on any journey to see a property. No person in the employment of the agent has any authority to make any representation about the property, and accordingly any information given is entirely without responsibility on the part of the agents, sellers(s) or lessors(s). Any property particulars are not an offer or contract, nor for part of one. **Sonic / laser Tape:** Measurements taken using a sonic / laser tape measure may be subject to a small margin of error. **All Measurements:** All Measurements are Approximate. **Services Not tested:** The Agent has not tested any apparatus, equipment, fixtures and fittings or services and so cannot verify that they are in working order or fit for the purpose. A Buyer is advised to obtain verification from their Solicitor or Surveyor.