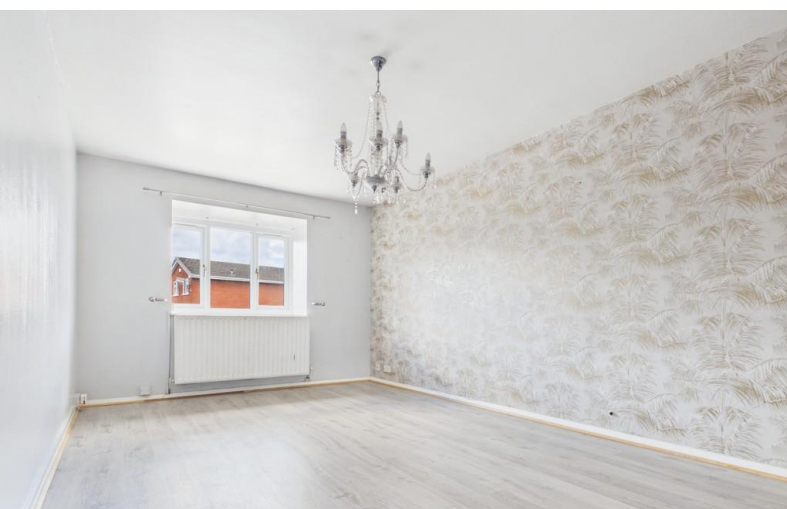


**TO LET**



**Diana Road, Birches Head**

**2 Bedrooms, 1 Bathroom, Apartment**

**£800 pcm**



## Diana Road, Birches Head

Apartment,  
2 bedroom, 1 bathroom

£800 pcm

Date available: 9th May 2026

Deposit: £923

Unfurnished

Council Tax band: A

- First floor flat
- Large kitchen
- Lounge
- 2 large Bedrooms
- Bathroom
- Sought after location
- Close to Hanley town centre

LARGE 2 BEDROOM FLAT. Martin and co are delighted to offer for rent this large 2 bedroom flat located in the highly sought after area of birches head which is a short drive from Hanley town centre. The property which is on the first floor above a small parade of shops comprises a private front door, entrance hall, lounge, separate kitchen, 2 double bedrooms and a bathroom. To the outside there is a garden area. Please note the water bill is included in the rent.

Score	Energy rating	Current	Potential
92+	A		
81-91	B		
69-80	C		74 C
55-68	D	65 D	
39-54	E		
21-38	F		
1-20	G		





## Martin & Co Stoke on Trent

12 Albion Street • Stoke-On-Trent • ST1 1QH

T: 01782 262880 • E: [stokeontrent@martinco.com](mailto:stokeontrent@martinco.com) <http://www.martinco.com>

# 01782 262880



**Accuracy:** References to the Tenure of a Property are based on information supplied by the Seller. The Agent has not had sight of the title documents. A Buyer is advised to obtain verification from their Solicitor. Items shown in photographs including but not limited to carpets, fixtures and fittings are not included unless specifically mentioned within the sales particulars. They may however be available by separate negotiation. Buyers must check the availability of any property and make an appointment to view before embarking on any journey to see a property. No person in the employment of the agent has any authority to make any representation about the property, and accordingly any information given is entirely without responsibility on the part of the agents, sellers(s) or lessors(s). Any property particulars are not an offer or contract, nor for m part of one. **Sonic / laser Tape:** Measurements taken using a sonic / laser tape measure may be subject to a small margin of error. **All Measurements:** All Measurements are Approximate. **Services Not tested:** The Agent has not tested any apparatus, equipment, fixtures and fittings or services and so cannot verify that they are in working order or fit for the purpose. A Buyer is advised to obtain verification from their Solicitor or Surveyor.