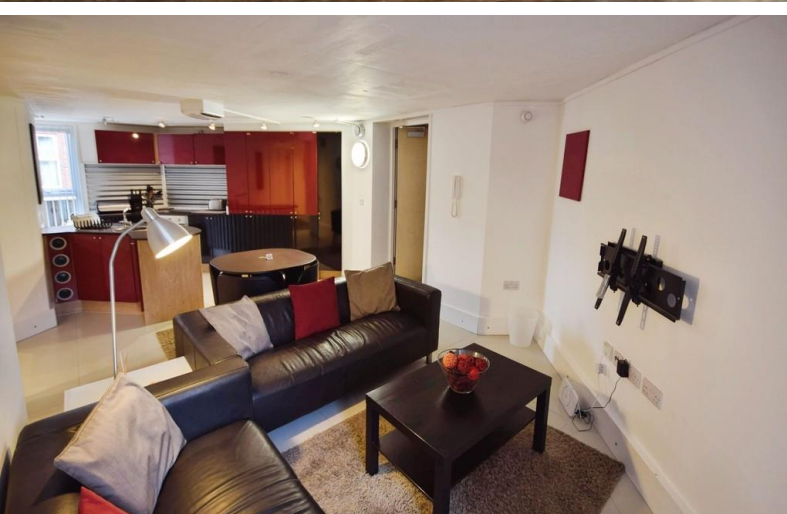


**TO LET**



**Forest Edge, Sneyd Street**

**2 Bedrooms, 1 Bathroom, Apartment**

**£825 pcm**





## Forest Edge, Sneyd Street

Apartment,  
2 bedroom, 1 bathroom

£825 pcm

Date available: Available Now

Deposit: £951

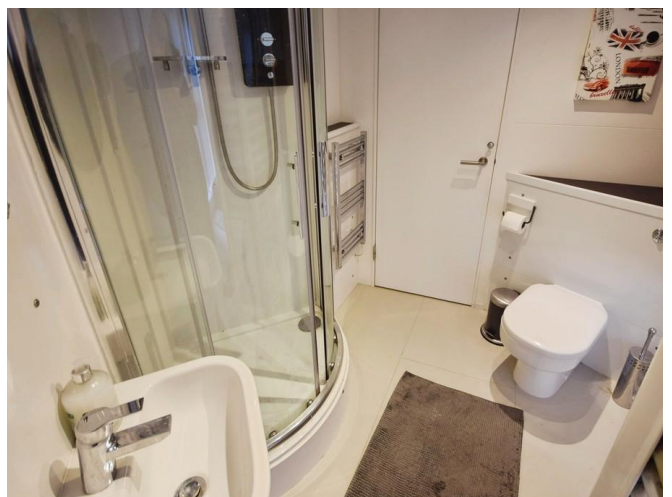
Furnished

Council Tax band: A

- Furnished 2 bedroom Flat
- Open plan lounge kitchen
- 2 Ensuite shower rooms
- Lift in block
- Parking
- Walking distance from Hanley centre
- Close to Festival Park

**STUNNING TWO BEDROOM FURNISHED APARTMENT.** Martin and co are delighted to offer for rent this superb two double bedroom furnished apartment located in a sought after area within a short distance from both Hanley town centre and Festival park. The property is in superb order throughout and comprises an open plan lounge kitchen area and 2 double bedrooms both with en suite shower rooms. The block benefits from a lift and allocated parking.

Energy Efficiency Rating		
	Current	Potential
Very energy efficient - lower running costs		
(92-100) <b>A</b>		
(81-91) <b>B</b>		
(69-80) <b>C</b>	72	79
(55-68) <b>D</b>		
(39-54) <b>E</b>		



---

## Martin & Co Stoke on Trent

12 Albion Street • Stoke-On-Trent • ST1 1QH

T: 01782 262880 • E: [stokeontrent@martinco.com](mailto:stokeontrent@martinco.com) <http://www.martinco.com>

# 01782 262880



**Accuracy:** References to the Tenure of a Property are based on information supplied by the Seller. The Agent has not had sight of the title documents. A Buyer is advised to obtain verification from their Solicitor. Items shown in photographs including but not limited to carpets, fixtures and fittings are not included unless specifically mentioned within the sales particulars. They may however be available by separate negotiation. Buyers must check the availability of any property and make an appointment to view before embarking on any journey to see a property. No person in the employment of the agent has any authority to make any representation about the property, and accordingly any information given is entirely without responsibility on the part of the agents, sellers(s) or lessors(s). Any property particulars are not an offer or contract, nor for m part of one. **Sonic / laser Tape:** Measurements taken using a sonic / laser tape measure may be subject to a small margin of error. **All Measurements:** All Measurements are Approximate. **Services Not tested:** The Agent has not tested any apparatus, equipment, fixtures and fittings or services and so cannot verify that they are in working order or fit for the purpose. A Buyer is advised to obtain verification from their Solicitor or Surveyor.