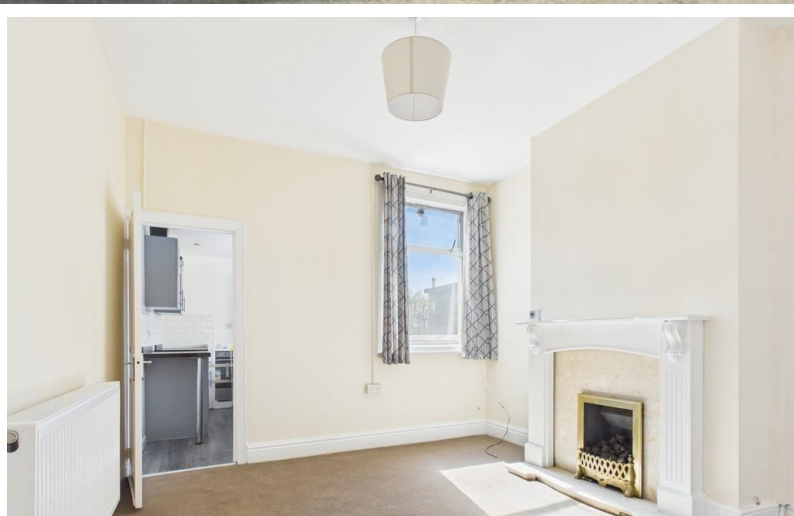


TO LET



Ashworth Street, Fenton

2 Bedrooms, 1 Bathroom, End Terraced House

£700 pcm



Ashworth Street, Fenton

2 Bedrooms, 1 Bathroom

£700 pcm

END TERRACE HOUSE WITH GARAGE. Martin and Co are delighted to offer for rent this well presented 2 bedroom end terraced house located in a sought after area within a short distance of Hanley town centre. The property has the benefit of a garage to the rear and comprises of the following: To the ground floor 2 reception rooms, kitchen and bathroom and to the first floor 2 double bedrooms.

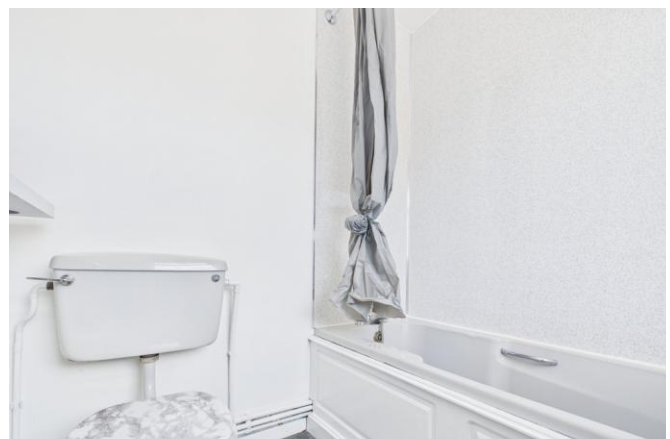
Date available: Available Now

Deposit: £807

Unfurnished

Council Tax band: A

- 2 Bed End Terrace
- 2 Reception Rooms
- Kitchen
- Bathroom
- Garage to Rear
- Close to Hanley Town Centre
- Council Tax Band = A





Score	Energy rating	Current	Potential
92+	A		
81-91	B		83 B
69-80	C		
55-68	D	57 D	
39-54	E		
21-38	F		



Martin & Co Stoke on Trent

12 Albion Street • Stoke-On-Trent • ST1 1QH

T: 01782 262880 • E: stokeontrent@martinco.com <http://www.martinco.com>

01782 262880



Accuracy: References to the Tenure of a Property are based on information supplied by the Seller. The Agent has not had sight of the title documents. A Buyer is advised to obtain verification from their Solicitor. Items shown in photographs including but not limited to carpets, fixtures and fittings are not included unless specifically mentioned within the sales particulars. They may however be available by separate negotiation. Buyers must check the availability of any property and make an appointment to view before embarking on any journey to see a property. No person in the employment of the agent has any authority to make any representation about the property, and accordingly any information given is entirely without responsibility on the part of the agents, sellers(s) or lessors(s). Any property particulars are not an offer or contract, nor for part of one. **Sonic / laser Tape:** Measurements taken using a sonic / laser tape measure may be subject to a small margin of error. **All Measurements:** All Measurements are Approximate. **Services Not tested:** The Agent has not tested any apparatus, equipment, fixtures and fittings or services and so cannot verify that they are in working order or fit for the purpose. A Buyer is advised to obtain verification from their Solicitor or Surveyor.