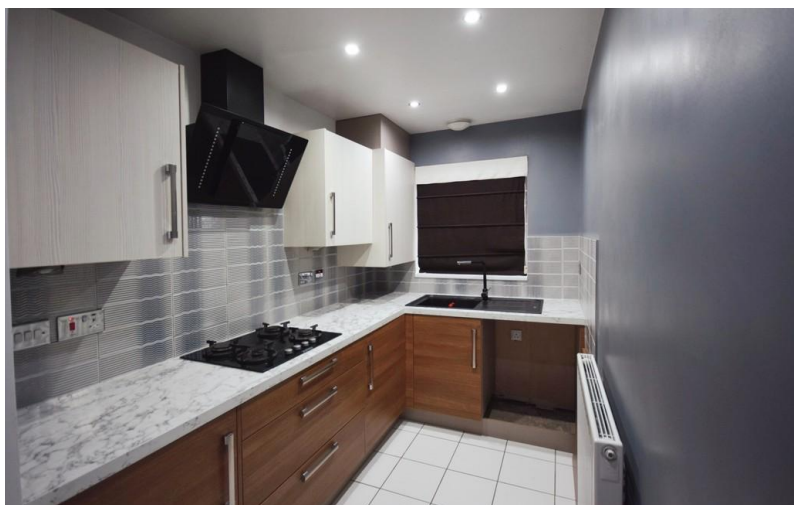
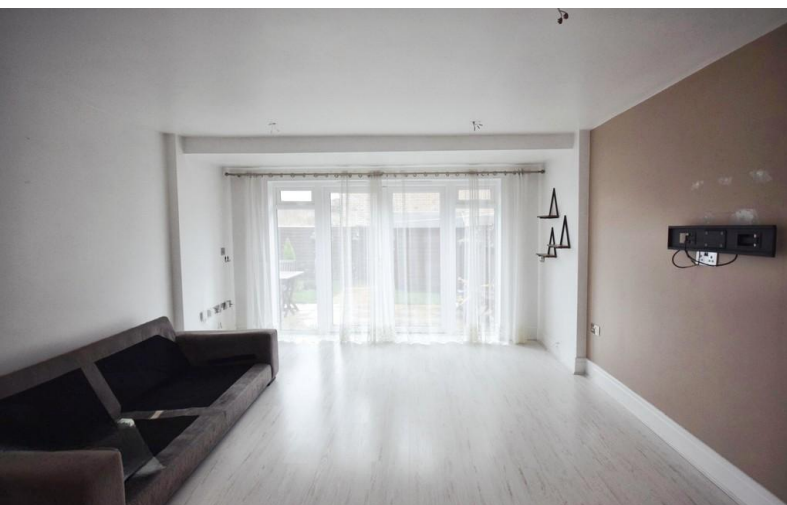


TO LET



Norville Drive, Hanley

4 Bedrooms, 2 Bathroom, Town House

£1,200 pcm



Norville Drive, Hanley

Town House,
4 bedroom, 2 bathroom

£1,200 pcm

Date available: 3rd March 2025

Deposit: £1,384

Unfurnished

Council Tax band: C

- Modern Property
- Three Story House
- 4 Double Bedrooms
- Wonderful Fixtures and Fittings
- Bathroom on Every Floor
- Assigned Parking Space
- Council Tax Band C

THREE STOREY TOWNHOUSE!

Martin & Co Proudly present a wonderfully designed 4 bedroom, three storey townhouse which has some tasteful fixtures and fittings. The ground floor of the property boasts a large open plan kitchen and lounge as well as a washroom . To the first floor there are two double bedrooms and the family bathroom. And the second floor hosts a further two double bedrooms one of which being the master that has an en suite bathroom and a balcony.

The property also has lovely, large rear garden and has an assigned car parking space.

Energy Efficiency Rating		
	Current	Potential
<i>Very energy efficient - lower running costs</i>		
(92+) A		94
(81-91) B	84	
(69-80) C		
(55-68) D		
(39-54) E		
(21-38) F		



Martin & Co Stoke on Trent

12 Albion Street • Stoke-On-Trent • ST1 1QH

T: 01782 262880 • E: stokeontrent@martinco.com <http://www.martinco.com>

01782 262880



Accuracy: References to the Tenure of a Property are based on information supplied by the Seller. The Agent has not had sight of the title documents. A Buyer is advised to obtain verification from their Solicitor. Items shown in photographs including but not limited to carpets, fixtures and fittings are not included unless specifically mentioned within the sales particulars. They may however be available by separate negotiation. Buyers must check the availability of any property and make an appointment to view before embarking on any journey to see a property. No person in the employment of the agent has any authority to make any representation about the property, and accordingly any information given is entirely without responsibility on the part of the agents, sellers(s) or lessors(s). Any property particulars are not an offer or contract, nor for part of one. **Sonic / laser Tape:** Measurements taken using a sonic / laser tape measure may be subject to a small margin of error. **All Measurements:** All Measurements are Approximate. **Services Not tested:** The Agent has not tested any apparatus, equipment, fixtures and fittings or services and so cannot verify that they are in working order or fit for the purpose. A Buyer is advised to obtain verification from their Solicitor or Surveyor.