

ON HOLD



Tudor Court, Sunny Bank, Stoke-on-Trent

2 Bedrooms, 1 Bathroom, Apartment

£72,500



ENTRANCE HALL Intercom entry system

LOUNGE 14' 9" x 9' 8" (4.5m x 2.95m) Having patio doors opening onto the balcony, radiator

KITCHEN 9' 0" x 7' 4" (2.74m x 2.24m) Open plan design and fitted with a range of wall and base units with complementary worksurface over which incorporates a stainless steel sink unit and drainer, integrated oven and hob, space for appliances, housing gas boiler, double glazed window, built in storage cupboard.

BEDROOM 12' 4" x 8' 8" (3.76m x 2.64m) Double glazed window, radiator.

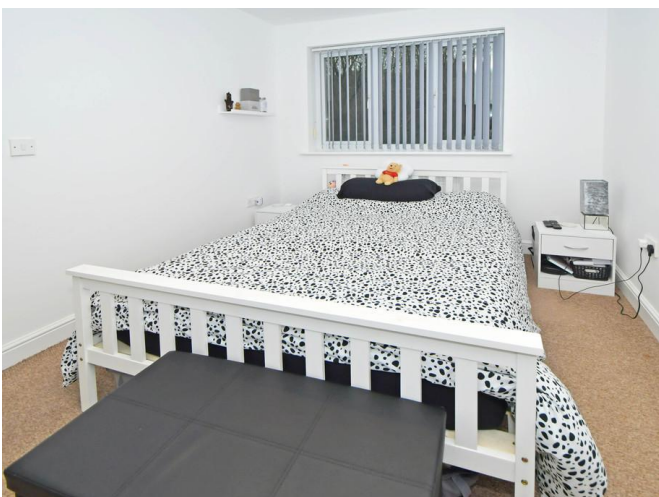
BEDROOM 6' 9" x 6' 9" (2.06m x 2.06m) Double glazed window, radiator.

BATHROOM Modern white suite comprising; low level WC, pedestal hand wash basin and shower unit, radiator.

EXTERNAL Allocated parking.

- Pre Let Investment Opportunity
- Modern Apartment
- Two Bedrooms
- Allocated Parking Space
- Council Tax Band A
- Tenure Leasehold
- EPC C

Energy Efficiency Rating		
	Current	Potential
Very energy efficient - lower running costs		
(92+) A		
(81-91) B		
(69-80) C	80	80
(55-68) D		
(39-54) E		
(21-38) F		





Ground Floor

All measurements are approximate and for display purposes only

Martin & Co Stoke on Trent

12 Albion Street • Stoke-On-Trent • ST1 1QH

T: 01782 262880 • E: stokeontrent@martinco.com

01782 262880

<http://www.martinco.com>



Accuracy: References to the Tenure of a Property are based on information supplied by the Seller. The Agent has not had sight of the title documents. A Buyer is advised to obtain verification from their Solicitor. Items shown in photographs including but not limited to carpets, fixtures and fittings are not included unless specifically mentioned within the sales particulars. They may however be available by separate negotiation. Buyers must check the availability of any property and make an appointment to view before embarking on any journey to see a property. No person in the employment of the agent has any authority to make any representation about the property, and accordingly any information given is entirely without responsibility on the part of the agents, sellers(s) or lessors(s). Any property particulars are not an offer or contract, nor for part of one. **Sonic / laser Tape:** Measurements taken using a sonic / laser tape measure may be subject to a small margin of error. **All Measurements:** All Measurements are Approximate. **Services Not tested:** The Agent has not tested any apparatus, equipment, fixtures and fittings or services and so cannot verify that they are in working order or fit for the purpose. A Buyer is advised to obtain verification from their Solicitor or Surveyor.